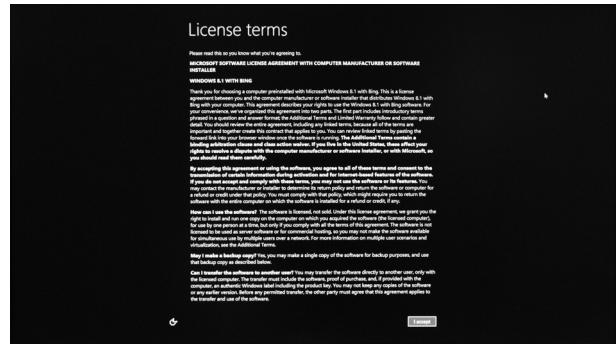


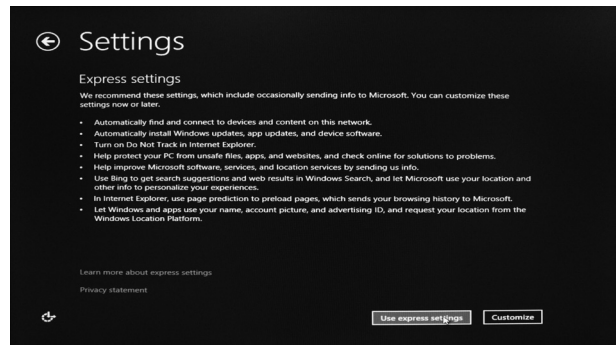
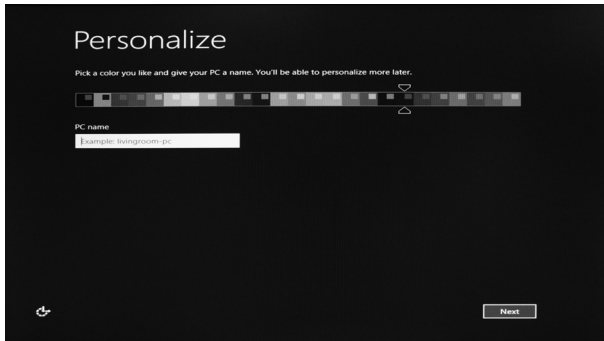
# Getting started with Windows 8.1 with Bing

Please follow the steps below to begin using your ZBOX with Windows 8.1 with Bing.

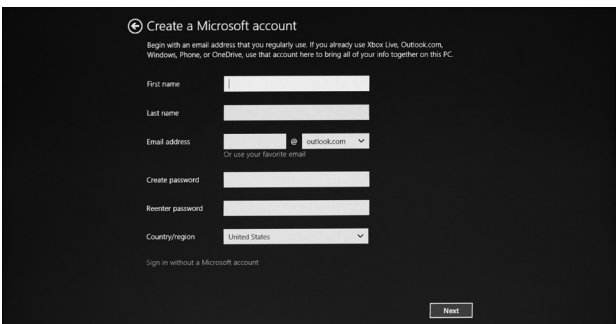
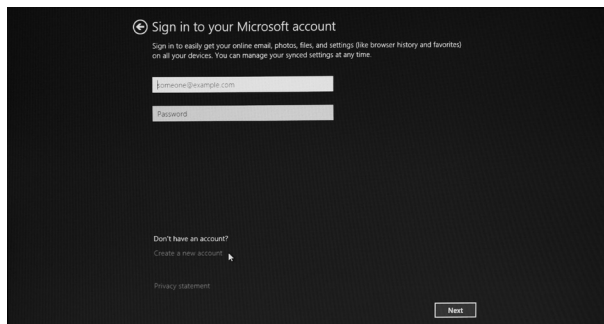
1. Power on the system.
2. Connect to the Internet via Ethernet or Wi-Fi.
3. Select the Region and language.
4. Read the license terms.



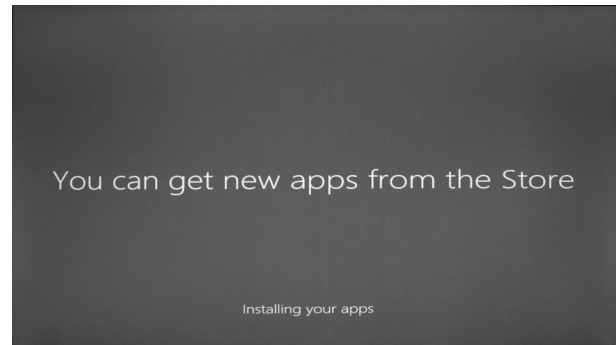
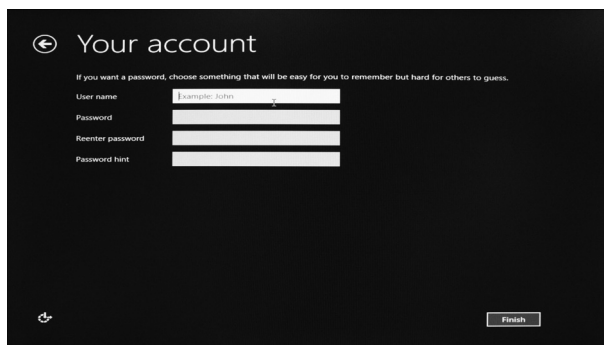
5. Pick a color you like and give your PC a name.
6. We recommend using the express settings.



7. Create a Microsoft new account if you don't have one or select "Sign in without a Microsoft account" and click next.

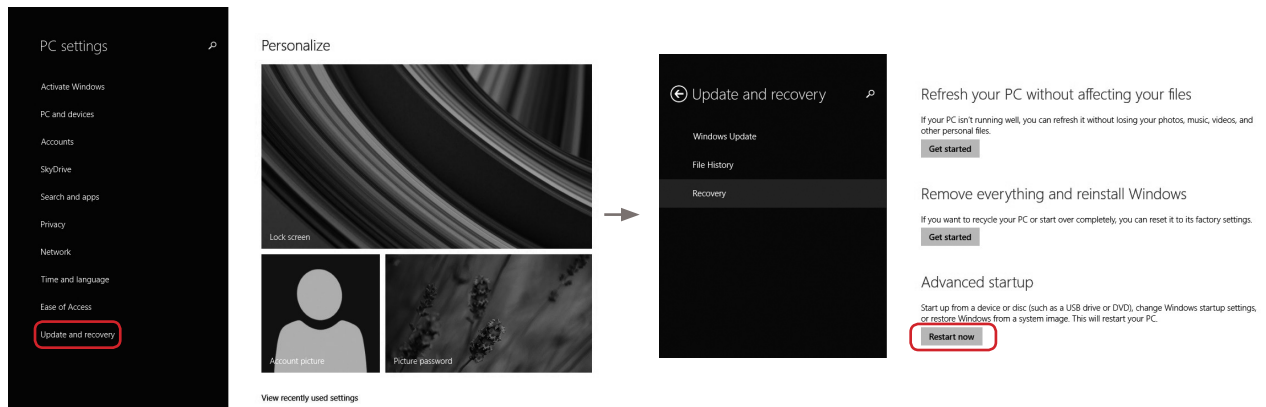


8. Setup your account.
9. Wait for the initial system setup to complete .

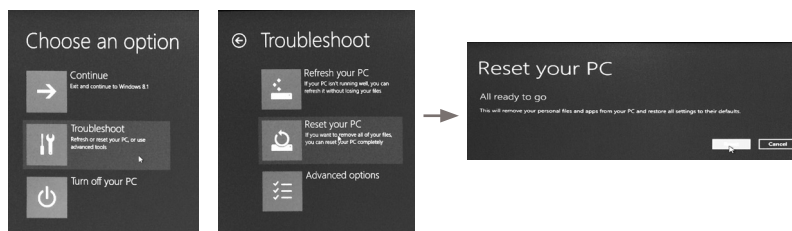


## Recovering Windows 8.1 (from internal system image)

1. Select "PC settings" > "Update and recovery" > "Recovery" > "Restart now".



2. Choose "Troubleshoot" > "Reset your PC" > "Reset".



## Recovering Windows 8.1 (from external recovery DVD)

1. Please back up your personal files before attempting recovery.
2. Boot from recovery DVD.
3. Follow the on-screen instructions to finish the recovery.