

# USER'S MANUAL

EMBEDDED  
**SOLUTIONS**

---

# **ZP-PI336**

## **User's Manual**



No part of this manual, including the products and software described in it, may be reproduced, transmitted, transcribed, stored in a retrieval system, or translated into any language in any form or by any means, except by the purchaser for backup purposes, without the express written permission of ZOTAC.

Products and corporate names mentioned in this manual may be registered trademarks or copyrights of their respective companies, and are used for identification purposes only. All trademarks are the property of their respective owners.

Every effort has been made to ensure the contents of this manual are correct and up to date. However, the manufacturer makes no guarantee regarding the accuracy of its contents, and reserves the right to make changes without prior notice.

---

## Table of Contents

|                                 |           |
|---------------------------------|-----------|
| <b>Specifications</b>           | <b>3</b>  |
| <b>Safety instructions</b>      | <b>5</b>  |
| <b>Package contents</b>         | <b>6</b>  |
| <b>Port layout</b>              | <b>7</b>  |
| <b>Using your ZP-PI336</b>      | <b>9</b>  |
| Configuring wireless connection | 9         |
| Configuring audio output        | 9         |
| <b>Watch Dog Timer function</b> | <b>10</b> |

---

## Specifications

### Microprocessor Support

### Onboard Graphics Support

### Memory

### USB Ports

### Audio

### Storage

### Network

### WiFi Support

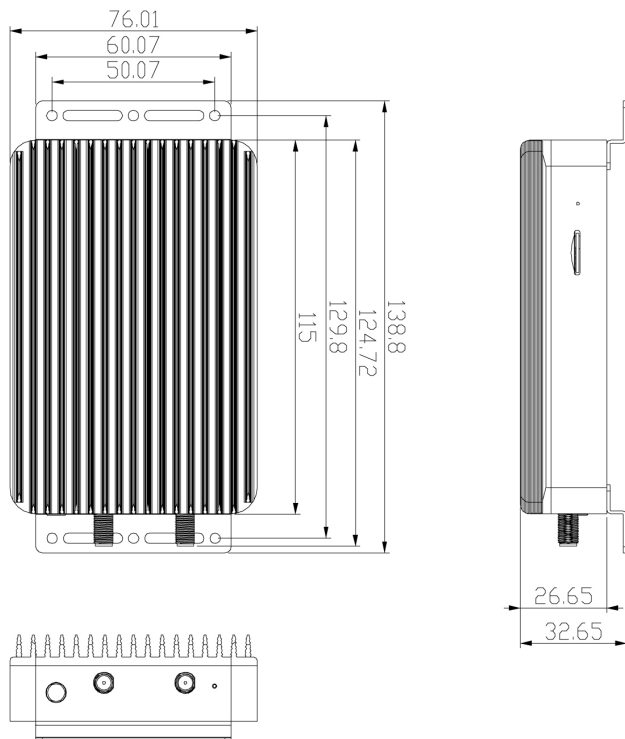
### Operating Systems

### H/W watchdog timer

### Case Dimension

- Intel Celeron N6211 (1.2GHz/3.0GHz, 1.5MB cache)
- Integrated Intel UHD Graphics for 10th Gen Intel Processors
- HDMI 2.0 (max resolution: 4096x2160 @60Hz)
- DP 1.2 (max resolution: 4096x2160 @60Hz)
- Onboard 4GB/8GB LPDDR4X
- 2x USB 3.1 Type-A ports
- 1x USB 3.1 Type-C port
- 1x 3.5mm stereo out & microphone combo
- Onboard 128 GB eMMC 5.1
- MicroSD/microSDHC/microSDXC card reader slot
- 1x Gigabit Ethernet LAN
- Supports Wake-on-LAN
- WIFI 6E, IEEE 802.11 a/b/g/n/ac/ax
- Bluetooth 5.2
- Supports Windows 11, Windows 10, Windows 10 IoT ENT LTSC and Ubuntu 20.04 LTS Linux
- Timeout value = 0 ~ 65,535. Unit: minute/second
- 115.0mm x 76.0mm x 26.7mm





---

## Safety instructions

ZP-PI336 is designed and tested to meet the latest standards of safety for information technology equipment. However, to ensure your safety, it is important that you read the following safety instructions.

- ❖ Read and follow all instructions in the documentation before you operate your system.
- ❖ Do not use this product near water or a heat source such as a radiator.
- ❖ Set up the system on a stable surface with the provided stand. Never use the system alone without the stand.
- ❖ Openings on the chassis are for ventilation. Do not block or cover these openings.
- ❖ Make sure you leave plenty of space around the system for ventilation. Never insert objects of any kind into the ventilation openings.
- ❖ Use this product in environments with ambient temperature on below conditions:  
Main unit: -20°C - +45°C  
AC adapter: +0°C ~ +40°C
- ❖ This device can only be replaced and work with a power supply with an output voltage of DC 5V, the current rating should be greater than or equal to 4A, and a power supply that meets the local national safety act.
- ❖ Do not walk on the power cord or allow anything to rest on it.
- ❖ Do not spill water or any other liquids on your system.
- ❖ When the system is turned off, a small amount of electrical current still flows. Always unplug all power, modem, and network cables from the power outlets before cleaning the system.
- ❖ If you encounter the following technical problems with the product, unplug the power cord and contact a qualified service technician or your retailer.
  - The power cord or plug is damaged.
  - Liquid has been spilled into the system.
  - The system does not function properly even if you follow the operating instructions.
  - The system was dropped or the cabinet is damaged.
  - The system performance changes.

---

## Package contents

Thank you for choosing our ZP-PI336. The following illustration displays the package contents of your new ZP-PI336. If any of the below items are damaged or missed, contact your retailer.

- 1 x ZP-PI336
- 1 x L-shaped mounting kit
- 2 x Mounting screws
- 1 x AC Adapter
- 1 x CTIA<=>OMTP adapter
- 1 x USB flash drive
- 1 x User Manual (soft copy)

---

## Port layout



### 1. USB 3.1 Type-C port

The USB 3.1 type-C port supports the SuperSpeed USB 3.1 devices. Use this port for USB 3.1 devices for maximum performance with USB 3.1 compatible devices.

### 2. DisplayPort

DisplayPort supports external connection up to DP1.2, max resolution 4096x2160 @60Hz.

### 3. HDMI port

The HDMI (High Definition Multimedia Interface) port supports with HDMI2.0, max resolution 4096x2160 @60Hz.

### 4. Combo Headphone/Microphone jack (3.5mm)

The combo headphone/microphone jack (3.5mm) is used to connect the system's audio out signal to amplified speakers, 3-pole headphones or 4-pole OMTP headphones.

Note: The combo headphone/microphone jack does not support the traditional microphone.

### 5. Ethernet port

The eight-pin RJ-45 LAN port supports standard Ethernet cable for connection to a local network.

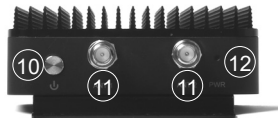
### 6. MicroSD memory card slot

The built-in memory card reader supports Micro SDHC/SDXC cards to expand the storage capabilities of the ZP-PI336.

---

## 7. Clear CMOS hole

Insert a pin into the Clear CMOS hole for 3 seconds to clear CMOS.



## 8. Power input (DC 5V, >=4A)

The supplied power adapter converts AC power to DC power for use with this jack. Power supplied through this jack supplies power to the mini-PC. To prevent damage to the mini-PC, always use the supplied power adapter.

## 9. USB 3.1 ports

The USB 3.1 port supports SuperSpeed USB 3.1 devices and is backwards compatible with USB 3.0/2.0/1.1 devices. Use this port for USB 3.1 devices for maximum performance with USB 3.1 compatible devices.

## 10. Power button

The power button turns the system ON and OFF.

## 11. WiFi antenna connectors

The WiFi antenna connector supports the included WiFi antenna.

## 12. LED indicator

Yellow-Green = ON, Red = Standby.

*Note 1: The power adapter may get warm or hot when in use. Do not cover the adapter and keep it away from your body.*

*Note 2: Due to the unique design, some connectors are placed upside down.*

## Using your ZP-PI336

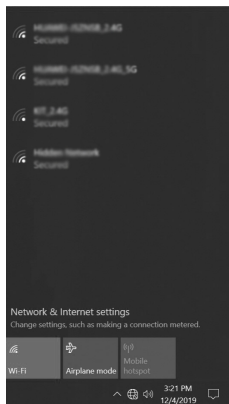
### Configuring a wireless connection

Please follow the instructions below to connect to a wireless network:

1. Double-click the wireless network icon in the notification area.
2. Select the wireless network you want to connect to from the list and click Connect.
3. After connection is established, you will see “Connected.”

Note 1: For security concerns, Do NOT connect to an unsecured network, otherwise, the transmitted information without encryption might be visible to others.

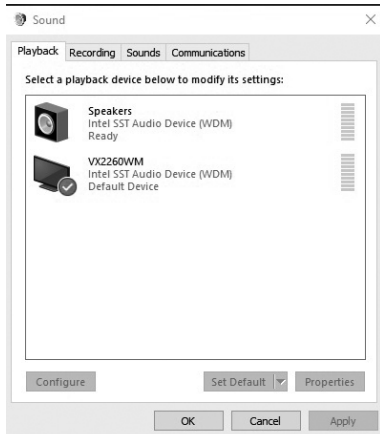
Note 2: Enter the network security key if necessary.



### Configuring audio output

Follow the steps below to enable audio output via HDMI/ DP when connecting the ZP-PI336 to a TV or receiver via HDMI/ DP.

1. Access the Sound settings via the system Control Panel.
2. Under Playback devices, click the display device that corresponds with your HDMI/ DP audio compatible display
3. Click the “Set Default” button in the lower right hand corner.
4. Click “OK” to exit the setup.



---

## **Watch Dog Timer function**

This device support Watch Dog Timer. The detail of Watch Dog Timer function, user manual, demonstration application and source code for Windows and Linux can refer to the Watch Dog Timer driver folder on the USB driver.



[facebook.com/zotac](https://facebook.com/zotac)



[twitter.com/zotac](https://twitter.com/zotac)



[instagram.com/zotac\\_official](https://instagram.com/zotac_official)



[youtube.com/zotacofficial](https://youtube.com/zotacofficial)



[vimeo.com/zotac](https://vimeo.com/zotac)



209-MB450-00ZTF