

USER'S MANUAL

EMBEDDED
SOLUTIONS

ZP-CI342

User's Manual



No part of this manual, including the products and software described in it, may be reproduced, transmitted, transcribed, stored in a retrieval system, or translated into any language in any form or by any means, except by the purchaser for backup purposes, without the express written permission of ZOTAC.

Products and corporate names mentioned in this manual may be registered trademarks or copyrights of their respective companies, and are used for identification purposes only. All trademarks are the property of their respective owners.

Every effort has been made to ensure the contents of this manual are correct and up to date. However, the manufacturer makes no guarantee regarding the accuracy of its contents, and reserves the right to make changes without prior notice.

Table of Contents

| | |
|---|-----------|
| Product specifications | 3 |
| Safety information | 4 |
| Setting up your system | 4 |
| Care during use | 4 |
| Welcome | 5 |
| Package contents | 5 |
| Getting to know your ZP-CI342 | 6 |
| Front view | 6 |
| Rear view | 7 |
| Customizing the ZP-CI342 | 9 |
| Installing a memory module | 10 |
| Removing the memory module | 11 |
| Installing M.2 SSD 2242 / 2280 module | 12 |
| Setting up your ZP-CI342 | 14 |
| Positioning the ZP-CI342 | 16 |
| Mounting the ZP-CI342 to an LCD monitor | 16 |
| Installing drivers and software | 18 |
| Installing an operating system | 18 |
| Installing system drivers | 18 |
| Using your ZP-CI342 | 19 |
| Configuring a wireless connection | 19 |
| Configuring audio output | 20 |
| Watch Dog Timer function | 20 |

Specifications

Microprocessor Support

- Intel Pentium N6415 (1.2GHz/3.0GHz, 1.5MB cache)

Onboard Graphics Support

- Integrated Intel UHD Graphics
- HDMI 2.0 (max resolution: 4096x2160 @60Hz)
- DP 1.2 (max resolution: 4096x2160 @60Hz)

Memory

- 2x DDR4-3200 SO-DIMM slot
- Max 32GB

USB Ports

- 2x USB 3.1 ports
- 1x USB 3.1 Type-C port

Audio

- 1x 3.5mm stereo out & microphone combo

Storage

- 1x 2242/2280 M.2 x2 lane NVMe SSD
- MicroSD/microSDHC/microSDXC card reader slot

Network

- 2x Gigabit Ethernet LAN
- Supports Wake-on-LAN

WiFi Support

- WIFI 6E, IEEE 802.11 a/b/g/n/ac/ax
- Bluetooth 5.2

Operating Systems

- Supports Windows 11, Windows 10, Windows 10 IoT ENT LTSC, and Ubuntu 20.04 LTS Linux

H/W watchdog timer

- Timeout value = 1 ~ 255. Unit: minute/second

Universal AC Adapter

- DC output = DC19V/40W

Case Dimension

- 147.2mm x 147.2mm x 31.1mm

Safety instructions

ZP-CI342 is designed and tested to meet the latest standards of safety for information technology equipment. However, to ensure your safety, it is important that you read the following safety instructions.

- ❖ Read and follow all instructions in the documentation before you operate your system.
- ❖ Do not use this product near water or a heat source such as a radiator.
- ❖ Set up the system on a stable surface with the provided stand. Never use the system alone without the stand.
- ❖ Openings on the chassis are for ventilation. Do not block or cover these openings.
- ❖ Make sure you leave plenty of space around the system for ventilation. Never insert objects of any kind into the ventilation openings.
- ❖ Use this product in environments with ambient temperature on below conditions:
Main unit: -20°C - +45°C
AC adapter: +0°C ~ +40°C
- ❖ Do not walk on the power cord or allow anything to rest on it.
- ❖ Do not spill water or any other liquids on your system.
- ❖ When the system is turned off, a small amount of electrical current still flows. Always unplug all power, modem, and network cables from the power outlets before cleaning the system.
- ❖ If you encounter the following technical problems with the product, unplug the power cord and contact a qualified service technician or your retailer.
 - The power cord or plug is damaged.
 - Liquid has been spilled into the system.
 - The system does not function properly even if you follow the operating instructions.
 - The system was dropped or the cabinet is damaged.
 - The system performance changes.

Welcome

Congratulations on your purchase of the ZP-CI342. The following illustration displays the package contents of your new ZP-CI342. If any of the below items are damaged or missing, contact your retailer.

Package contents

- 1 x ZP-CI342
- 1 x L-mount kit with 4 screws
- 1 x VESA mount kit
- 1 x AC Adapter
- 1 x Power Cord
- 2 x Tri-band antenna
- 1 x USB flash drive with OS drivers
- 1 x User Manual (soft copy)

Getting to know your ZP-CI342

Front view



Refer to the diagram below to identify the components on the front of the system.

1. Power button with LED indicator

The power button turns the system ON and OFF. (Green=on, Red=standby)

2. COM port

Use the COM port to connect serial devices such as mouse or fax/modem.

3. MicroSD memory card slot

The built-in memory card reader supports Micro SDHC/SDXC cards to expand the storage capabilities of the ZP-CI342.

4. USB 3.1 Type-C port

The type-C USB 3.1 port supports the SuperSpeed USB 3.1 devices. Use this port for USB 3.1 devices for maximum performance with USB 3.1 compatible devices.

5. USB 3.1 port

The USB 3.1 port supports the SuperSpeed USB 3.1 devices and is backwards compatible with USB 3.0/2.0/1.1 devices. Use this port for USB 3.1 devices for maximum performance with USB 3.1 compatible devices.

6. Combo Headphone/Microphone jack (3.5mm)

The combo headphone/microphone jack (3.5mm) is used to connect the system's audio out signal to amplified speakers, 3-pole headphones or 4-pole CTIA headphones.

 Note: The combo headphone/microphone jack does not support the traditional microphone.

Rear view



Refer to the diagram below to identify the components on the back of the system.

1. Ethernet ports

The eight-pin RJ-45 LAN port supports standard Ethernet cable for connections to local area networks (LAN) with speeds of 10/100/1000Mbps.

2. USB 3.1 port

The USB 3.1 port supports the SuperSpeed USB 3.1 devices and is backwards compatible with USB 3.0/2.0/1.1 devices. Use this port for USB 3.1 devices for maximum performance with USB 3.1 compatible devices.

3. DisplayPort

DisplayPort supports external connection up to DP1.2, max resolution 4096x2160 @60Hz.

4. HDMI port

The HDMI (High Definition Multimedia Interface) port supports with HDMI2.0, max resolution 4096x2160 @60Hz.

5. Power input (DC19V)

The supplied power adapter converts AC power to DC power for use with this jack. Power supplied through this jack supplies power to the PC. To prevent damage to the PC, always use the supplied power adapter.

⚠ The power adapter may become warm to hot when in use. Do not cover the adapter and keep it away from your body.

Right view



Refer to the diagram below to identify the components on the right of the system.

1. WiFi antenna connectors

The WiFi antenna connector supports the included WiFi antenna.

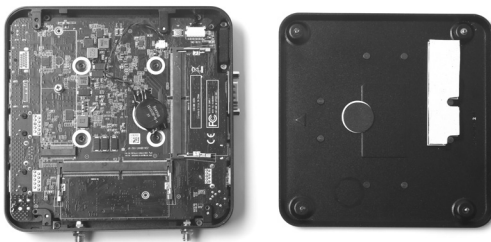
Customizing the ZP-CI342

Before installing hardware, please follow the instructions below to remove the cover of your ZP-CI342.

1. Loosen the 4 screws securing the bottom cover.

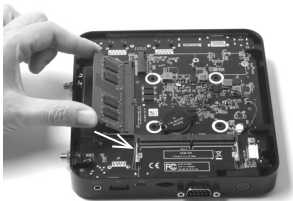


2. Remove the bottom cover.



Installing a memory module

1. Locate the SO-DIMM memory slots and insert a SO-DIMM memory module into the slot at a 45 degree angle.



2. Gently press down on the memory module until it locks into place by the arms of the memory slot.



Note: This ZP-CI342 accommodates two DDR4 SO-DIMM memory modules. You must install at least one module for the system to function. PLUS / Windows models include memory pre-installed.

Removing the memory module

1. Locate the SO-DIMM memory slot and gently press the two arms securing the memory module outwards, as shown in the image below, to release the memory module.

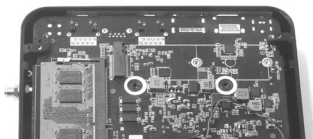
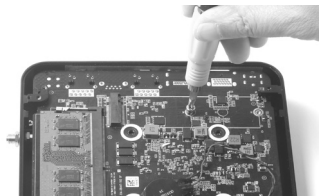


2. Remove the memory module from the slot.



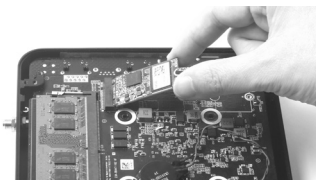
Installing M.2 SATA SSD 2242/2280 module

1. Locate the M.2 SSD slot and remove the screw.

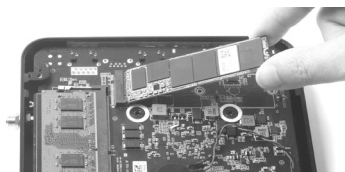


2. Insert an M.2 SATA SSD module into the slot at a 45 degree angle.

M.2 SATA SSD 2242:

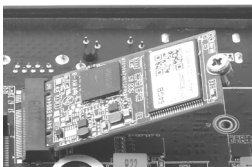


M.2 SATA SSD 2280:

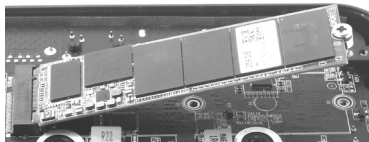


3. Attach the screw to the M.2 SATA SSD module as shown below.

M.2 SATA SSD 2242:

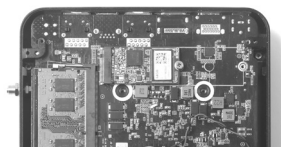
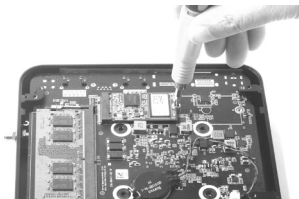


M.2 SATA SSD 2280:

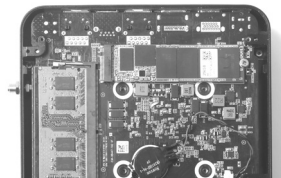
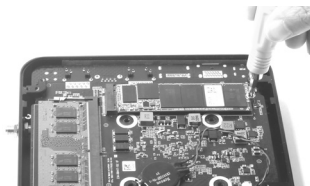


-
4. Gently press down on the M.2 SATA SSD module, and install the screw on board.

M.2 SATA SSD 2242:



M.2 SATA SSD 2280:



Note: PLUS/ Windows models include SSD pre-installed.

Setting up your ZP-CI342

Please connect your peripherals before using your ZP-CI342



1. Connecting to a network device

Connect one end of a network cable to the LAN port on the system rear panel and the other end to a network hub, switch or router.

2. Connecting to USB 3.1 devices

Connect USB 3.1 devices such as external hard disk drives, SSDs and flash drives to the USB 3.1 port on the system rear panel.

3. Connecting a DisplayPort display

Connect the DisplayPort connector to the DP port of the monitor or display.

4. Connecting to an HDMI display

Connect one end of an HDMI cable to an HDTV or monitor, and the other end to the HDMI port on the system rear panel.

5. Connecting the power adapter and turning on the ZP-CI342

Connect the supplied AC adapter to the DC IN jack on the system rear panel and then press the power switch on the front panel to turn on the system.

- ☞ When your ZP-CI342 is not in use, unplug the power adapter or switch off the AC outlet to conserve power.

Positioning the ZP-CI342

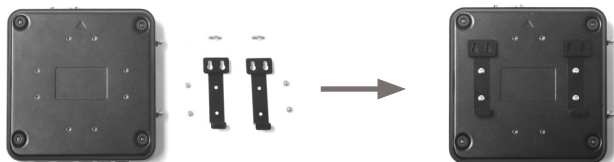
- Do not position the ZP-CI342 where the ventilation holes are covered. To guarantee proper use, leave 4 inches (10 cm) of spacing in front of the ventilation holes.
- ZP-CI342 mini-PC systems provide ample connectivity in a tiny form factor, please choose connectors and cables in appropriate sizes to avoid interference.

Mounting the ZP-CI342 to an LCD monitor

You can attach your ZP-CI342 to the back of a VESA75/100 compliant monitor.

1. Secure the VESA mount brackets to the bottom cover using 4 screws.

Disclaimer: ZOTAC cannot be held liable for damages resulting from an improper installation.



2. Install the VESA mount attachment pegs to the LCD monitor.



-
3. Align the ZP-CI342 mounting holes to the VESA mount attachment pegs, and gently press down to secure it to the mount.



4. Connect the ZP-CI342 to your LCD monitor with an HDMI/DP cable.

Installing drivers and software

Installing an operating system

The ZP-CI342 does not ship with an operating system preinstalled. The user must install the operating system before the ZP-CI342 can be used. The following operating systems are supported:

- Windows 10/ 11
- Windows 10 IoT ENT LTSC
- Ubuntu 20.04 LTS

Follow the instructions below to install an operating system:

1. Attach external USB flash drive via USB 3.1 ports.
2. Wait for the ZP-CI342 to boot from the drive.
3. Follow the onscreen directions to install the operating system.
4. Install system drivers to gain full functionality of the ZP-CI342 hardware and features.

Installing system drivers

Before you can use the full features of the ZP-CI342, the system drivers must be installed. The following types of operating systems are supported by the ZP-CI342 USB flash drive:

- Windows 10/ 11
- Windows 10 IoT ENT LTSC
- Ubuntu 20.04 LTS

Follow the instructions below to install the system drivers:

1. Insert the ZP-CI342 driver USB flash drive. If autorun is enabled, the driver installation main menu will show up automatically. If autorun is disabled, you may click the file Launch.EXE to bring up the driver installation main menu.
2. The following drivers are available on the USB flash drive:
 - Intel Chipset Driver
 - HDA Sound Driver



- Intel Graphics Driver
- Realtek Ethernet PCI-E Driver
- Wireless Network Driver
- Bluetooth Driver
- Intel Management Engine
- CardReader Driver
- Intel HID Driver
- Intel SerialIO

- ☞ Each driver must be installed individually to ensure proper operation of the ZP-CI342 .
3. Select the driver you want to install. The driver installer should launch.
 4. Follow the onscreen instructions to install the drivers.
 5. Restart the system.

Using your ZP-CI342

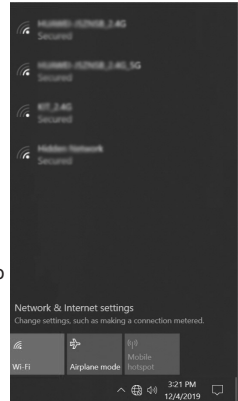
Configuring a wireless connection

Please follow the instructions below to connect to a wireless network:

1. Double-click the wireless network icon in the notification area.
2. Select the wireless network you want to connect to from the list and click Connect.
3. After connection is established, you will see “Connected.”

Note 1: For security concerns, Do NOT connect to an unsecured network, otherwise, the transmitted information without encryption might be visible to others.

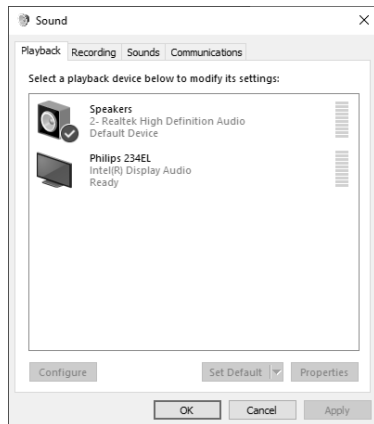
Note 2: Enter the network security key if necessary.



Configuring audio output

Follow the steps below to enable audio output when connecting the ZP-CI342 to a TV or receiver via DP/HDMI adapter.

1. Access the Sound settings via the system Control Panel.
2. Under Playback devices, click the display device that corresponds with your audio compatible display.
3. Click the “Set Default” button in the lower right hand corner.
4. Click “OK” to exit the setup.



Watch Dog Timer function

This device support Watch Dog Timer. The detail of Watch Dog Timer function, user manual, demonstration application and source code for Windows and Linux can refer to the Watch Dog Timer driver folder on the USB driver.



facebook.com/zotac



twitter.com/zotac



instagram.com/zotac_official



youtube.com/zotacofficial



vimeo.com/zotac



209-MB447-00ZTF