

ZOTAC

ZBOX

USER'S MANUAL
CI342 EDGE

C SERIES

ZOTAC ZBOX

User's Manual



No part of this manual, including the products and software described in it, may be reproduced, transmitted, transcribed, stored in a retrieval system, or translated into any language in any form or by any means, except documentation kept by the purchaser for backup purposes, without the express written permission of ZOTAC.

Products and corporate names mentioned in this manual may be registered trademarks or copyrights of their respective companies, and are used for identification purposes only. All trademarks are the property of their respective owners.

Every effort has been made to ensure that the contents of this manual are correct and up to date. However, the manufacturer makes no guarantee regarding the accuracy of its contents, and reserves the right to make changes without prior notice.

CAUTION:

Risk of explosion if the battery is replaced with an incorrect type. Batteries should be recycled where possible. Disposal of used batteries must be in accordance with local environmental regulations.

Table of Contents

Product specifications	3
Safety information	4
Setting up your system	4
Care during use	4
Welcome	5
Package contents	5
Getting to know your ZOTAC ZBOX	6
Front view	6
Rear view	7
Customizing the ZOTAC ZBOX	8
Installing a memory module	9
Removing the memory module	10
Installing M.2 PCIe x2 / SATA SSD 2242 / 2280 module	11
Setting up your ZOTAC ZBOX	13
Positioning the ZOTAC ZBOX	15
Mounting the ZOTAC ZBOX to an LCD monitor	15
Installing drivers and software	17
Using your ZOTAC ZBOX	17
Configuring a wireless connection	17
Configuring audio output	17
FCC Warning	18
IC Warning	19

Product specifications

Processor

- Intel Pentium Processor N6415 (quad core, 1.2 GHz , up to 3.0 GHz)

Onboard graphics

- Intel UHD Graphics
- HDMI 2.0b (max resolution: 4096×2160 @60Hz)
- DP 1.2 (max resolution: 4096×2160 @60Hz)

Memory support

- 2 x DDR4-3200/2666 SODIMM Slots
- Up to 32 GB of memory

USB ports

- 1 x USB 3.1 Type-C port
- 2 x USB 3.1 ports

Storage support

- 1 x M.2 PCIe 3.0 x2 / SATA SSD slot (22/42, 22/80)
- 1 x micro SDHC/SDXC card reader

Network support

- Dual Gigabit (10/100/1000Mbps) LAN
- IEEE 802.3 compatible

Wi-Fi support

- WiFi 6E
- Bluetooth 5.2

Onboard Audio

- Digital 8 Channel Audio (LPCM/bitstream via HDMI)
- Analog audio combo (CTIA) for headphone output/Microphone input

Operating System support

- Windows 11

Power Supply

- 19V/40W, 19V/45W (alternative source)

Product Dimensions

- 147.2mm x 147.2mm x 32.1mm

Safety information

Your ZOTAC ZBOX is designed and tested to meet the latest standards of safety for information technology equipment. However, to ensure your safety, it is important that you read the following safety instructions.

Setting up your system

- ❖ Read and follow all instructions in the documentation before operating your system.
- ❖ Do not use this product near water or a heat source such as a radiator.
- ❖ Set up the system on a stable surface with the provided stand. Never use the system alone without the stand.
- ❖ Openings on the chassis are for ventilation. Do not block or cover these openings. Make sure you leave plenty of space around the system for ventilation. Never insert objects of any kind into the ventilation openings.
- ❖ Use this product in environments with ambient temperatures between 0°C and 35°C.

Care during use

- ❖ Do not walk on the power cord or allow anything to rest on it.
- ❖ Do not spill water or any other liquids on your system.
- ❖ When the system is turned off, a small amount of electrical current still flows. Always unplug all power, modem, and network cables from the power outlets before cleaning the system.
- ❖ If you encounter the following technical problems with the product, unplug the power cord and contact a qualified service technician or your retailer.
 - The power cord or plug is damaged.
 - Liquid has been spilled into the system.
 - The system does not function properly even if you follow the operating instructions.
 - The system was dropped or the cabinet is damaged.
 - The system performance changes.

Welcome

Congratulations on your purchase of the ZOTAC ZBOX. The following illustration displays the package contents of your new ZOTAC ZBOX. If any of the below items are damaged or missing, contact your retailer.

Package contents

- 1 x ZOTAC ZBOX
- 2 x VESA mount bracket (w/ screws)
- 1 x AC Adapter
- 1 x Power Cord
- 1 x Antenna
- 1 x USB flash drive with OS recovery (Windows version)
- 1 x Quick Start Guide



Getting to know your ZOTAC ZBOX

Front view



Refer to the diagram below to identify the components on the front of the ZBOX.

1. Power button

The power button turns the system ON and OFF.

2. MicroSD memory card slot

The built-in memory card reader supports Micro SDHC/SDXC cards to expand the storage capabilities of the ZOTAC ZBOX.

3. USB 3.1 Type-C port

The type-C USB 3.1 port supports the SuperSpeed USB 3.1 devices. Use this port for USB 3.1 devices for maximum performance with USB 3.1 compatible devices.

4. USB 3.1 port

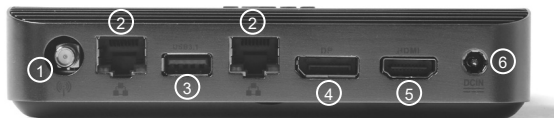
The USB 3.1 port supports the SuperSpeed USB 3.1 devices and is backwards compatible with USB 3.0/2.0/1.1 devices. Use this port for USB 3.1 devices for maximum performance with USB 3.1 compatible devices.

5. Combo Headphone/Microphone jack (3.5mm)

The combo headphone/microphone jack (3.5mm) is used to connect the system's audio out signal to amplified speakers, 3-pole headphones or 4-pole CTIA headphones.

☞ Note: The combo headphone/microphone jack does not support the traditional microphone.

Rear view



Refer to the diagram below to identify the components on the back of the system.

1. WiFi antenna connector

The WiFi antenna connector supports the included WiFi antenna.

2. Ethernet ports

The eight-pin RJ-45 LAN port supports standard Ethernet cable for connections to local area networks (LAN) with speeds of 10/100/1000Mbps.

3. USB 3.1 port

The USB 3.1 port supports the SuperSpeed USB 3.1 devices and is backwards compatible with USB 3.0/2.0/1.1 devices. Use this port for USB 3.1 devices for maximum performance with USB 3.1 compatible devices.

4. DisplayPort

DisplayPort supports both external (box-to-box) and internal (laptop LCD panel) display connections.

5. HDMI port

The HDMI (High Definition Multimedia Interface) port supports a UHD device such as an LCD TV or monitor to allow viewing on a larger external display.

6. Power input (DC19V)

The supplied power adapter converts AC power to DC power for use with this jack. Power supplied through this jack supplies power to the PC. To prevent damage to the PC, always use the supplied power adapter.

⚠ The power adapter may become warm to hot when in use. Do not cover the adapter and keep it away from your body.

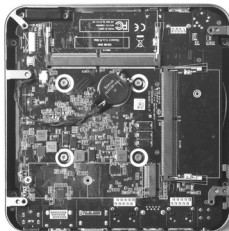
Customizing the ZOTAC ZBOX

Before installing hardware, please follow the instructions below to remove the cover of your ZOTAC ZBOX .

1. Loosen the 4 screws securing the bottom cover.

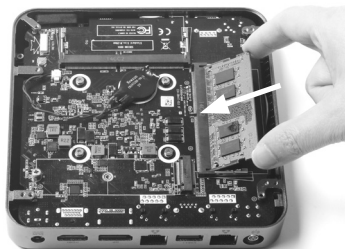


2. Remove the bottom cover.



Installing a memory module

1. Locate the SO-DIMM memory slots and insert a SO-DIMM memory module into the slot at a 45 degree angle.



2. Gently press down on the memory module until it locks into place by the arms of the memory slot.



Note: This ZOTAC ZBOX accommodates two DDR4 SO-DIMM memory modules. You must install at least one module for the system to function. PLUS / Windows models include memory pre-installed.

Removing the memory module

1. Locate the SO-DIMM memory slot and gently press the two arms securing the memory module outwards, as shown in the image below, to release the memory module.

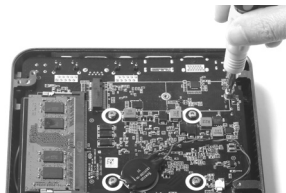


2. Remove the memory module from the slot at a 45-degree angle.



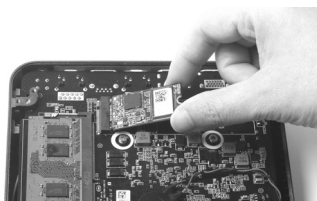
Installing M.2 PCIe x2 / SATA SSD 2242 / 2280 module

1. Locate the M.2 SSD slot and remove the screw.

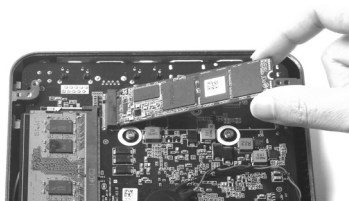


2. Insert an M.2 SSD module into the slot at a 45 degree angle.

M.2 SSD 2242:

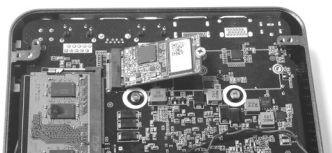


M.2 SSD 2280:

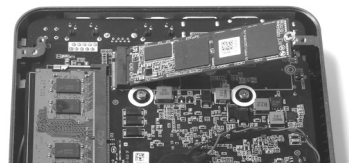


3. Attach the screw to the M.2 SSD module as shown below.

M.2 SSD 2242:

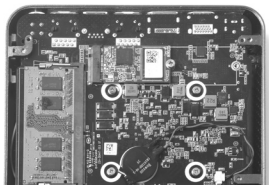
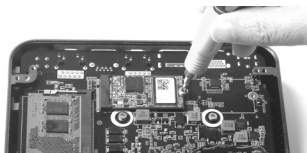


M.2 SSD 2280:

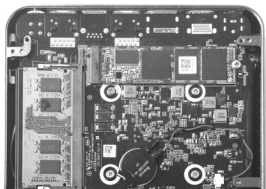
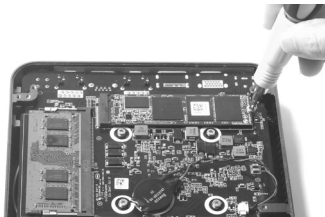


4. Gently press down on the M.2 SSD module, and install the screw on board.

M.2 SSD 2242:



M.2 SSD 2280:



Note: PLUS / Windows models include SSD pre-installed.

Setting up your ZOTAC ZBOX

Please connect your peripherals before using your ZOTAC ZBOX



1. Connecting the WiFi antenna

Connect the WiFi antenna to the WiFi antenna connector.

2. Connecting to a network device

Connect one end of a network cable to the LAN port on the system rear panel and the other end to a network hub, switch or router.

3. Connecting to USB 3.1 devices

Connect USB 3.1 devices such as external hard drives, SSDs and flash drives to the USB 3.1 port on the system rear panel.

4. Connecting a DisplayPort display

Connect the DisplayPort connector to the DP port of the monitor or display.

5. Connecting to an HDMI display

Connect one end of an HDMI cable to an HDTV or monitor, and the other end to the HDMI port on the system rear panel.

6. Connecting the power adapter and turning on the ZBOX

Connect the supplied AC adapter to the DC IN jack on the system rear panel and then press the power switch on the front panel to turn on the system.

☞ When your ZOTAC ZBOX is not in use, unplug the power adapter or switch off the AC outlet to conserve power.

Positioning the ZOTAC ZBOX

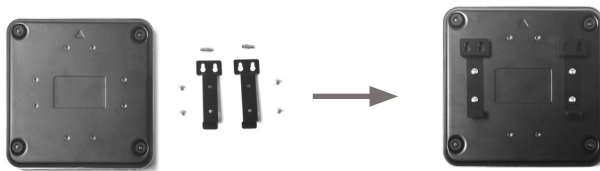
- Do not position the ZOTAC ZBOX where the ventilation holes are covered. To guarantee proper use, leave 4 inches (10 cm) of spacing in front of the ventilation holes.
- ZOTAC ZBOX mini-PC systems provide ample connectivity in a tiny form factor, please choose connectors and cables in appropriate sizes to avoid interference.

Mounting the ZOTAC ZBOX to an LCD monitor

You can attach your ZOTAC ZBOX to the back of a VESA75/100 compliant monitor.

1. Secure the VESA mount brackets to the bottom cover using 4 screws.

Disclaimer: ZOTAC cannot be held liable for damages resulting from an improper installation.



2. Install the VESA mount attachment pegs to the LCD monitor.



3. Align the ZOTAC ZBOX mounting holes to the VESA mount attachment pegs, and gently press down to secure the ZBOX to the mount.



4. Connect the ZOTAC ZBOX to your LCD monitor with an HDMI/DP cable.



Installing drivers and software

The ZOTAC ZBOX barebone version does not ship with an operating system preinstalled and driver. The user should download the devices driver from ZOTAC website.

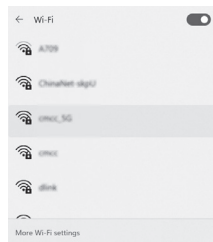
Using your ZOTAC ZBOX

Configuring a wireless connection

Please follow the instructions below to connect to a wireless network:

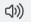
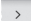
1. Click the icon  on the right of wireless network icon .
2. Select the wireless network you want to connect to from the list.

Note 1: For security concerns, Do NOT connect to an unsecured network, otherwise, the transmitted information without encryption might be visible to others.

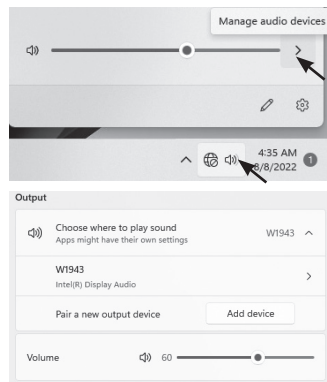


Configuring audio output

Follow the steps below to enable audio output when connecting the ZOTAC ZBOX to a TV or receiver via DP/ HDMI adapter.

1. Click the audio icon  in the notification area.
2. Click the icon  to manage audio devices.
3. Under Volume devices, click the display device that corresponds with your audio compatible display.

Note 2: Enter the network security key if necessary.



FCC Warning

This device complies with part 15 of the FCC Rules. Operation is subject to the following two conditions:

- (1) This device may not cause harmful interference,
- (2) This device must accept any interference received, including interference that may cause undesired operation.

Any Changes or modifications not expressly approved by the party responsible for compliance could void the user's authority to operate the equipment.

Note: This equipment has been tested and found to comply with the limits for a Class B digital device, pursuant to part 15 of the FCC Rules. These limits are designed to provide reasonable protection against harmful interference in a residential installation. This equipment generates uses and can radiate radio frequency energy and, if not installed and used in accordance with the instructions, may cause harmful interference to radio communications. However, there is no guarantee that interference will not occur in a particular installation. If this equipment does cause harmful interference to radio or television reception, which can be determined by turning the equipment off and on, the user is encouraged to try to correct the interference by one or more of the following measures:

- Reorient or relocate the receiving antenna.
- Increase the separation between the equipment and receiver.
- Connect the equipment into an outlet on a circuit different from that to which the receiver is connected.
- Consult the dealer or an experienced radio/TV technician for help.

This equipment complies with FCC radiation exposure limits set forth for an uncontrolled environment. This equipment should be installed and operated with minimum distance 20cm between the radiator & your body.

IC Warning

This device complies with Industry Canada's licence-exempt RSSs. Operation is subject to the following two conditions:

- (1) This device may not cause interference;
- (2) This device must accept any interference, including interference that may cause undesired operation of the device.

This equipment complies with ISED radiation exposure limits set forth for an uncontrolled environment. This equipment should be installed and operated with minimum distance 20cm between the radiator & your body.

Cet appareil est conforme aux CNR exemptes de licence d'Industrie Canada.

Son fonctionnement est soumis aux deux conditions suivantes:

- (1) Ce dispositif ne peut causer d'interférences;
- (2) Ce dispositif doit accepter toute interférence, y compris les interférences qui peuvent causer un mauvais fonctionnement de l'appareil.

Ce matériel est complété par une exposition de rayonnements ISED pour un environnement naturel. Ce matériel doit être installé et se faire avec une distance minimale de 20cm entre les radiateurs et les autres Your body shop.

THE STRONG SILENT TYPE



facebook.com/zotac



twitter.com/zotac



youtube.com/zotacofficial



vimeo.com/zotac



instagram.com/zotac_official



209-MB447-01W3F



ZOTAC.COM