






**INNOVATING THE PC  
IN EVERY BEST MINI WAY**

-  [facebook.com/zotac](https://facebook.com/zotac)
-  [twitter.com/zotac](https://twitter.com/zotac)
-  [youtube.com/zotacofficial](https://youtube.com/zotacofficial)
-  [vimeo.com/zotac](https://vimeo.com/zotac)
-  [instagram.com/zotac\\_official](https://instagram.com/zotac_official)



291-MB412-02U2F

**ZOTAC.COM**



**ZOTAC®**

**USER'S  
MANUAL**

**VR GO 3.0**

VR BACKPACK PC

# ZOTAC VR GO 3.0

## User's Manual



No part of this manual, including the products and software described in it, may be reproduced, transmitted, transcribed, stored in a retrieval system, or translated into any language in any form or by any means, except documentation kept by the purchaser for backup purposes, without the express written permission of ZOTAC.

Products and corporate names mentioned in this manual may be registered trademarks or copyrights of their respective companies, and are used for identification purposes only. All trademarks are the property of their respective owners.

Every effort has been made to ensure that the contents of this manual are correct and up to date. However, the manufacturer makes no guarantee regarding the accuracy of its contents, and reserves the right to make changes without prior notice.

### **CAUTION:**

Risk of explosion if the battery is replaced with an incorrect type. Batteries should be recycled where possible. Disposal of used batteries must be in accordance with local environmental regulations.

## Table of Contents

<b>Product specifications</b>	<b>3</b>
<b>Safety information</b>	<b>4</b>
Setting up your system	4
Care during use	4
<b>Welcome</b>	<b>5</b>
Package contents	5
<b>Getting to know your ZOTAC VR GO 3.0</b>	<b>6</b>
Top view	6
Right view	7
Front view	8
<b>How to disable Low Power Alarm in BIOS settings</b>	<b>9</b>
<b>Installing Hardware inside ZOTAC VR GO 3.0</b>	<b>11</b>
Installing a hard disk drive/SSD (optional)	12
Installing an M.2 NVMe SSD	14
Removing the memory module	16
Installing a memory module	18
Installing Battery	20
Removing Battery	21
Battery Charging	22
<b>Setting up your ZOTAC VR GO 3.0</b>	<b>24</b>
<b>Getting started with Windows 10 Pro 64-bit</b>	<b>26</b>
<b>Using your ZOTAC VR GO 3.0</b>	<b>31</b>
Configuring a wireless connection	31
Configuring audio output	31
<b>Attaching backpack</b>	<b>32</b>
<b>Recommended layout</b>	<b>34</b>
<b>Detaching backpack</b>	<b>35</b>

## Product specifications

- ❑ **Microprocessor support**
  - ❖ Intel Core i7-9750H (six-core, 2.6 GHz, up to 4.5 GHz)
- ❑ **Onboard Graphics support**
  - ❖ NVIDIA GeForce RTX 2070 8GB GDDR6
  - ❖ Two HDMI 2.0 ports, one DP 1.4 outputs (supports 4K @ 60 Hz)
- ❑ **Operating systems:**
  - ❖ Windows 10 Pro 64-bit pre-installed
- ❑ **System Memory support**
  - ❖ 16 GB DDR4 SO-DIMM
- ❑ **USB Ports**
  - ❖ Six USB 3.0 ports
- ❑ **Onboard Serial ATA**
  - ❖ Support one 2.5-inch SATA HDD or SSD (max 9.5mm height)
- ❑ **Expansion slot**
  - ❖ 240 GB M.2 NVMe SSD (compatible with PCIE x4/SATA 2240/2260/2280)
- ❑ **Onboard LAN**
  - ❖ Supports 10/100/1000 Mbps operation
  - ❖ Supports IEEE 802.3
- ❑ **WiFi/Bluetooth support**
  - ❖ Compliant with IEEE802.11ac standard
  - ❖ Bluetooth 5.0
- ❑ **Onboard Audio**
  - ❖ Stereo analog audio output and Microphone input
- ❑ **Power**
  - ❖ 19.5V/330W AC-DC Power adapter (For stand-alone PC or charging dock)
  - ❖ Two 6000mAh /86.4Wh Li-ion battery (support hot swap)
    - \*two batteries are required for maximum gaming performance
- ❑ **Product Size**
  - ❖ 347.5mm x 280.4mm x 87.1mm

## Safety information

Your ZOTAC VR GO 3.0 is designed and tested to meet the latest standards of safety for information technology equipment. However, to ensure your safety, it is important that you read the following safety instructions.

### Setting up your system

- ❖ Read and follow all instructions in the documentation before operating your system.
- ❖ Do not use this product near water or a heat source such as a radiator.
- ❖ Set up the system on a stable surface.
- ❖ Openings on the chassis are for ventilation. Do not block or cover these openings. Make sure you leave plenty of space around the system for ventilation. Never insert objects of any kind into the ventilation openings.
- ❖ Use this product in environments with ambient temperatures between 0°C and 35°C.

☞ If you use an extension cord, please use the UL listed cord and make sure that the total ampere rating of the devices plugged into the extension cord does not exceed its ampere rating.

### Care during use

- ❖ Do not walk on the power cord or allow anything to rest on it.
- ❖ Do not spill water or any other liquids on your system.
- ❖ When the system is turned off, a small amount of electrical current still flows. Always unplug all power, modem, and network cables from the power outlets before cleaning the system.
- ❖ If you encounter the following technical problems with the product, unplug the power cord and contact a qualified service technician or your retailer.
  - The power cord or plug is damaged.
  - Liquid has been spilled onto the system.
  - The system does not function properly even if you follow the operating instructions.
  - The system was dropped or the cabinet is damaged.

## Welcome

Congratulations on your purchase of the ZOTAC VR GO 3.0. The following illustration displays the package contents of your new ZOTAC VR GO 3.0. If any of the below items is damaged or missed, contact your retailer.

### Package contents

- 1 x ZOTAC VR GO 3.0
- 1 x Backpack Strap Add-on
- 1 x AC Adapter
- 1 x Power Cord
- 1 x DC 12V Power Cable
- 2 x Batteries
- 1 x Battery Charging Dock
- 1 x User Manual & Quick Start Guide
- 1 x Support DVD (optional)
- 1 x OS Recovery USB Drive



## Getting to know your ZOTAC VR GO 3.0

### Top view



#### 1. Power output (DC12V)

The power output is used to connect the supplied power to the VR display unit.

#### 2. HDMI port

The HDMI (High Definition Multimedia Interface) port supports a UHD device such as an LCD TV or monitor to allow viewing on a larger external display.

#### 3. USB 3.0 ports

The USB 3.0 port supports the SuperSpeed USB 3.0 devices and is backwards compatible with USB 2.0/1.1 devices. Use this port for USB 3.0 devices for maximum performance with USB 3.0 compatible devices.

## Right view



### 1. Power input (DC19.5V)

The supplied power adapter converts AC power to DC power for use with this jack. Power supplied through this jack supplies power to the PC only. It does not charge the batteries. To prevent damage to the PC, always use the supplied power adapter.

### 2. USB 3.0 ports

The USB 3.0 port supports the SuperSpeed USB 3.0 devices and is backwards compatible with USB 2.0/1.1 devices. Use this port for USB 3.0 devices for maximum performance with USB 3.0 compatible devices.

### 3. LAN port

The eight-pin RJ-45 LAN port supports standard Ethernet cables for connection to a local network.

### 4. Memory card slot

The Memory card slot is compatible with SD/SDHC/SDXC cards used in devices like digital cameras, MP3 players, mobile phones and PDAs.

### 5. DisplayPort

DisplayPort supports both external (box-to-box) and internal (laptop LCD panel) display connections.

### 6. HDMI port

The HDMI (High Definition Multimedia Interface) port supports a UHD device such as an LCD TV or monitor to allow viewing on a larger external display.

### 7. Headphone/Audio Out jack

The stereo headphone jack (3.5mm) is used to connect the system's audio out signal to amplified speakers or headphones.



## 8. Microphone jack

The microphone jack is designed to connect the microphone used for video conferencing, voice narrations or simple audio recordings.

## 9. Power output (DC12V)

The power output is used to connect DC 12V power to the VR head-mounted display.

 *The power adapter may become warm to hot when in use. Do not cover the adapter and keep it away from your body.*

## Front view



### 1. Power switch

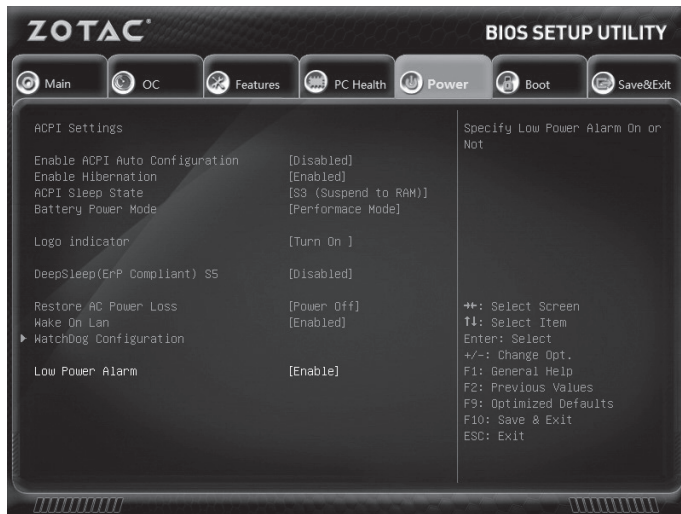
The power switch allows powering ON and OFF the system. The ring LED can be disabled in BIOS setting.

### 2. Battery lock

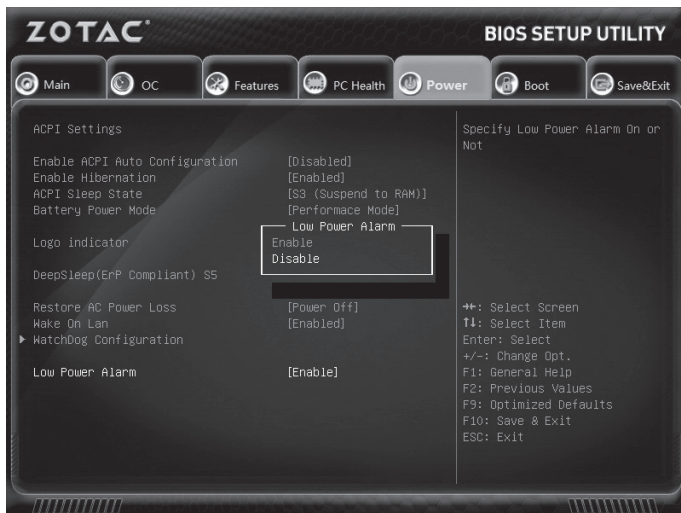
Use this battery lock to lock or unlock the battery.

## How to disable Low Power Alarm in BIOS settings

1. Turn on the VR GO 3.0 and press <Delete> to enter the BIOS SETUP UTILITY.
2. Use the arrow keys to navigate to the **Power** menu, select **Low Power Alarm** and press <Enter>.



3. Select [Disable] and press <Enter>.



4. Press F10 to save the configuration and exit.

## Installing Hardware inside ZOTAC VR GO 3.0

Before installing hardware, please follow the instructions below to remove the cover of your ZOTAC VR GO 3.0. Refer to page 35 to detach the backpack.

1. Lay the ZOTAC VR GO 3.0 on a flat surface with the back support facing upwards.
2. Locate the screws and remove.

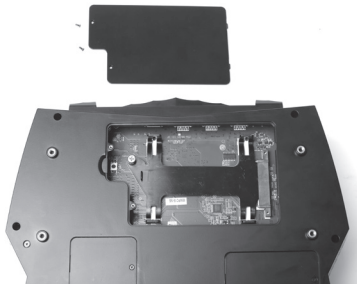
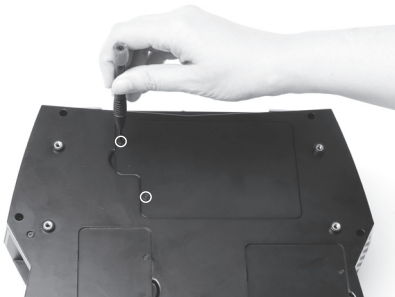


3. Lift the back support off the ZOTAC VR GO 3.0.

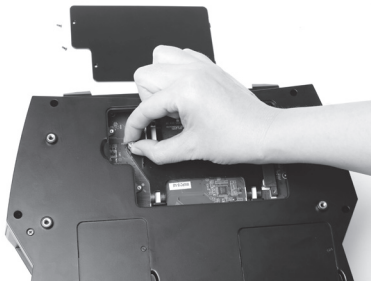


## **Installing a hard disk drive/SSD (optional)**

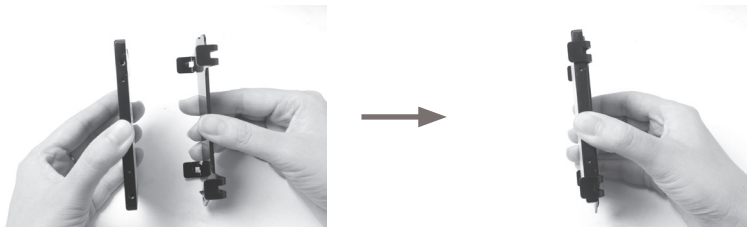
1. Unscrew and remove the hard disk drive cover.



2. Locate the 2.5-inch SATA hard disk drive/SSD slot and the drive bracket. Remove the thumb screw and bracket.



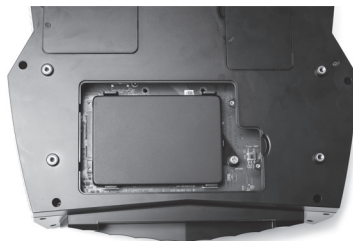
3. Install the hard disk drive/SSD to the drive bracket.



4. Insert the bracket into the SATA slot.

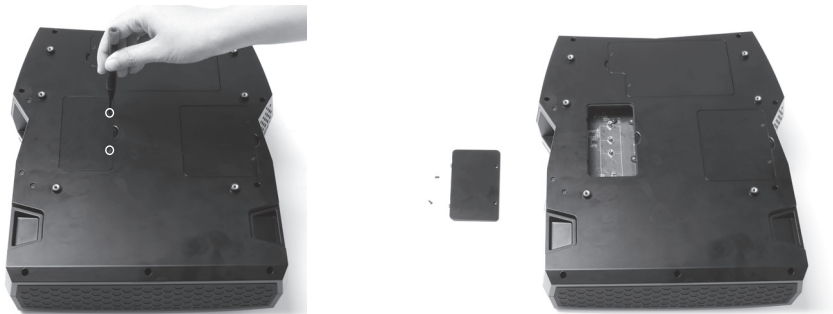


5. Reinstall the thumb screw and cover.



## Installing an M.2 NVMe SSD

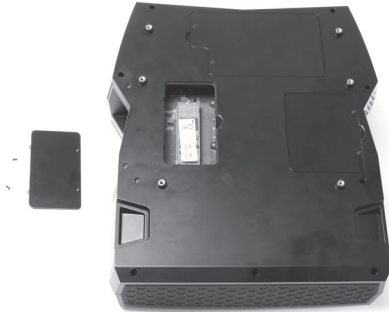
1. Unscrew and remove the M.2 NVMe SSD cover.



2. Insert an M.2 NVMe SSD into the slot at a 45 degree angle.



3. Install the M.2 NVMe SSD with screw and reinstall the cover.



Note: The system includes M.2 SSD pre-installed.

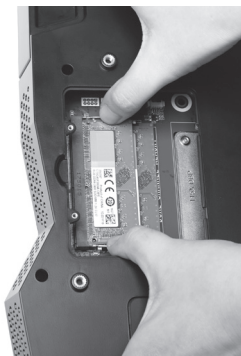


## Removing the memory module

1. Unscrew and remove the memory cover.



2. Gently press the two arms securing the memory module outwards, as shown in the image below, to release the memory module.



3. Remove the memory module from the slot.

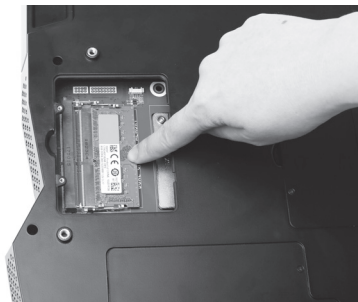


## Installing a memory module

1. Locate the SO-DIMM memory slots and insert a SO-DIMM memory module into the slot at a 45 degree angle.



2. Gently press down on the memory module until it locks into place by the arms of the memory slot.



Note: The system includes memories pre-installed.

3. If you need to install two memory modules, please follow the above steps to install the second one. Reinstall the memory cover

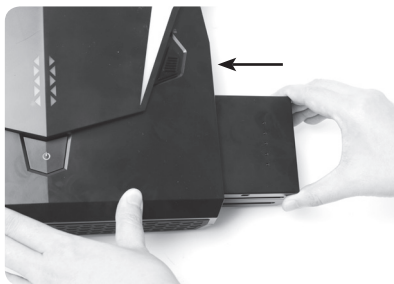


## Installing Battery

1. To ensure correct battery installation, locate the batteries and place them to the side of the system. Make sure the battery status indicators are visible face up and on the side facing the system. See below illustration.



2. Locate the battery case. Hold and insert the battery into the case.



3. Ensure that the battery is installed in place, and release the battery lock to “Lock” position.



Note: Only change one battery at a time to maintain power to the system when the system is powered on.

## Removing Battery

1. Push the battery lock to “Unlock” position and hold it.
2. Hold and pull the battery out of the battery case.



## Battery Charging

The VR GO 3.0 does not support charging the batteries directly. Please follow the instructions below to charge the batteries.

1. Insert the batteries into the battery charging dock.



2. Connect the AC adapter to the battery charging dock.



Note: The VR GO Batteries may not begin charging right away when inserted into the External Battery Charging Dock. This is a normal operating procedure. To ensure battery life longevity and safety, the charging of the VR GO Batteries will automatically begin charging when the batteries return to a normalized temperature. The LEDs on the VR GO Batteries will begin flashing when charging has started.

3. All battery LEDs will be OFF when fully charged.



4. Press the battery status button to check battery status.





## Setting up your ZOTAC VR GO 3.0

You need to connect peripherals before using your ZOTAC VR GO 3.0.



### 1. Connecting to USB 3.0 devices

Connect USB 3.0 devices such as external hard drives, SSDs and flash drives to the USB 3.0 port on the system rear panel.

### 2. Connecting to a network device

Connect one end of a network cable to the LAN port on the system rear panel and the other End to a hub or switch.

### 3. Connecting to DisplayPort display

Connect the DisplayPort connector to the DP ports of the monitor or display.

**4. Connecting to HDMI display**

Connect one end of an HDMI cable to the HDMI port on the system rear panel and the other end to a HDMI-compatible display such as an HDTV or monitor.

**5. Connecting to a headphone/audio out device**

Connect audio out device like headphone to the headphone/audio out jack.

**6. Connecting to microphone device**

Connect microphone device to the microphone jack.

**7. Connecting to VR head-mounted display (optional)**

Connect the DC 12V power to the VR head-mounted display.

**8. Connecting the power adapter to stand-alone VR GO 3.0 PC**

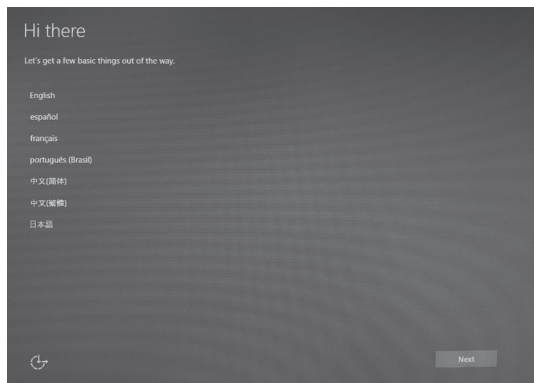
Connect the supplied AC adapter to the DC IN jack on the system rear panel and then press the power switch on the front panel to turn on the system.

☞ When your ZOTAC VR GO 3.0 is not in use, unplug the power adapter or switch off the AC outlet to save power.

## Getting started with Windows 10 Pro 64-bit

Please follow the steps below to begin using your VR GO 3.0 with Windows 10 Pro 64-bit.

1. Power on the system.
2. Connect to the Internet via Ethernet or Wi-Fi.
3. Select the language and region.



Hi there

Let's get a few basic things out of the way.

English

What's your home country/region?

United States

What's your preferred app language?

English (United States)

What keyboard layout would you like to use?

US

What time zone are you in?

(UTC-08:00) Pacific Time (US & Canada)

español

français

Next

#### 4. Read and accept the license terms.

Here's the legal stuff

Last updated July 2015

MICROSOFT SOFTWARE LICENSE TERMS

WINDOWS OPERATING SYSTEM

IF YOU LIVE IN (OR IF YOUR PRINCIPAL PLACE OF BUSINESS IS IN) THE UNITED STATES, PLEASE READ THE BINDING ARBITRATION CLAUSE AND CLASS ACTION WAIVER IN SECTION 10. IT AFFECTS HOW DISPUTES ARE RESOLVED.

**Thank you for choosing Microsoft!**

Depending on how you obtained the Windows software, this is a license agreement between (i) you and the device manufacturer or software installer that distributes the software with your device, or (ii) you and Microsoft Corporation (or, based on where you live or if a business where your principal place of business is located, one of its affiliates) if you acquired the software from a retailer. Microsoft is the device manufacturer for devices produced by Microsoft or one of its affiliates, and Microsoft is the retailer if you acquired the software directly from Microsoft.

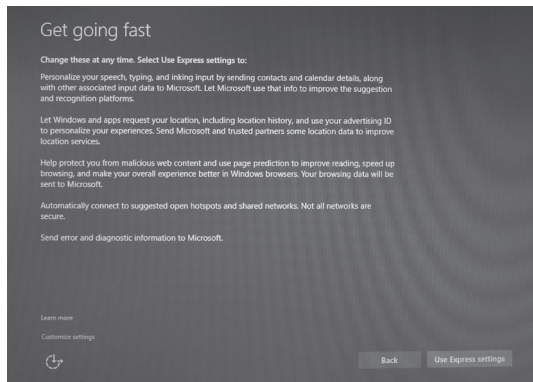
This agreement describes your rights and the conditions upon which you may use the Windows software. You should review the entire agreement, including any supplemental license terms that accompany the software and any linked terms, because all of the terms are important and together create this agreement that applies to you. You can review linked terms by pasting the (aka.ms/) link into a browser window.

**By accepting this agreement or using the software, you agree to all of these terms, and consent to the transmission of certain information during activation and during your use of the software as per the privacy statement described in Section 3. If you do not accept and comply with these terms, you may not use the software or its features. You may contact the device manufacturer or installer, or your retailer if you purchased the software directly, to determine its return policy and return the software or device for a refund or credit under that policy. You must comply with that policy, which might require you to return the software with the entire device on which the software is installed for a refund or credit, if any.**

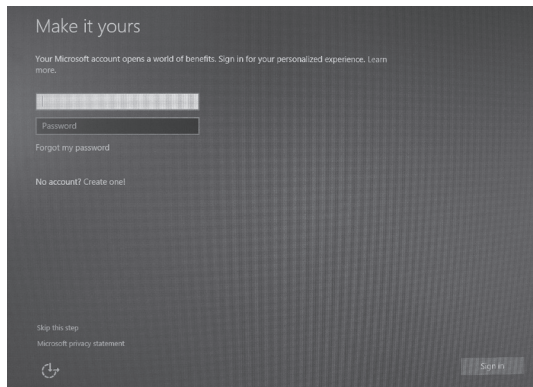
1 Privacy statement

Accept

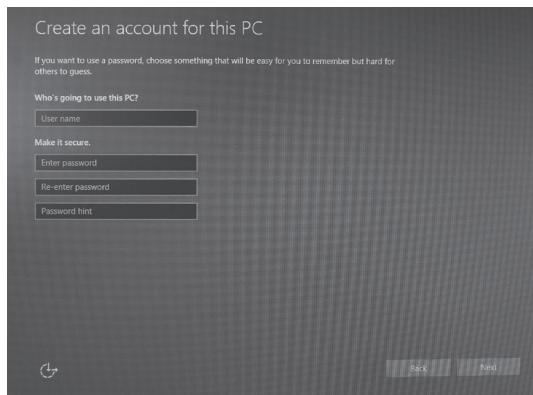
## 5. We recommend using the express settings.



## 6. Create a Microsoft new account if you don't have one. Otherwise, select "Sign in".



## 7. Setup your account.



Create an account for this PC

If you want to use a password, choose something that will be easy for you to remember but hard for others to guess.

Who's going to use this PC?

User name

Make it secure.

Enter password

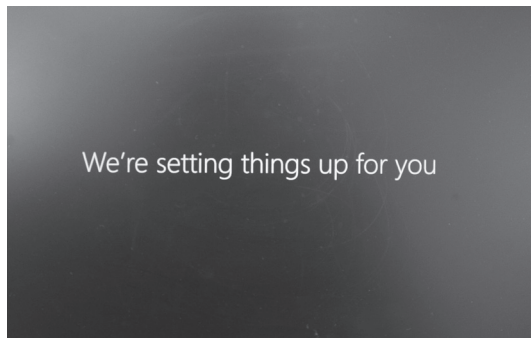
Re-enter password

Password hint

Back Next

The screenshot shows the Windows 10 account creation interface. It has a dark gray background with a subtle grid pattern. The title 'Create an account for this PC' is at the top. Below it is a tip about choosing a password. The main section is titled 'Who's going to use this PC?' and contains four input fields: 'User name', 'Enter password', 'Re-enter password', and 'Password hint'. At the bottom right are 'Back' and 'Next' buttons. A small icon is in the bottom left corner.

## 8. Wait for the initial system setup to complete .



# Taking care of a few things

Setting up your apps

## Using your ZOTAC VR GO 3.0

### Configuring a wireless connection

Please follow the instructions below to connect to a wireless network:

1. Double-click the wireless network icon (pic) in the notification area.
2. Select the wireless network you want to connect to from the list and click Connect.
3. After connection is established, you will see “Connected.”

Note 1: For security concerns, Do NOT connect to an unsecured network, otherwise, the transmitted information without encryption might be visible to others.

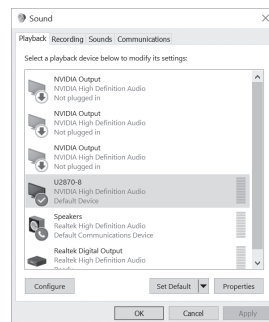
Note 2: Enter the network security key if necessary.



### Configuring audio output

Follow the steps below to enable audio output when connecting the ZOTAC VR GO 3.0 to a TV or receiver via DP/HDMI adapter.

1. Access the Sound settings via the system Control Panel.
2. Under Playback devices, click the display device that corresponds with your audio compatible display.
3. Click the “Set Default” button in the lower right hand corner.
4. Click “OK” to exit the setup.





## Attaching backpack

1. Lay the ZOTAC VR GO 3.0 and the backpack on a flat surface.



2. Lay the ZOTAC VR GO 3.0 on the backpack. Align the white line of backpack with the bottom of VR GO 3.0.



3. Push the ZOTAC VR GO 3.0. When you hear a click, it means the installation is in place.



## Recommended layout



Note: VR devices are not included.

## Detaching backpack

1. Lay the backpack on a flat surface with the ZOTAC VR GO 3.0 facing upwards.



2. Pull the lever of the backpack, and push the VR GO 3.0 to release it.



3. Remove the ZOTAC VR GO 3.0 from the backpack.

