

**PUSH  
YOUR  
SKILL**

GO TO →

**ZOTAC-CUP.COM**

**ZOTAC®**  
ZOTAC.COM

THE ORIGINAL  
MINI PC



facebook.com/zotac



twitter.com/zotac



youtube.com/c/zotacofficial



vimeo.com/zotac



instagram.com/zotac\_official



291-MB329-01Q0F



## USER'S MANUAL

**ZOTAC**  
**ZBOX**  
CI549nano

C SERIES

# ZOTAC ZBOX nano

## User's Manual



No part of this manual, including the products and software described in it, may be reproduced, transmitted, transcribed, stored in a retrieval system, or translated into any language in any form or by any means, except documentation kept by the purchaser for backup purposes, without the express written permission of ZOTAC.

Products and corporate names mentioned in this manual may not be registered trademarks or copyrights of their respective companies, and are used for identification purposes only. All trademarks are the property of their respective owners.

Every effort has been made to ensure that the contents of this manual are correct and up to date. However, the manufacturer makes no guarantee regarding the accuracy of its contents, and reserves the right to make changes without prior notice.

### **CAUTION:**

Risk of explosion if the battery is replaced with an incorrect type. Batteries should be recycled where possible. Disposal of used batteries must be in accordance with local environmental regulations.

## Table of Contents

|  |           |
|--|-----------|
| <b>Product specifications</b>                  | <b>3</b>  |
| <b>Safety information</b>                      | <b>4</b>  |
| Setting up your system                         | 4         |
| Care during use                                | 4         |
| <b>Welcome</b>                                 | <b>5</b>  |
| Package contents                               | 5         |
| <b>Getting to know your ZOTAC ZBOX nano</b>    | <b>6</b>  |
| Front view                                     | 6         |
| Rear view                                      | 7         |
| <b>Customizing the ZOTAC ZBOX nano</b>         | <b>8</b>  |
| Installing a memory module                     | 9         |
| Removing the memory module                     | 10        |
| Installing a hard disk drive                   | 11        |
| <b>Setting up your ZOTAC ZBOX nano</b>         | <b>15</b> |
| <b>Positioning the ZOTAC ZBOX nano</b>         | <b>17</b> |
| Mounting the ZOTAC ZBOX nano to an LCD monitor | 17        |
| <b>Installing drivers and software</b>         | <b>19</b> |
| Installing an operating system                 | 19        |
| Installing system drivers                      | 19        |
| <b>Using your ZOTAC ZBOX nano</b>              | <b>20</b> |
| Configuring a wireless connection              | 20        |
| Configuring a wired connection                 | 21        |
| Using a static IP                              | 21        |
| Using a dynamic IP (PPPoE connection)          | 21        |
| Configuring audio output                       | 22        |

---

## Product specifications

### Processor

- Intel Core i5-7300U (dual core, 2.6 GHz, up to 3.5 GHz)

### Onboard graphics

- Intel HD Graphics 620
- Intel Quick Sync Video
- HDMI 2.0 (max resolution: 3840x2160 @60Hz)

### Memory support

- 2 DDR4-2133/1866 SODIMM slots
- Up to 32 GB of memory

### USB ports

- 4 USB 3.0 ports
- 2 USB 3.1 Type-C ports

### 40Gb/s Thunderbolt™ 3 support

- Bi-directional, PCI Express and DisplayPort
- Four lanes of PCI Express Gen3
- Four lanes of DisplayPort 1.2
- Native USB 3.1 (10Gb/s)
- Up to 15W Power Supply (5V, 3A)

### Storage support

- SATA 6.0 Gb/s transfer rates
- Supports one 2.5-inch SATA HDD/SSD (9.5mm max height)

### Network support

- Dual Gigabit (10/100/1000Mbps) LAN
- IEEE 802.3 compatible

### Wi-Fi support

- 802.11ac Wi-Fi (dual-band)
- Bluetooth 4.2

### Audio

- Digital 8 Channel Audio (LPCM/bitstream via HDMI)

### Operating System support

- Windows 10 64bit

### Product Dimensions

- 146.4mm x 126.5mm x 60.5mm

## Safety information

Your ZOTAC ZBOX nano is designed and tested to meet the latest standards of safety for information technology equipment. However, to ensure your safety, it is important that you read the following safety instructions.

### Setting up your system

- ❖ Read and follow all instructions in the documentation before operating your system.
- ❖ Do not use this product near water or a heat source such as a radiator.
- ❖ Set up the system on a stable surface with the provided stand. Never use the system alone without the stand.
- ❖ Openings on the chassis are for ventilation. Do not block or cover these openings. Make sure you leave plenty of space around the system for ventilation. Never insert objects of any kind into the ventilation openings.
- ❖ Use this product in environments with ambient temperatures between 0°C and 35°C.

☞ If you use an extension cord, please use the UL listed cord and make sure that the total ampere rating of the devices plugged into the extension cord does not exceed its ampere rating.

### Care during use

- ❖ Do not walk on the power cord or allow anything to rest on it.
- ❖ Do not spill water or any other liquids on your system.
- ❖ When the system is turned off, a small amount of electrical current still flows. Always unplug all power, modem, and network cables from the power outlets before cleaning the system.
- ❖ If you encounter the following technical problems with the product, unplug the power cord and contact a qualified service technician or your retailer.
  - The power cord or plug is damaged.
  - Liquid has been spilled into the system.
  - The system does not function properly even if you follow the operating instructions.
  - The system was dropped or the cabinet is damaged.
  - The system performance changes.

## Welcome

Congratulations on your purchase of the ZOTAC ZBOX nano. The following illustration displays the package contents of your new ZOTAC ZBOX nano. If any of the below items is damaged or missing, contact your retailer.

### Package contents

- 1 x ZOTAC ZBOX nano
- 2 x VESA mount bracket
- 1 x AC Adapter
- 1 x Power Cord
- 1 x Thunderbolt 3-to-DP Adapter
- 1 x Antenna
- 1 x Support DVD
- 1 x USB flash drive with OS drivers
- 1 x User Manual & Quick Start Guide
- 1 x Warranty Card



## Getting to know your ZOTAC ZBOX nano

### Front view



Refer to the diagram below to identify the components on the front of the ZBOX nano

**1. Power button**

The power button turns the system ON and OFF.

**2. Power LED**

The Power LED is always ON when power is on.

**3. SATA status LED**

The SATA LED blinks when data is being written onto or read from the SATA.

**4. WiFi LED**

The WiFi LED is always ON when WiFi is activated.

**5. Memory card reader**

The built-in memory card reader reads SD/SDHC/SDXC cards used in devices such as digital cameras, MP3 players, mobile phones and PDAs.

**6. Headphone/Audio Out jack**

The stereo headphone jack (3.5mm) is used to connect the system's audio out signal to amplified speakers or headphones.

**7. Microphone jack**

The microphone jack is designed to connect a microphone for video conferencing, voice narrations or simple audio recordings.

**8. USB 3.1 Type-C ports**

The type-C USB 3.1 port supports the SuperSpeed USB 3.1 devices. Use this port for USB 3.1 devices for maximum performance with USB 3.1 compatible devices.

**9. USB 3.0 port**

The USB 3.0 port supports the SuperSpeed USB 3.0 devices and is backwards compatible with USB 2.0/1.1 devices. Use this port for USB 3.0 devices for maximum performance with USB 3.0 compatible devices.

## Rear view



Refer to the diagram below to identify the components on the back of the system.

### 1. WiFi antenna connector

The WiFi antenna connector supports the included WiFi antenna.

### 2. Thunderbolt 3 port

The Thunderbolt 3 port is compatible with Thunderbolt 3 device such as external graphics, DisplayPort device and USB Type-C device.

### 3. Ethernet ports

The eight-pin RJ-45 LAN port supports standard Ethernet cable for connections to local area networks (LAN) with speeds of 10/100/1000Mbps.

### 4. USB 3.0 ports

The USB 3.0 port supports the SuperSpeed USB 3.0 devices and is backwards compatible with USB 2.0/1.1 devices. Use this port for USB 3.0 devices for maximum performance with USB 3.0 compatible devices.

### 5. HDMI port

The HDMI (High Definition Multimedia Interface) port supports a UHD device such as an LCD TV or monitor to allow viewing on a larger external display.

### 6. Power input (DC19V)

The supplied power adapter converts AC power to DC power for use with this jack. Power supplied through this jack supplies power to the PC. To prevent damage to the PC, always use the supplied power adapter.

⚠ The power adapter may become warm to hot when in use. Do not cover the adapter and keep it away from your body.



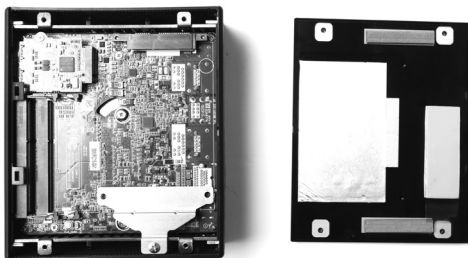
## Customizing the ZOTAC ZBOX nano

Before installing hardware, please follow the instructions below to remove the cover of your ZOTAC ZBOX nano.

1. Remove the four screws securing the bottom cover into place.



2. Remove the bottom cover.



## Installing a memory module

1. Locate the SO-DIMM memory slots and insert a SO-DIMM memory module into the slot at a 45 degree angle.



2. Gently press down on the memory module until it locks into place by the arms of the memory slot.



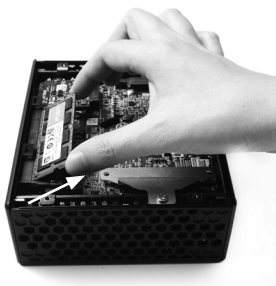
Note: This ZOTAC ZBOX nano accommodates two DDR4 SO-DIMM memory modules. You must install at least one module for the system to function. PLUS models include memory pre-installed.

## Removing the memory module

1. Locate the SO-DIMM memory slot and gently press the two arms securing the memory module outwards, as shown in the image below, to release the memory module.



2. Remove the memory module from the slot at a 45-degree angle.



## Installing a hard disk drive

1. Locate the hard disk bracket, remove the screw, and remove the hard disk bracket as shown in the image below.



2. Install the hard disk bracket onto a 2.5-inch SATA hard disk drive /SSD with 2 screws.



\*a 120GB 2.5" SSD is pre-installed in PLUS model.

3. Insert the hard disk drive /SSD into the socket and gently slide into the connector.



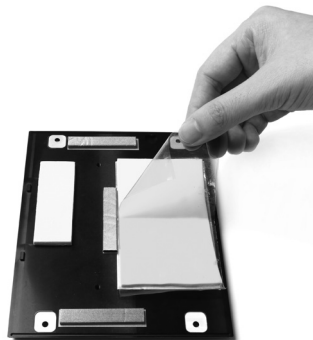
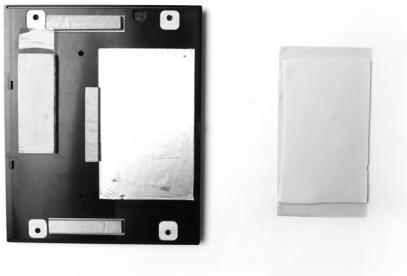
4. Reinstall the screw for the hard disk bracket.



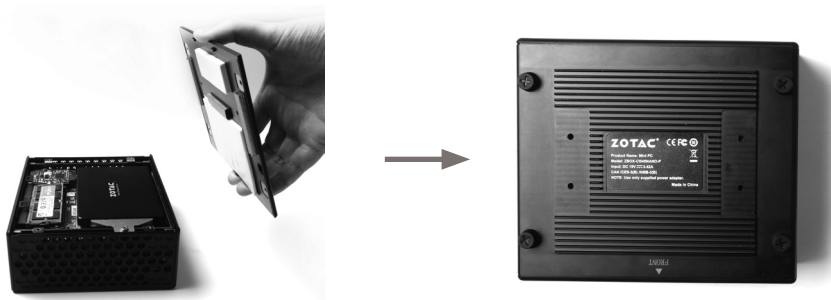
5. If you use 9.5mm hard disk drive, please use the default stuck foil.



***Note: if you use 7mm hard drive or SSD, please stick one more thicker foil on the default foil.***

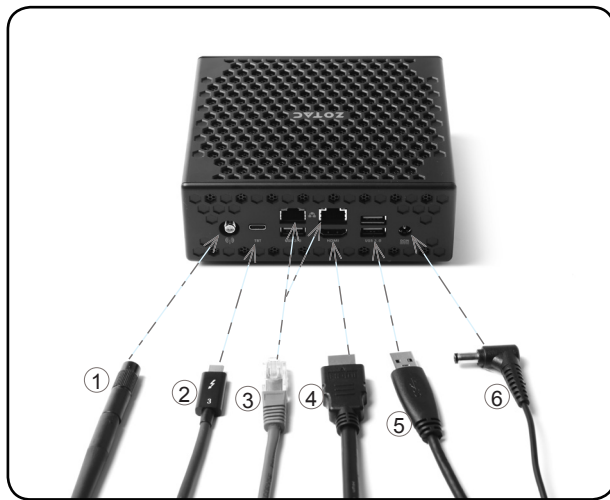


6. Reinstall the bottom cover to the ZBOX nano with four screws.



## Setting up your ZOTAC ZBOX nano

Please connect your peripherals before using your ZOTAC ZBOX nano



### 1. Connecting the WiFi antenna

Connect the WiFi antenna to the WiFi antenna connector.

### 2. Connecting to Thunderbolt 3 device

Connect Thunderbolt 3 device such as external graphics, DisplayPort device and USB Type-C device.

### 3. Connecting to a network device

Connect one end of a network cable to the LAN port on the system rear panel and the other end to a network hub, switch or router.



#### **4. Connecting to an HDMI display**

Connect one end of an HDMI cable to an HDTV or monitor, and the other end to the HDMI port on the system rear panel.

#### **5. Connecting to USB 3.0 devices**

Connect USB 3.0 devices such as external hard disk drives, SSDs and flash drives to the USB 3.0 port on the system rear panel.

#### **6. Connecting the power adapter and turning on the ZBOX nano**

Connect the supplied AC adapter to the DC IN jack on the system rear panel and then press the power switch on the front panel to turn on the system.

☞ When your ZOTAC ZBOX nano is not in use, unplug the power adapter or switch off the AC outlet to conserve power.

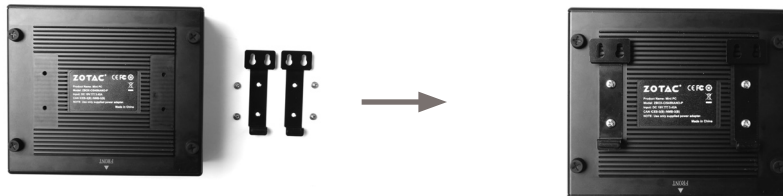
## Positioning the ZOTAC ZBOX nano

- Do not position the ZOTAC ZBOX nano where the ventilation holes are covered. To guarantee proper use, leave 4 inches (10 cm) of spacing in front of the ventilation holes.
- ZOTAC ZBOX nano mini-PC systems provide ample connectivity in a tiny form factor, please choose connectors and cables in appropriate sizes to avoid interference.

## Mounting the ZOTAC ZBOX nano to an LCD monitor

You can attach your ZOTAC ZBOX nano to the back of a VESA75/100 compliant monitor.

1. Secure the VESA mount brackets to the bottom cover using 4 screws.  
Disclaimer: ZOTAC cannot be held liable for damages resulting from an improper installation.



2. Install the VESA mount attachment pegs to the LCD monitor.



3. Align the ZOTAC ZBOX nano mounting holes to the VESA mount attachment pegs, and gently press down to secure the ZBOX nano to the mount.



4. Connect the ZOTAC ZBOX nano to your LCD monitor with an HDMI cable.

## Installing drivers and software

### Installing an operating system

The ZOTAC ZBOX nano does not ship with an operating system preinstalled. The user must install the operating system before the ZOTAC ZBOX nano can be used. The following operating systems are supported:

- Windows 10 64-bit

Follow the instructions below to install an operating system:

1. Attach external DVD drive via USB 3.0 ports.
2. Insert disk for operating system (Windows or Linux).
3. Wait for the ZOTAC ZBOX nano to boot from the disk.
4. Follow the onscreen directions to install the operating system.
5. Install system drivers to gain full functionality of the ZOTAC ZBOX nano hardware and features.

### Installing system drivers

Before you can use the full features of the ZOTAC ZBOX nano, the system drivers must be installed. The following types of operating systems are supported by the ZOTAC ZBOX nano driver DVD and USB flash drive:

- Windows 10 64-bit

Follow the instructions below to install the system drivers:

1. Insert the ZOTAC ZBOX nano driver DVD or driver USB flash drive. If autorun is enabled, the driver installation main menu will show up automatically. If autorun is disabled, you may click the file Launch.EXE to bring up the driver installation main menu.
2. The following drivers are available on the DVD and USB flash drive:
  - Intel Chipset Driver



- HDA Sound Driver
- Intel Graphics Driver
- Realtek Ethernet PCI-E Driver
- Intel Ethernet PCI-E Driver
- Wireless Network Driver
- Intel Management Engine
- Thunderbolt
- Bluetooth Driver
- MassStorage Driver
- Asmedia USB Controller
- USB Charger (optional)

**Note: If you want to use high-amperage USB charging for smartphones and tablets, please install the driver USB Charger driver.**



Each driver must be installed individually to ensure proper operation of the ZOTAC ZBOX nano.

3. Select the driver you want to install. The driver installer should launch.
4. Follow the onscreen instructions to install the drivers.
5. Restart the system.

## Using your ZOTAC ZBOX nano

### Configuring a wireless connection

Please follow the instructions below to connect to a wireless network:

1. Double-click the wireless network icon (pic) in the notification area.
2. Select the wireless network you want to connect to from the list and click Connect.
3. After connection is established, you will see “Connected.”

Note 1: For security concerns, Do NOT connect to an unsecured network, otherwise, the transmitted information without encryption might be visible to others.

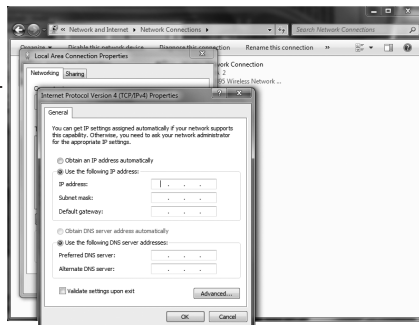
Note 2: Enter the network security key if necessary.



## Configuring a wired connection

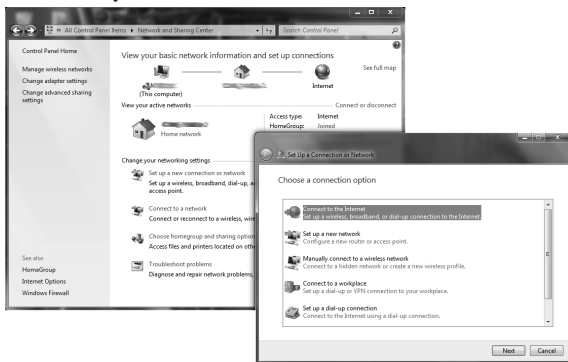
### Using a static IP

1. Right-click the network icon in the notification area and select "Open Network Connections".
2. Right-click "Local Area Connection" and select "Properties".
3. Highlight "Internet Protocol (TCP/IP)" and click "Properties".
4. Select "Use the following IP address".
5. Enter your IP address, subnet mask and Default gateway.
6. Enter the preferred DNS server address if necessary.
7. After entering all of the related values, click "OK" to finish the configuration.



### Using a dynamic IP (PPPoE connection)

1. Repeat Step 1-3 in the previous section.
2. Select "Obtain an IP address automatically" and click "OK".
3. Click "Create a new connection" to start the NEW Connection Wizard.
4. Click "Next".
5. Select "Connect to the Internet" and click "Next".
6. Select "Set up my connection manually".
7. Select your connection type and click "Next".
8. Enter your ISP Name and click "Next".
9. Enter your User name and Password. Click "Next".



10. Click “Finish” to finish the configuration.
11. Enter your user name and password. Click “Connect” to connect to the internet.  
Note: Contact your internet Service Provider (ISP) if you have problems connecting to the network.

## Configuring audio output

Follow the steps below to enable audio output when connecting the ZOTAC ZBOX nano to a TV or receiver via HDMI adapter.

1. Access the Sound settings via the system Control Panel.
2. Under Playback devices, click the display device that corresponds with your audio compatible display.
3. Click the “Set Default” button in the lower right hand corner.
4. Click “OK” to exit the setup.

