

**PUSH
YOUR
SKILL**

GO TO →

ZOTAC-CUP.COM

ZOTAC[®]
ZOTAC.COM

**THE ORIGINAL
MINI PC**



facebook.com/zotac



twitter.com/zotac



youtube.com/zotacglobal



vimeo.com/zotac



291-MB307-02M9F



**USER'S
MANUAL**

ZOTAC
ZBOX

P1221 pico

P SERIES

ZOTAC ZBOX pico User's Manual



No part of this manual, including the products and software described in it, may be reproduced, transmitted, transcribed, stored in a retrieval system, or translated into any language in any form or by any means, except by the purchaser for backup purposes, without the express written permission of ZOTAC.

Products and corporate names mentioned in this manual may be registered trademarks or copyrights of their respective companies, and are used for identification purposes only. All trademarks are the property of their respective owners.

Every effort has been made to ensure the contents of this manual are correct and up to date. However, the manufacturer makes no guarantee regarding the accuracy of its contents, and reserves the right to make changes without prior notice.

Table of Contents

Product specifications	3
Safety information	4
Setting up your system	4
Care during use	4
Welcome	5
Package contents	5
Port Layout	6
Getting started with Windows 10	8
Using your ZOTAC ZBOX pico	12
Configuring a wireless connection	12
Configuring an Ethernet connection	12
Using a static IP	12
Using a dynamic IP (PPPoE connection)	13
Configuring audio output via an HDMI device	14

Product specifications

Product Dimensions

- 131.38mm x 42.5mm x 17mm

Processor

- Intel Atom x5-Z8300 Processor (quad core, 1.44 GHz up to 1.84 GHz)

Graphics processor

- Intel HD graphics
- HDMI output (max resolution: 1920X1080 @60Hz)

Memory

- 2GB DDR3L-RS1600 memory

USB ports

- One USB 3.0 port

Storage

- 32GB eMMC
- 2-in-1 card reader (Micro SD/SDHC/SDXC)

Networking

- 10/100Mbps Ethernet

Wireless networking

- 802.11ac Wi-Fi
- Bluetooth 4.0

Operating System

- Windows 10 Home (x86) preinstalled

Safety information

Your ZOTAC ZBOX pico is designed and tested to meet the latest standards of safety for information technology equipment. However, to ensure your safety, it is important that you read the following safety instructions.

Setting up your system

- ❖ Read and follow all instructions in the documentation before you operate your system.
- ❖ Do not use this product near water or a heat source such as a radiator.
- ❖ Set up the system on a stable surface.
- ❖ Openings on the chassis are for ventilation. Do not block or cover these openings. Make sure you leave plenty of space around the system for ventilation. Never insert objects of any kind into the ventilation openings.
- ❖ Use this product in environments with ambient temperatures between 0°C and 35°C.

Care during use

- ❖ Do not walk on the power cord or allow anything to rest on it.
- ❖ Do not spill water or any other liquids on your system.
- ❖ When the system is turned off, a small amount of electrical current still flows. Always unplug all power, modem, and network cables from the power outlets before cleaning the system.
- ❖ If you encounter the following technical problems with the product, unplug the power cord and contact a qualified service technician or your retailer.
 - The power cord or plug is damaged.
 - Liquid has been spilled into the system.
 - The system does not function properly even if you follow the operating instructions.
 - The system was dropped or the cabinet is damaged.
 - The system performance changes.

Welcome

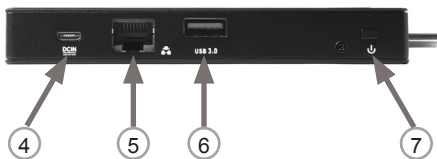
Congratulations on your purchase of the ZOTAC ZBOX pico. The following illustration displays the package contents of your new ZOTAC ZBOX pico. Please contact your retailer if any of the below items are damaged or missed.

Package contents

- 1 x ZOTAC ZBOX pico
- 1 x AC adapter
- 1 x HDMI extension cable
- 1 x Antenna
- 1 x OS Recovery DVD (optional)
- 1 x Warranty Card
- 1 x User Manual
- 1 x Quick Start Guide



Port Layout



1. MicroSD memory card slot

The built-in memory card reader supports Micro SD/SDHC/SDXC cards to expand the storage capabilities of the ZOTAC ZBOX pico.

2. Wi-Fi antenna connector

The Wi-Fi antenna connector supports the included Wi-Fi antenna.

3. HDMI port

The HDMI (High Definition Multimedia Interface) port supports a Full HD 1080p displays such as an HDTV or monitor.

4. Power input (DC 5V, 3A)

The supplied power adapter converts AC power to DC power for use with this jack. Power supplied through this jack supplies power to the mini-PC. To prevent damage to the mini-PC, always use the supplied power adapter.

5. Ethernet port

The eight-pin RJ-45 LAN port supports standard Ethernet cable for connection to a local network.

6. USB 3.0 port

The USB 3.0 port supports SuperSpeed USB 3.0 devices and is backwards compatible with USB 2.0/1.1 devices. Use this port for USB 3.0 devices for maximum performance with USB 3.0 compatible devices.

7. Power button

The power button turns the system ON and OFF.

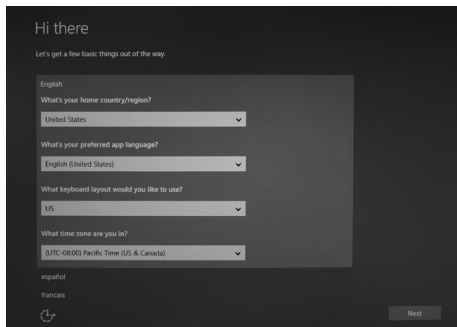
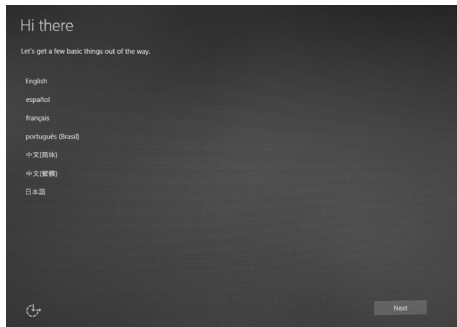
Note 1: The power adapter may get warm or hot when in use. Do not cover the adapter and keep it away from your body.

Note 2: Due to the unique design, some connectors are placed upside down.

Getting started with Windows 10

Please follow the steps below to begin using your ZBOX pico with Windows 10.

1. Power on the system.
2. Connect to the Internet via Ethernet or Wi-Fi.
3. Select the language and region.



4. Read and accept the license terms.

Here's the legal stuff

Last updated July 2015

MICROSOFT SOFTWARE LICENSE TERMS

WINDOWS OPERATING SYSTEM

IF YOU LIVE IN (OR IF YOUR PRINCIPAL PLACE OF BUSINESS IS IN) THE UNITED STATES, PLEASE READ THE BINDING ARBITRATION CLAUSE AND CLASS ACTION WAIVER IN SECTION 10. IT AFFECTS HOW DISPUTES ARE RESOLVED.

Thank you for choosing Microsoft!

Depending on how you obtained the Windows software, this is a license agreement between (i) you and the device manufacturer or software installer that distributes the software with your device, or (ii) you and Microsoft Corporation (or, based on where you live or if a business where your principal place of business is located, one of its affiliates) if you acquired the software from a retailer. Microsoft is the device manufacturer for devices produced by Microsoft or one of its affiliates, and Microsoft is the retailer if you acquired the software directly from Microsoft.

This agreement describes your rights and the conditions upon which you may use the Windows software. You should review the entire agreement, including any supplemental license terms that accompany the software and any linked terms, because all of the terms are important and together create this agreement that applies to you. You can review linked terms by pasting the (aka.ms) link into a browser window.

By accepting this agreement or using the software, you agree to all of these terms, and consent to the transmission of certain information during activation and during your use of the software as per the privacy statement described in Section 3. If you do not accept and comply with these terms, you may not use the software or its features. You may contact the device manufacturer or installer or your retailer if you purchased the software directly, to determine its return policy and return the software or device for a refund or credit under that policy. You must comply with that policy, which might require you to return the software with the entire device on which the software is installed for a refund or credit, if any.

1 Phantom

Accept

5. We recommend using the express settings.

Get going fast

Change these at any time. Select Use Express settings to:

Personalize your speech, typing, and linking input by sending contacts and calendar details, along with other associated input data to Microsoft. Let Microsoft use that info to improve the suggestion and recognition platforms.

Let Windows and apps request your location, including location history, and use your advertising ID to personalize your experiences. Send Microsoft and trusted partners some location data to improve location services.

Help protect you from malicious web content and use page prediction to improve reading, speed up browsing, and make your overall experience better in Windows browsers. Your browsing data will be sent to Microsoft.

Automatically connect to suggested open hotspots and shared networks. Not all networks are secure.

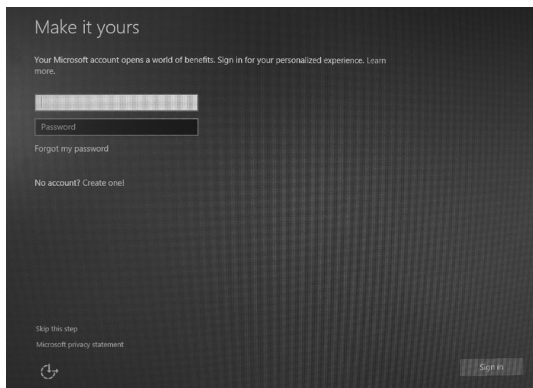
Send error and diagnostic information to Microsoft.

Learn more

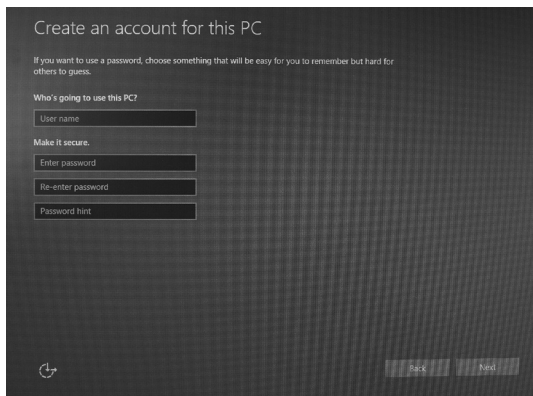
Customize settings

Back Use Express settings


6. Create a Microsoft new account if you don't have one. Otherwise, select "Sign in".



7. Setup your account.



8. Wait for the initial system setup to complete .



We're setting things up for you



Taking care of a few things

Setting up your apps

Using your ZOTAC ZBOX pico

Configuring a wireless connection

Please follow the instructions below to connect to a wireless network:

1. Double-click the wireless network icon (pic) in the notification area.
2. Select the wireless network you want to connect to from the list and click Connect.
3. After connection is established, you will see “Connected.”

Note 1: For security concerns, Do NOT connect to an unsecured network, otherwise, the transmitted information without encryption might be visible to others.

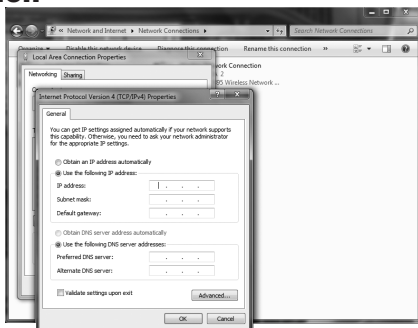
Note 2: Enter the network security key if necessary.



Configuring an Ethernet connection

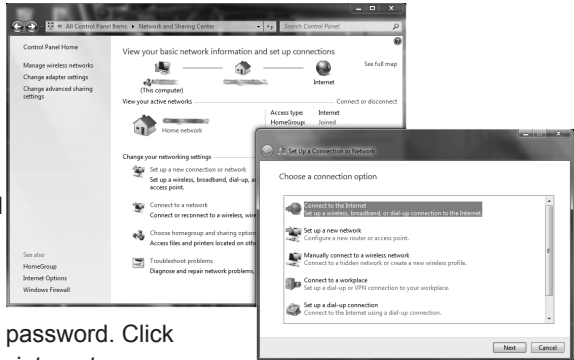
Using a static IP

1. Right-click the network icon in the notification area and select “Open Network Connections”.
2. Right-click “Local Area Connection” and select “Properties”.
3. Highlight “Internet Protocol (TCP/IP)” and click “Properties”.
4. Select “Use the following IP address”.
5. Enter your IP address, subnet mask and Default gateway.
6. Enter the preferred DNS server address if necessary.
7. After entering all of the related values, click “OK” to finish the configuration.



Using a dynamic IP (PPPoE connection)

1. Repeat Step 1-3 in the previous section.
2. Select “Obtain an IP address automatically” and click “OK”.
3. Click “Create a new connection” to start the NEW Connection Wizard.
4. Click “Next”.
5. Select “Connect to the Internet” and click “Next”.
6. Select “Set up my connection manually”.
7. Select your connection type and click “Next”.
8. Enter your ISP Name and click “Next”.
9. Enter your User name and Password. Click “Next”.
10. Click “Finish” to finish the configuration.
11. Enter your user name and password. Click “Connect” to connect to the internet.



Note: Contact your internet Service Provider (ISP) if you have problems connecting to the network.

Configuring audio output via an HDMI device

Follow the steps below to enable audio output via HDMI when connecting the ZOTAC ZBOX pico to a TV or receiver via HDMI.

1. Access the Sound settings via the system Control Panel.
2. Under Playback devices, click the display device that corresponds with your HDMI audio compatible display
3. Click the “Set Default” button in the lower right hand corner.
4. Click “OK” to exit the setup.

