

ZOTAC ZBOX

User's Manual



No part of this manual, including the products and software described in it, may be reproduced, transmitted, transcribed, stored in a retrieval system, or translated into any language in any form or by any means, except documentation kept by the purchaser for backup purposes, without the express written permission of ZOTAC.

Products and corporate names mentioned in this manual may not be registered trademarks or copyrights of their respective companies, and are used for identification purposes only. All trademarks are the property of their respective owners.

Every effort has been made to ensure that the contents of this manual are correct and up to date. However, the manufacturer makes no guarantee regarding the accuracy of its contents, and reserves the right to make changes without prior notice.

CAUTION:

Risk of explosion if the battery is replaced with an incorrect type. Batteries should be recycled where possible. Disposal of used batteries must be in accordance with local environmental regulations.

Table of Contents

Product specifications	3
Safety information	4
Setting up your system	4
Care during use	4
Welcome	5
Package contents	5
Getting to know your ZOTAC ZBOX	6
Front view	6
Rear view	7
BIOS settings of specific functions	8
How to disable the ring LED indicator	8
How to disable the integrated IR receiver	10
Installing hardware inside the ZOTAC ZBOX	12
Installing a memory module	13
Removing a memory module	14
Installing a hard disk drive	15
Installing an M.2 SSD	17
Setting up your ZOTAC ZBOX	19
Positioning your ZOTAC ZBOX	21
Installing the stand	21
Attaching your ZOTAC ZBOX to a monitor	22
Installing drivers and software	23
Installing an operating system	23
Installing system drivers	23
Using your ZOTAC ZBOX	24
Configuring a wireless connection	24
Configuring a wired connection	25
Using a static IP	25
Using a dynamic IP (PPPoE connection)	25
Configuring audio output	26
Installing Windows 7	27
Intel Rapid Storage Technology	30
Introduction	30
Setting up Intel Rapid Storage Technology	30

Product specifications

- ❑ **Chipset**
 - ❖ Intel H170 chipset
- ❑ **Microprocessor support**
 - ❖ Intel Core i7-6700T, quad core 2.8 GHz (8 M Cache, up to 3.6 GHz) for ZBOX-MI571 series
 - ❖ Intel Core i5-6400T, quad core 2.2 GHz (6 M Cache, up to 2.8 GHz) for ZBOX-MI551 series
- ❑ **Operating systems:**
 - ❖ Supports Windows 7 / 8.1 / 10 32/64-bit
- ❑ **System Memory support**
 - ❖ Two DDR3L-1600/1333 SODIMM slots
 - ❖ Up to 16 GB of memory
- ❑ **USB Ports**
 - ❖ One USB 3.1 Type-C port, one USB 3.1 port (from SD/USB 3.1 Combo)
 - ❖ Two USB 3.0 ports, one USB 2.0 port
- ❑ **Onboard Serial ATA**
 - ❖ SATA 6.0 Gb/s transfer rates
 - ❖ Supports one 2.5-inch SATA HDD or SSD (max 9.5mm height)
- ❑ **Expansion slot**
 - ❖ One M.2 SATA SSD slot (22/42,22/60,22/80)
- ❑ **Onboard Dual LAN**
 - ❖ Supports 10/100/1000 Mbps operation
 - ❖ Supports IEEE 802.3
- ❑ **WiFi/Bluetooth support**
 - ❖ 802.11ac (dual-band)
 - ❖ Bluetooth v4.0
- ❑ **Onboard Audio**
 - ❖ Stereo analog audio output and Microphone input
- ❑ **Onboard Graphics support**
 - ❖ Intel HD Graphics 530
 - ❖ DP 1.2: (max resolution: 3840x2160 @60Hz)
 - ❖ HDMI 1.4: (max resolution: 4096x2160 @24Hz)
- ❑ **Product Size**
 - ❖ 188mm x 188mm x 51mm

Safety information

Your ZOTAC ZBOX is designed and tested to meet the latest standards of safety for information technology equipment. However, to ensure your safety, it is important that you read the following safety instructions.

Setting up your system

- ❖ Read and follow all instructions in the documentation before you operate your system.
- ❖ Do not use this product near water or a heat source such as a radiator.
- ❖ Set up the system on a stable surface with the provided stand. Never use the system alone without the stand.
- ❖ Openings on the chassis are for ventilation. Do not block or cover these openings. Make sure you leave plenty of space around the system for ventilation. Never insert objects of any kind into the ventilation openings.
- ❖ Use this product in environments with ambient temperatures between 0°C and 35°C.

☞ If you use an extension cord, please use the UL listed cord and make sure that the total ampere rating of the devices plugged into the extension cord does not exceed its ampere rating.

Care during use

- ❖ Do not walk on the power cord or allow anything to rest on it.
- ❖ Do not spill water or any other liquids on your system.
- ❖ When the system is turned off, a small amount of electrical current still flows. Always unplug all power, modem, and network cables from the power outlets before cleaning the system.
- ❖ If you encounter the following technical problems with the product, unplug the power cord and contact a qualified service technician or your retailer.
 - The power cord or plug is damaged.
 - Liquid has been spilled into the system.
 - The system does not function properly even if you follow the operating instructions.
 - The system was dropped or the cabinet is damaged.
 - The system performance changes.

Welcome

Congratulations on your purchase of the ZOTAC ZBOX. The following illustration displays the package contents of your new ZOTAC ZBOX. If any of the below items is damaged or missed, contact your retailer.

Package contents

- 1 x ZOTAC ZBOX
- 1 x Stand
- 1 x VESA mount
- 1 x AC Adapter
- 1 x Power Cord
- 1 x Antenna
- 1 x Support DVD
- 1 x USB flash drive with OS drivers
- 1 x User Manual & Warranty Card
- 1 x Quick Start Guide



Getting to know your ZOTAC ZBOX

Front view



Refer to the diagram below to identify the components on the front of the ZBOX

1. Headphone/Audio Out jack

The stereo headphone jack (3.5mm) is used to connect the system's audio output signal to amplified speakers or headphones.

2. Microphone jack

The microphone jack is designed to connect a microphone for video conferencing, voice narrations or simple audio recordings.

3. Combo USB 3.1 port / Memory card slot

The Combo USB 3.1 port / Memory card slot is compatible with USB 3.1 devices or SD/SDHC/SDXC cards used in devices like digital cameras, MP3 players, mobile phones and PDAs.

4. USB 3.1 Type-C port

The type-C USB 3.1 port supports the SuperSpeed USB 3.1 devices and is backwards compatible with USB 3.0/2.0/1.1 devices. Use this port for USB 3.1 devices for maximum performance with USB 3.1 compatible devices.

5. WiFi LED

The WiFi LED blinks when data is being transferred over WiFi.

6. Hard disk LED

The hard disk LED blinks when data is being written onto or read from the hard disk drive.

7. IR receiver

The integrated IR receiver is used to receive signals from the IR remote control.

8. Power switch

The power switch allows powering ON and OFF the system.

Rear view



Refer to the diagram below to identify the components on the back of the system.

1. WiFi antenna connector

The WiFi antenna connector supports the included WiFi antenna.

2. Ethernet ports

The eight-pin RJ-45 LAN port supports standard Ethernet cable for connections to local area networks (LAN) with speeds of 10/100/1000Mbps.

3. USB 3.0 ports

The USB 3.0 port supports the SuperSpeed USB 3.0 devices and is backwards compatible with USB 2.0/1.1 devices. Use this port for USB 3.0 devices for maximum performance with USB 3.0 compatible devices.

4. DisplayPorts

DisplayPort supports both external (box-to-box) and internal (laptop LCD panel) display connections.

5. HDMI port

The HDMI (High Definition Multimedia Interface) port supports a UHD device such as an LCD TV or monitor to allow viewing on a larger external display.

6. Power input (DC19V)

The supplied power adapter converts AC power to DC power for use with this jack. Power supplied through this jack supplies power to the PC. To prevent damage to the PC, always use the supplied power adapter.

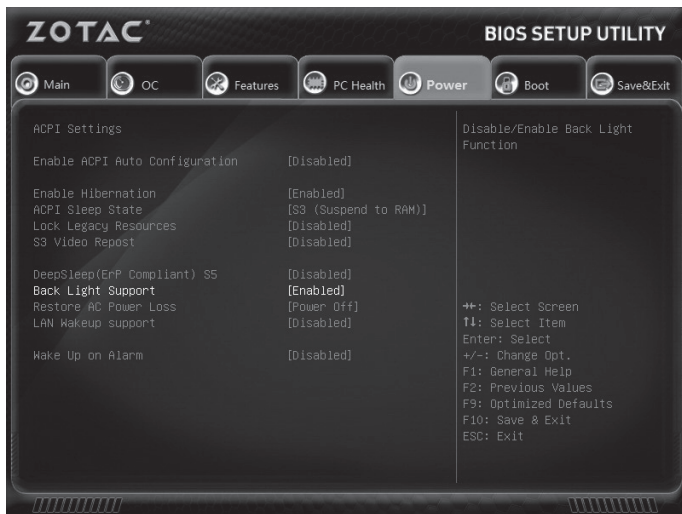
⚠ The power adapter may become warm to hot when in use. Do not cover the adapter and keep it away from your body.

BIOS settings of specific functions

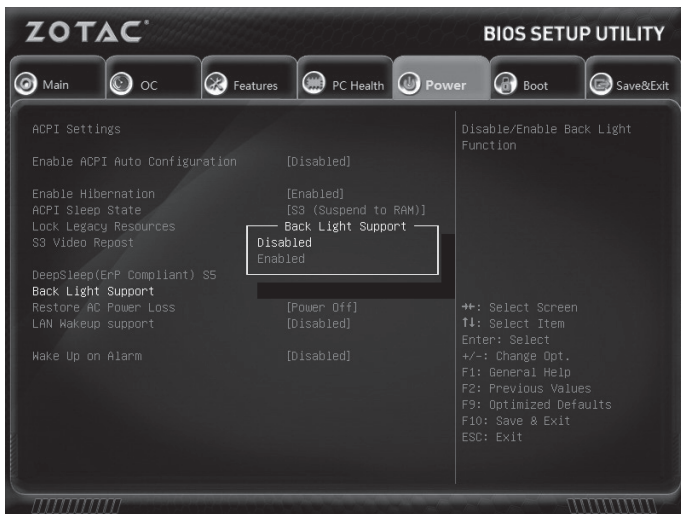
The ZOTAC ZBOX has some specific functions that can be enabled or disabled in the BIOS settings, such as LED indicator, and IR receiver.

How to disable the ring LED indicator

1. Turn on the ZBOX Mini PC and press <Delete> to enter the BIOS SETUP UTILITY.
2. Use the arrow keys to navigate to the **Power** menu and select **Back Light Support**.



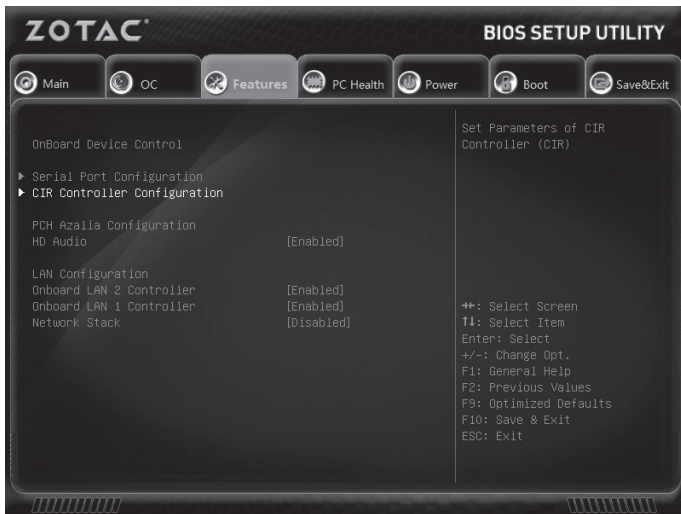
3. Press <Enter> and select **Disabled**.



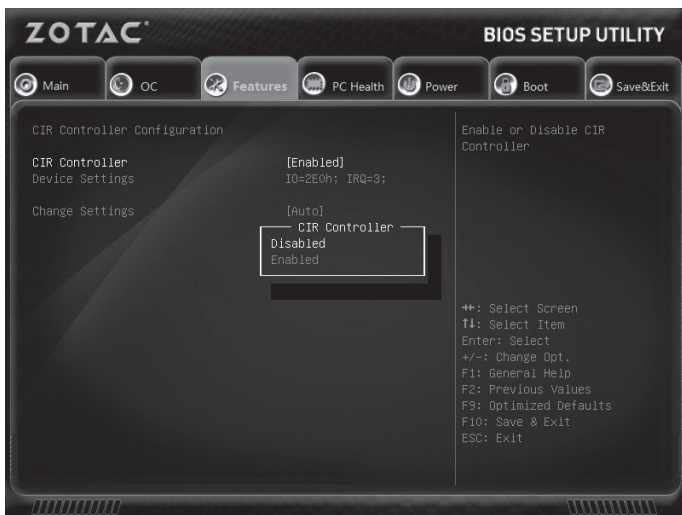
4. Press F10 to save the configuration and exit.

How to disable the integrated IR receiver

1. Use the arrow keys to navigate to **Features > OnBoard Device Control**, and select **CIR Controller Configuration**.



2. Press <Enter> and select **Disabled**.



Enabled: enable the internal IR receiver (default)

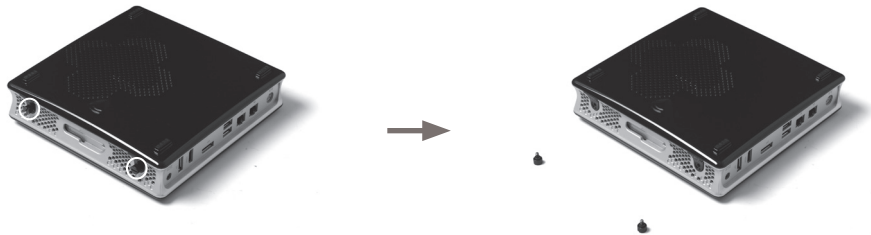
Disabled: disable the internal IR receiver

3. Press F10 to save the configuration and exit.

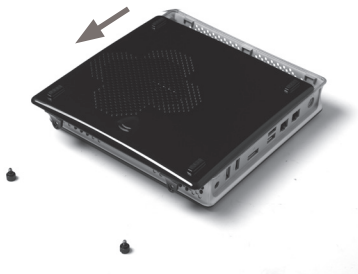
Installing hardware inside the ZOTAC ZBOX

Before installing hardware, please follow the instructions below to remove the cover of your ZOTAC ZBOX.

1. Remove the two rear thumb screws.

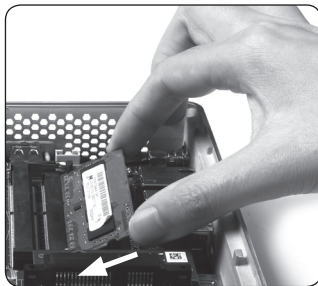


2. Gently remove the cover as shown below.



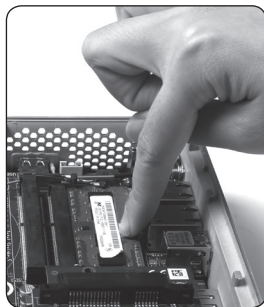
Installing a memory module

1. Locate the SO-DIMM memory slots and insert a SO-DIMM memory module into the slot at a 45 degree angle.



Note: When installing two SO-DIMM memory modules, please insert a module into the lower slot first.

2. Gently press down on the memory module until it locks into place by the arms of the memory slot.

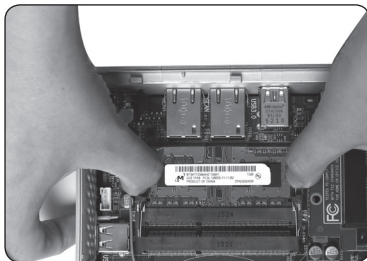


Note:

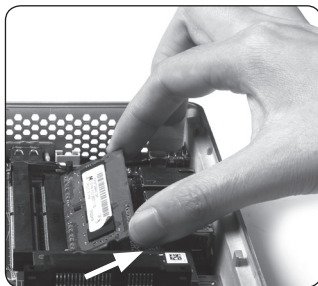
1. This ZOTAC ZBOX accommodates two DDR3L SO-DIMM memory modules. You must install at least one module for the system to function.
2. PLUS models include a memory pre-installed.

Removing a memory module

1. Locate the SO-DIMM memory slot and gently press the two arms securing the memory module outwards, as shown in the image below, to release the memory module.



2. Remove the memory module from the slot at a 45-degree angle.

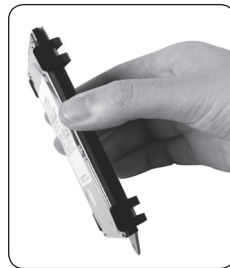
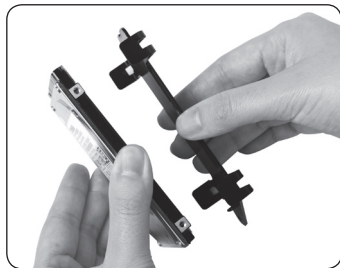


Installing a hard disk drive

1. Locate the 2.5-inch SATA hard disk drive and the hard disk drive bracket.



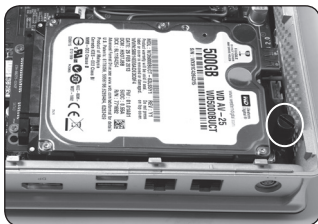
2. Install the hard drive to the hard disk drive bracket.



3. Insert the hard drive into the slot at a 45 degree angle and gently slide into the connector.

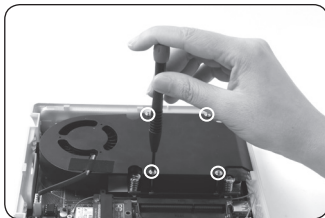


4. Secure the installed drive with a thumb screw.

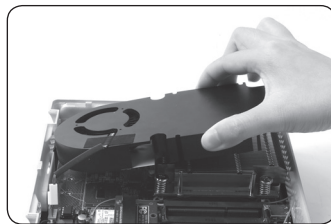
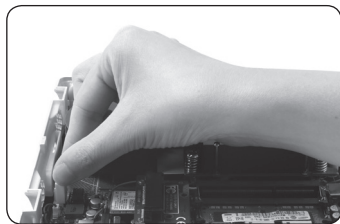


Installing an M.2 SSD

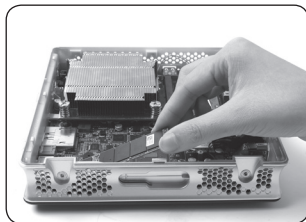
1. Remove the four screws of the fan cover.



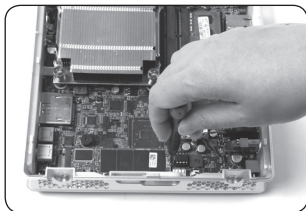
2. Remove the CPUFAN3 connector and the fan cover.



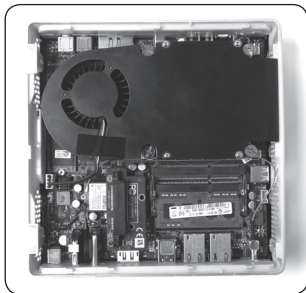
3. Insert the M.2 SSD into the slot at a 45 degree angle and gently slide into the connector.



4. Secure the M.2 SSD with a screw.



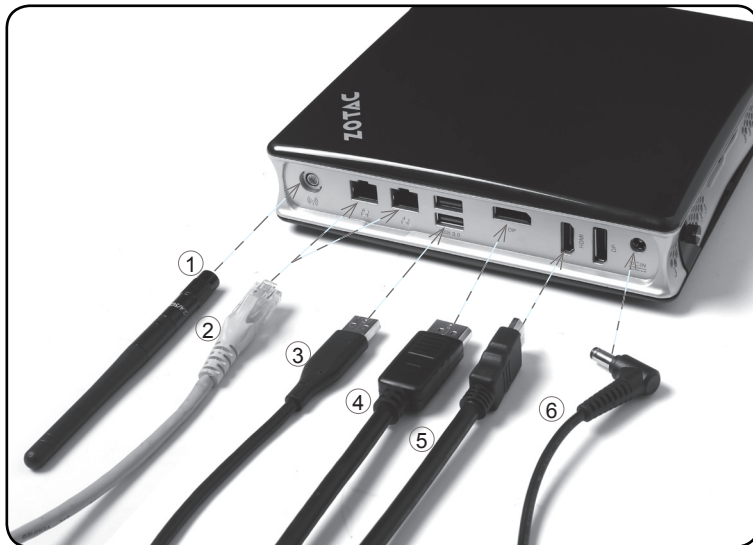
5. Reinstall the fan cover and the CPUFAN3 connector.



*PLUS models include a HDD/SSD pre-installed.

Setting up your ZOTAC ZBOX

Please connect your peripherals before using your ZOTAC ZBOX



1. Connecting the WiFi antenna

Connect the WiFi antenna to the WiFi antenna connector.

2. Connecting to a network

Connect one end of a network cable to the LAN port on the system rear panel and the other end to a network router, hub or switch.

3. Connecting to USB 3.0 devices

Connect USB 3.0 devices such as external hard drives, SSDs and flash drives to the USB 3.0 port.

4. Connecting a DisplayPort display

Connect the DisplayPort connector to the DP port of the monitor or display.

5. Connecting to an HDMI display

Connect one end of an HDMI cable to an HDTV or monitor, and the other end to the HDMI port on the system rear panel.

6. Connecting the power adapter and turning on the ZBOX

Connect the supplied AC adapter to the DC IN jack on the system rear panel and then press the power switch on the front panel to turn on the system.

☞ When your ZOTAC ZBOX is not in use, unplug the power adapter or switch off the AC outlet to conserve power.

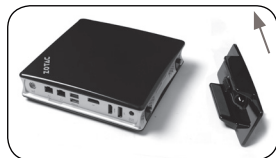
Positioning your ZOTAC ZBOX

- ☞ Do not position the ZOTAC ZBOX where the ventilation holes are covered. To guarantee proper use, leave 4 inches (10 cm) spacing in front of the ventilation holes.
- ☞ ZOTAC Mini PC systems provide ample connectivity in a compact form factor, please choose connectors and cables in appropriate sizes to avoid interference.

Installing the stand

Position your ZOTAC ZBOX upright with the supplied stand. To do so :

1. Locate the key hole on the bottom of the ZOTAC ZBOX.
 2. Align the stand key to the ZBOX key hole and slide the stand forward to lock into place..
- ☞ Do not place your ZOTAC ZBOX on the desktop without the stand.



Attaching your ZOTAC ZBOX to a monitor

You can also attach your ZOTAC ZBOX to the back of a monitor. To do so:

1. Secure the VESA mount to your monitor with four screws (HNM/M4x8).
 2. Place your ZOTAC ZBOX on the VESA mount noting the correct alignment and snap the ZBOX into place on the mount.
- ☞ To fasten the VESA mount, your monitor must comply with VESA75 Or VESA100 standard.
 - ☞ Mechanical Loading Stability - Please ensure the monitor rests on a stable platform before attaching ZOTAC ZBOX to prevent damage or injuries from a fall or drop.
 - ☞ If the total weight of your monitor and ZOTAC ZBOX is over 7kg, the system may be unstable.



Installing drivers and software

Installing an operating system

The ZOTAC ZBOX does not ship with an operating system preinstalled. The user must install the operating system before the ZOTAC ZBOX can be used. The following operating systems are supported:

- Windows 7 / 8.1 / 10 32/64-bit

Follow the instructions below to install an operating system:

1. Attach external DVD drive via USB 3.0 or 2.0 ports.
Note: USB 3.1 port / USB 3.1 Type-C port does not support OS installation.
2. Insert disk for operating system (Windows or Linux).
3. Wait for the ZOTAC ZBOX to boot from the disk.
4. Follow the onscreen directions to install the operating system.
5. Install system drivers to gain full functionality of the ZOTAC ZBOX hardware and features.

Installing system drivers

Before you can use the full features of the ZOTAC ZBOX, the system drivers must be installed. The following types of operating systems are supported by the ZOTAC ZBOX driver DVD and USB flash drive:

- Windows 7 / 8.1 / 10 32/64-bit

Follow the instructions below to install the system drivers:

1. Insert the ZOTAC ZBOX driver DVD or driver USB flash drive. If autorun is enabled, the driver installation main menu will show up automatically. If autorun is disabled, you may click the file Launch.EXE to bring up the driver installation main menu.
2. The following drivers are available on the DVD and USB flash drive:
 - Intel Chipset Driver
 - HDA Sound Driver
 - Intel Graphics Driver
 - Ethernet PCI-E Driver
 - Wireless Network Driver
 - Intel Management Engine

- Bluetooth Driver
- CIR Driver
- MassStorage Driver
- USB Charger (optional)

Note: *If you want to use high-amperage USB charging for smartphones and tablets, please install the driver USB Charger driver.*

- Each driver must be installed individually to ensure proper operation of the ZOTAC ZBOX.
- Select the driver you want to install. The driver installer should launch.
- Follow the onscreen instructions to install the drivers.
- Restart the system.



Using your ZOTAC ZBOX

Configuring a wireless connection

Please follow the instructions below to connect to a wireless network:

- Double-click the wireless network icon (pic) in the notification area.
- Select the wireless network you want to connect to from the list and click Connect.
- After connection is established, you will see "Connected."

Note 1: For security concerns, Do NOT connect to an unsecured network, otherwise, the transmitted information without encryption might be visible to others.

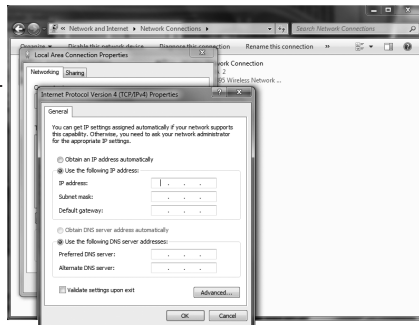
Note 2: Enter the network security key if necessary.



Configuring a wired connection

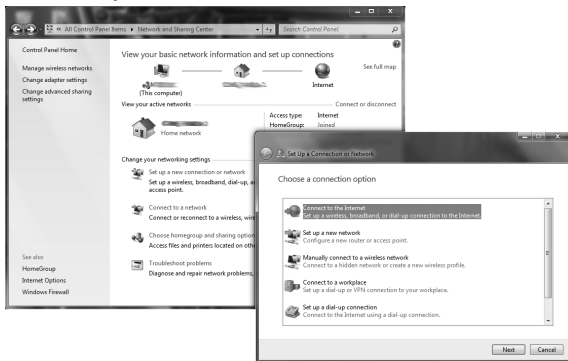
Using a static IP

1. Right-click the network icon in the notification area and select "Open Network Connections".
2. Right-click "Local Area Connection" and select "Properties".
3. Highlight "Internet Protocol (TCP/IP)" and click "Properties".
4. Select "Use the following IP address".
5. Enter your IP address, subnet mask and Default gateway.
6. Enter the preferred DNS server address if necessary.
7. After entering all of the related values, click "OK" to finish the configuration.



Using a dynamic IP (PPPoE connection)

1. Repeat Step 1-3 in the previous section.
2. Select "Obtain an IP address automatically" and click "OK".
3. Click "Create a new connection" to start the NEW Connection Wizard.
4. Click "Next".
5. Select "Connect to the Internet" and click "Next".
6. Select "Set up my connection manually".
7. Select your connection type and click "Next".
8. Enter your ISP Name and click "Next".
9. Enter your User name and Password. Click "Next".

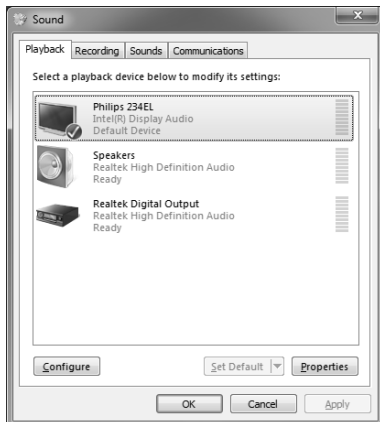


10. Click “Finish” to finish the configuration.
11. Enter your user name and password. Click “Connect” to connect to the internet.
Note: Contact your internet Service Provider (ISP) if you have problems connecting to the network.

Configuring audio output

Follow the steps below to enable audio output when connecting the ZOTAC ZBOX to a TV or receiver via DP/HDMI adapter.

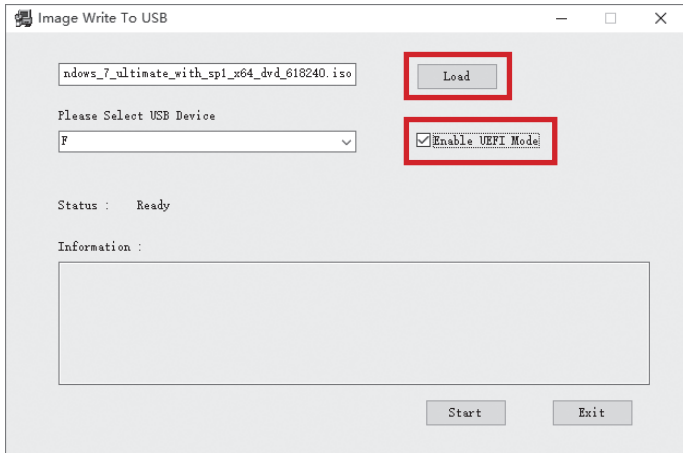
1. Access the Sound settings via the system Control Panel.
2. Under Playback devices, click the display device that corresponds with your audio compatible display.
3. Click the “Set Default” button in the lower right hand corner.
4. Click “OK” to exit the setup.



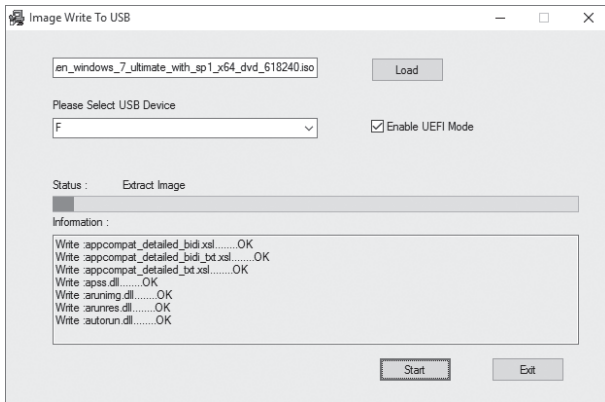
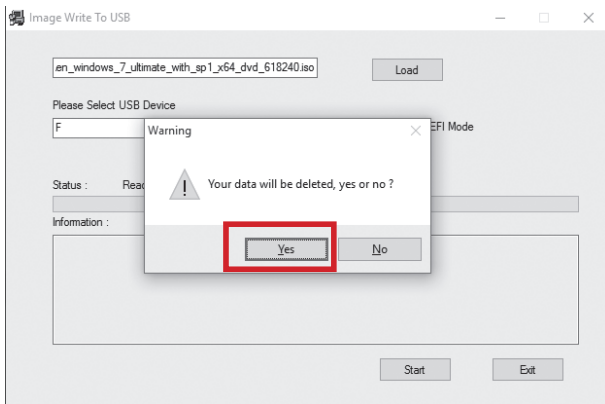
Installing Windows 7

For user who want to install Windows 7, you must run the Win 7 tool to load the image into a USB flash drive (above 4 GB) before its installation. Please follow the instruction as below:

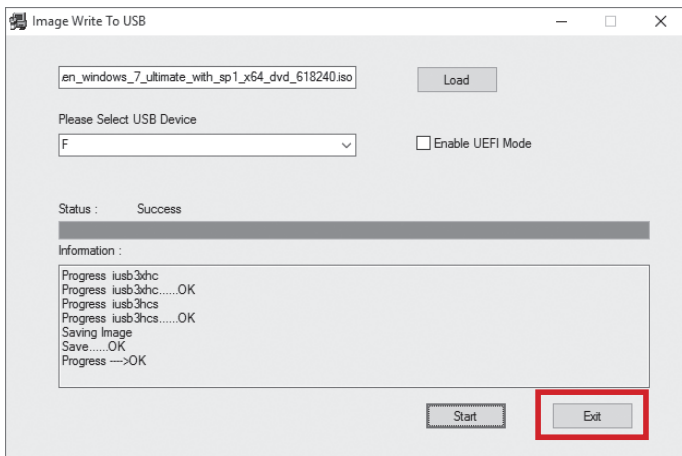
1. Cover the Windows 7 DVD into ISO image or buy the ISO from Microsoft.
2. Load the Win 7 tool at X:\Win7_Tool\Image To USB.exe (X: your driver disk letter).
If you want to use UEFI mode, check the box before "Enable UEFI Mode".



2. When the warning “Your data will be deleted, yes or no?” displays, click “Yes”.



3. When load completed, click “Exit”.



4. Plug the USB flash drive into ZOTAC ZBOX, power ON and install the Win7 from it.

Intel Rapid Storage Technology

Introduction

Intel Rapid Storage Technology is a Windows-based application that provides improved performance and reliability for systems equipped with SATA disks for desktop, mobile, and server platforms. When using one or multiple SATA disks, you can take advantage of enhanced performance and lower power consumption. When using more than one disk, you can increase protection against data loss in the event of disk failure.

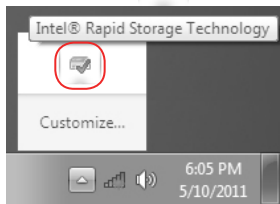
Note: 1. Please confirm that the driver: Intel Rapid Storage Technology has been installed completely before you set the following configuration.

2. There must be an SSD as cache volume to set Intel Rapid Storage.

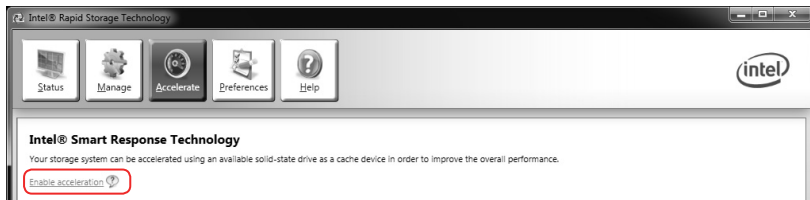
Setting up Intel Rapid Storage Technology

Follow the instructions below to set Intel Rapid Storage.

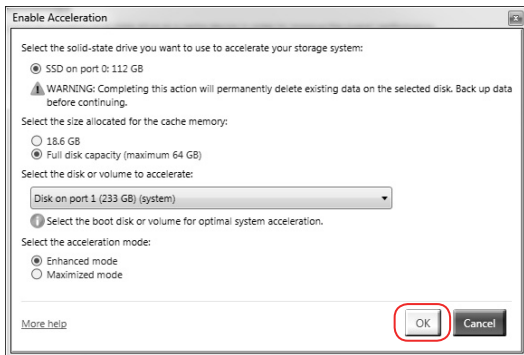
1. Click the icon  in the lower right corner of the desktop.



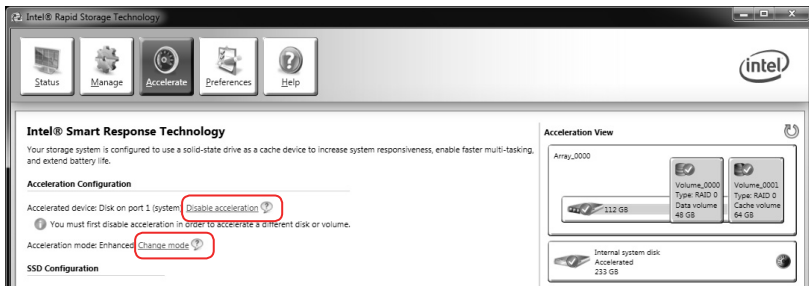
2. Enter the “**Accelerate**” menu, and click “**Enable acceleration**”.



3. When the window “**Enable Acceleration**” displays, select the cache memory size and the acceleration mode, and click “**OK**” to accelerate the storage.



- If you want to change the setting, click **“Disable acceleration”** to disable the acceleration, or click **“Change mode”** to change the acceleration mode.



- If you want to reset cache to available, click **“Reset to available”**.

