

ZOTAC ZBOX

User's Manual



No part of this manual, including the products and software described in it, may be reproduced, transmitted, transcribed, stored in a retrieval system, or translated into any language in any form or by any means, except documentation kept by the purchaser for backup purposes, without the express written permission of ZOTAC.

Products and corporate names mentioned in this manual may not be registered trademarks or copyrights of their respective companies, and are used for identification purposes only. All trademarks are the property of their respective owners.

Every effort has been made to ensure that the contents of this manual are correct and up to date. However, the manufacturer makes no guarantee regarding the accuracy of its contents, and reserves the right to make changes without prior notice.

CAUTION:

Risk of explosion if the battery is replaced with an incorrect type. Batteries should be recycled where possible. Disposal of used batteries must be in accordance with local environmental regulations.

Table of Contents

Product Specifications	3
Safety information	4
Setting up your system	4
Care during use	4
Welcome	5
Package contents	5
Getting to know your ZOTAC ZBOX	6
Front view	6
Rear view	7
Installing Hardware inside ZOTAC ZBOX	8
Installing a memory module	8
Removing the memory module	10
Installing a hard disk drive	11
Setting up your ZOTAC ZBOX	12
Positioning your ZOTAC ZBOX	13
Installing the stand	13
Installing drivers and software	14
Installing an operating system	14
Installing system drivers	14
Using your ZOTAC ZBOX	15
Configuring wired connection	15
Using a static IP	15
Using a dynamic IP (PPPoE connection)	16
Configuring audio output via an HDMI /DP device	16
Installing Windows 7 64-bit	17

Product Specifications

- ❑ **Microprocessor support**
 - ❖ Intel® Celeron® Processor N3060 (Dual-core, 1.6 GHz, 2M Cache, up to 2.48 GHz)
- ❑ **Operating systems:**
 - ❖ Windows 7 64bit, Windows 8.1 64bit, Windows 10 32bit/64bit
- ❑ **System Memory support**
 - ❖ Two 204-pin SO-DIMMs DDR3L-1600
 - ❖ Up to 8 GB of memory
- ❑ **USB Ports**
 - ❖ Three USB 3.0 ports (one SD card/ USB 3.0 Combo, two rear panel ports)
 - ❖ One USB 3.0 Type-C port
 - ❖ One USB 2.0 port
- ❑ **Onboard Serial ATA**
 - ❖ SATA 6.0 Gb/s transfer rates
 - ❖ Supports one 2.5-inch SATA HDD or SSD (support the device with max 9.5mm height)
- ❑ **Onboard GLAN**
 - ❖ Supports 10/100/1000 Mbps operation
 - ❖ Supports IEEE 802.3
- ❑ **Onboard Audio**
 - ❖ Stereo analog audio output and Microphone input
 - ❖ One Optical SPDIF support
 - ❖ HDMI 1.4b or DP 1.2 digital output
- ❑ **Green Function**
 - ❖ Supports ACPI (Advanced Configuration and Power Interface)
- ❑ **Onboard Graphics support**
 - ❖ Integrated Intel® HD Graphics
 - ❖ HDMI 1.4b (max resolution: 3840x2160 @30Hz)
 - ❖ DP 1.2 (max resolution: 3840x2160 @30Hz)
 - ❖ VGA (max resolution: 1920x1080 @60Hz)
- ❑ **Product Size**
 - ❖ 188mm x 188mm x 44mm

Safety information

Your ZOTAC ZBOX is designed and tested to meet the latest standards of safety for information technology equipment. However, to ensure your safety, it is important that you read the following safety instructions.

Setting up your system

- ❖ Read and follow all instructions in the documentation before you operate your system.
 - ❖ Do not use this product near water or a heat source such as a radiator.
 - ❖ Set up the system on a stable surface with the provided stand. Never use the system alone without the stand.
 - ❖ Openings on the chassis are for ventilation. Do not block or cover these openings. Make sure you leave plenty of space around the system for ventilation. Never insert objects of any kind into the ventilation openings.
 - ❖ Use this product in environments with ambient temperatures between 0°C and 35°C.
- ☞ If you use an extension cord, please use the UL listed cord and make sure that the total ampere rating of the devices plugged into the extension cord does not exceed its ampere rating.

Care during use

- ❖ Do not walk on the power cord or allow anything to rest on it.
- ❖ Do not spill water or any other liquids on your system.
- ❖ When the system is turned off, a small amount of electrical current still flows. Always unplug all power, modem, and network cables from the power outlets before cleaning the system.
- ❖ If you encounter the following technical problems with the product, unplug the power cord and contact a qualified service technician or your retailer.
 - The power cord or plug is damaged.
 - Liquid has been spilled into the system.
 - The system does not function properly even if you follow the operating instructions.
 - The system was dropped or the cabinet is damaged.
 - The system performance changes.

Welcome

Congratulations on your purchase of the ZOTAC ZBOX. The following illustration displays the package contents of your new ZOTAC ZBOX. If any of the below items is damaged or missed, contact your retailer.

Package contents

- 1 x ZOTAC ZBOX
- 1 x Stand
- 1 x AC Adapter
- 1 x Power Cord
- 1 x Driver DVD
- 1 x User Manual & Warranty Card
- 1 x Quick Start Guide



Getting to know your ZOTAC ZBOX

Front view



Refer to the diagram below to identify the components on this side of the system

1. Headphone/Audio Out jack

The stereo headphone jack (3.5mm) is used to connect the system's audio out signal to amplified speakers or headphones.

2. Microphone jack

The microphone jack is designed to connect the microphone used for video conferencing, voice narrations or simple audio recordings.

3. Combo USB 3.0 port / Memory card slot

The Combo USB 3.0 port / Memory card slot is compatible with USB 3.0 devices or SD/SDHC/SDXC cards used in devices like digital cameras, MP3 players, mobile phones and PDAs.

4. Type-C USB 3.0 port

The type-C USB 3.0 port supports the SuperSpeed USB 3.0 devices and is backwards compatible with USB 2.0/1.1 devices. Use this port for USB 3.0 devices for maximum performance with USB 3.0 compatible devices.

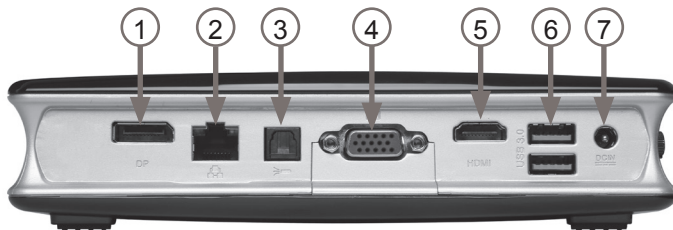
5. Hard disk LED

The hard disk LED blinks when data is being written into or read from the hard disk drive.

6. Power switch

The power switch allows powering ON and OFF the system.

Rear view



Refer to the diagram below to identify the components on this side of the system.

1. DisplayPort

DisplayPort supports both external (box-to-box) and internal (laptop LCD panel) display connections.

2. LAN port

The eight-pin RJ-45 LAN port supports standard Ethernet cables for connection to a local network.

3. Optical (SPDIF OUT) jack

The optical S/PDIF output enables connectivity with digital audio receivers and speakers for crystal clear digital audio and surround sound from compatible soundtracks.

4. VGA port

The VGA port supports connection to analog monitors and displays.

5. HDMI port

The HDMI (High Definition Multimedia Interface) port supports a UHD device such as an LCD TV or monitor to allow viewing on a larger external display.

6. USB 3.0 ports

The USB 3.0 port supports the SuperSpeed USB 3.0 devices and is backwards compatible with USB 2.0/1.1 devices. Use this port for USB 3.0 devices for maximum performance with USB 3.0 compatible devices.

7. Power input (DC19V)

The supplied power adapter converts AC power to DC power for use with this jack. Power supplied through this jack supplies power to the PC. To prevent damage to the PC, always use the supplied power adapter.

☞ The power adapter may become warm to hot when in use. Do not cover the adapter and keep it away from your body.

Installing Hardware inside ZOTAC ZBOX

Before installing hardware, please follow the instructions below to remove the cover of your ZOTAC ZBOX.

1. Unscrew.

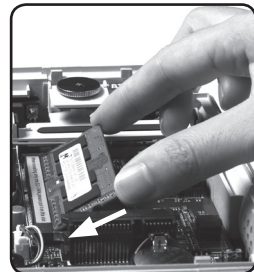
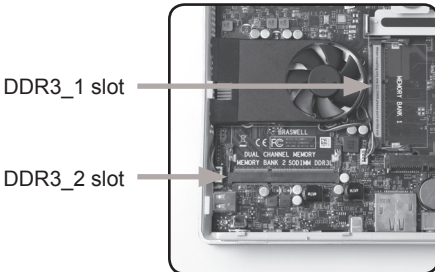


2. Gently remove the cover as the image below.



Installing a memory module

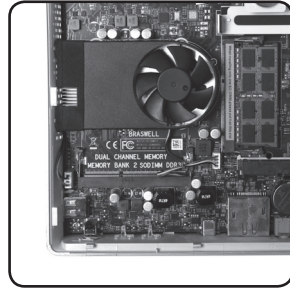
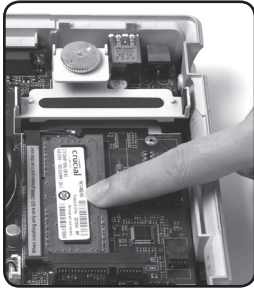
1. Locate the SO-DIMM memory slots and insert a SO-DIMM memory module into the slot at a 45 degree angle.



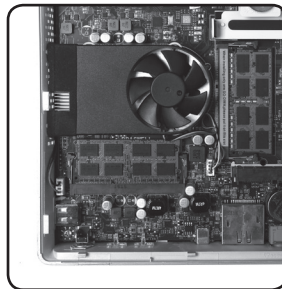
Note:

1. When installing only one SO-DIMM, please install it to DDR3_1 slot.
2. This ZOTAC ZBOX accomodates two DDR3 SO-DIMM memory modules. You must install at least one module in one of the two slots.

2. Gently press down on the memory module until it locks into place by the arms of the memory slot.

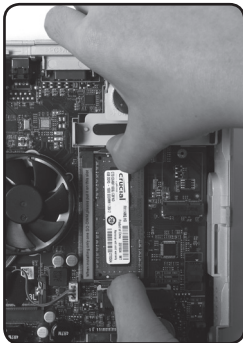


3. If you need, install the second memory module as the above steps.

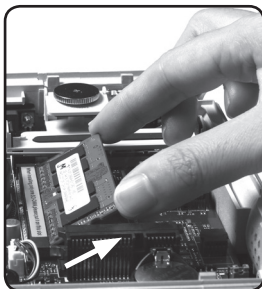


Removing the memory module

1. Locate the SO-DIMM memory slot and gently press the two arms securing the memory module outwards, as shown in the image below, to release the memory module.

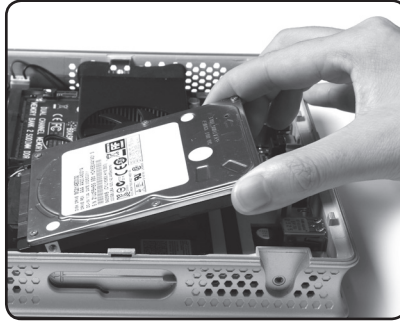


2. Remove the memory module from the slot at a 45-degree angle.



Installing a hard disk drive

1. Insert the hard disk drive into the slot at a 45 degree angle and gently slide into the connector.

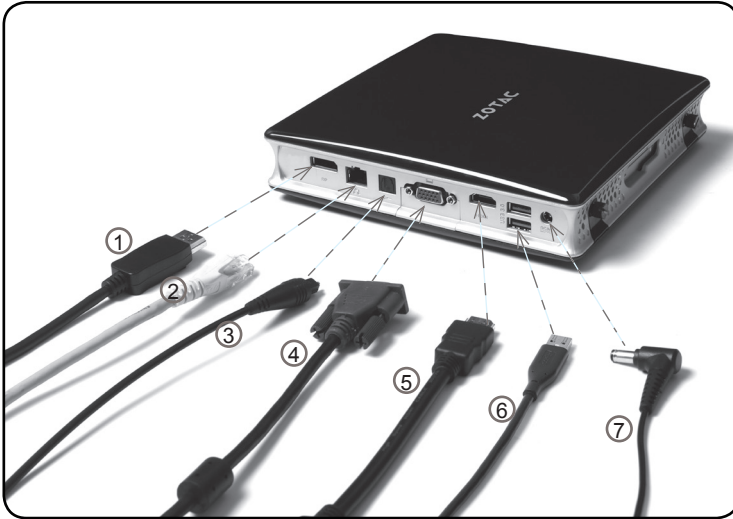


2. Reinstall the screw.



Setting up your ZOTAC ZBOX

You need to connect peripherals before using your ZOTAC ZBOX.



1. Connecting a DisplayPort display

Connect the DisplayPort connector to the DP port.

2. Connecting to a network device

Connect one end of a network cable to the LAN port on the system rear panel and the other End to a hub or switch.

3. Connecting an optical S/PDIF output

Connect a digital audio device via optical S/PDIF output.

4. Connecting a VGA display

Connect the VGA connector to the VGA port.

5. Connecting to an HDMI display

Connect one end of an HDMI cable to the HDMI port on the system rear panel and the other end to a HDMI-compatible display such as an HDTV or monitor.

6. Connecting to USB 3.0 devices

Connect USB 3.0 devices such as external hard disk drives, SSDs and flash drives to the USB 3.0 port on the system rear panel.

7. Turning on the system

Connect the supplied AC adapter to the DC IN jack on the system rear panel and then press the power switch on the front panel to turn on the system.

- ☞ When your ZOTAC ZBOX is not in use, unplug the power adapter or switch off the AC outlet to save on power consumption.

Positioning your ZOTAC ZBOX

- ☞ Do not position the ZOTAC ZBOX where the ventilation holes are covered. To guarantee proper use, leave 4 inches (10 cm) spacing in front of the ventilation holes.
- ☞ ZOTAC Mini PC system provide ample connectivities in tiny space, please choose connectors and cables in appropriate size to avoid interference.

Installing the stand

Erect your ZOTAC ZBOX with the supplied stand. To do so :

1. Locate the screw hole on the bottom of the ZOTAC ZBOX.
 2. Align the stand screw to the PC screw hole and then secure the Stand to the PC with a coin.
- ☞ Do not place your ZOTAC ZBOX on the desktop without the stand.



Installing drivers and software

Installing an operating system

The ZOTAC ZBOX does not ship with an operating system preinstalled. The user must install the operating system before the ZOTAC ZBOX can be used. The following operating systems are supported:

- Windows 7 64bit
- Windows 8.1 64bit
- Windows 10 32bit/64bit

Follow the instructions below to install an operating system:

1. Attach external DVD drive via USB 3.0
2. Insert disk for operating system (Windows or Linux).
3. Wait for the ZOTAC ZBOX to boot from the disk.
4. Follow the onscreen directions to install the operating system.
5. Install system drivers to gain full functionality of the ZOTAC ZBOX hardware and features.

Installing system drivers

Before you can use the full features of the ZOTAC ZBOX, the system drivers must be installed. The following types of operating systems are supported by the ZOTAC ZBOX driver DVD:

- Windows 7 64bit
- Windows 8.1 64bit
- Windows 10 32bit/64bit

Follow the instructions below to install the system drivers:

1. Insert the ZOTAC ZBOX driver DVD. If autorun is enabled, the driver installation main menu will show up automatically. If autorun is disabled, you may click the file Launch.EXE to bring up the driver installation main menu.
2. The following drivers are available on the DVD:
 - Intel Chipset Driver
 - HDA Sound Driver
 - Intel Graphics Driver
 - Ethernet PCI-E Driver
 - Intel Management Engine
 - MassStorage Driver
 - USB Charger (optional)



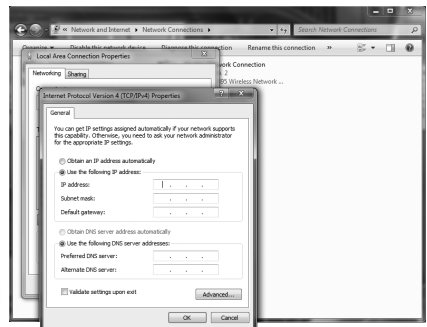
Note: If you want to use USB charger for iPhone/iPad, please install the driver at X:\Utility\Software\Usb Charger\setup.exe (X: your driver disk letter).

- Each driver must be installed individually to ensure proper operation of the ZOTAC ZBOX.
- 3. Select the driver you want to install. The driver installer should launch.
- 4. Follow the onscreen instructions to install the drivers.
- 5. Restart the system.

Using your ZOTAC ZBOX

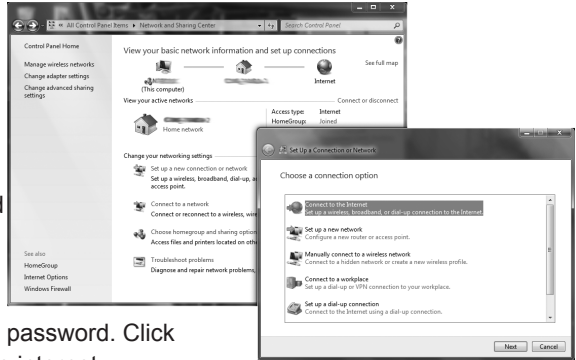
Configuring wired connection Using a static IP

1. Right-click the network icon in the notification area and select “Open Network Connections”.
2. Right-click “Local Area Connection” and select “Properties”.
3. Highlight “Internet Protocol (TCP/IP)” and click “Properties”.
4. Select “Use the following IP address”.
5. Enter your IP address, subnet mask and Default gateway.
6. Enter the preferred DNS server address if necessary.
7. After entering all of the related values, click “OK” to finish the configuration.



Using a dynamic IP (PPPoE connection)

1. Repeat Step 1-3 in the previous section.
2. Select “Obtain an IP address automatically” and click “OK”.
3. Click “Create a new connection” to start the NEW Connection Wizard.
4. Click “Next”.
5. Select “Connect to the Internet” and click “Next”.
6. Select “Set up my connection manually”.
7. Select your connection type and click “Next”.
8. Enter your ISP Name and click “Next”.
9. Enter your User name and Password. Click “Next”.
10. Click “Finish” to finish the configuration.
11. Enter your user name and password. Click “Connect” to connect to the internet.

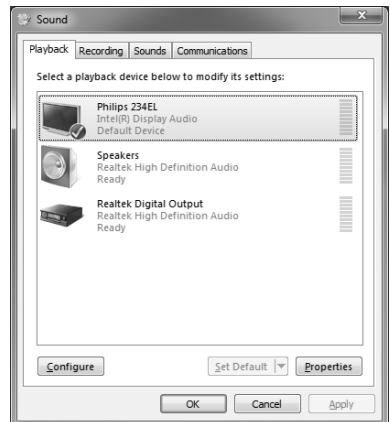


Note: Contact your internet Service Provider (ISP) if you have problems connecting to the network.

Configuring audio output via an HDMI /DP device

Follow the steps below to enable audio output via HDMI /DP when connecting the ZOTAC ZBOX to a TV or receiver via HDMI /DP.

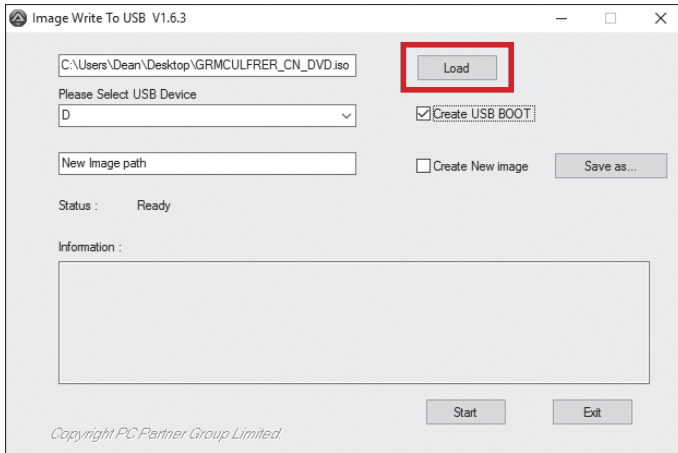
1. Access the Sound settings via the system Control Panel.
2. Under Playback devices, click the display device that corresponds with your HDMI /DP audio compatible display.
3. Click the “Set Default” button in the lower right hand corner.
4. Click “OK” to exit the setup.



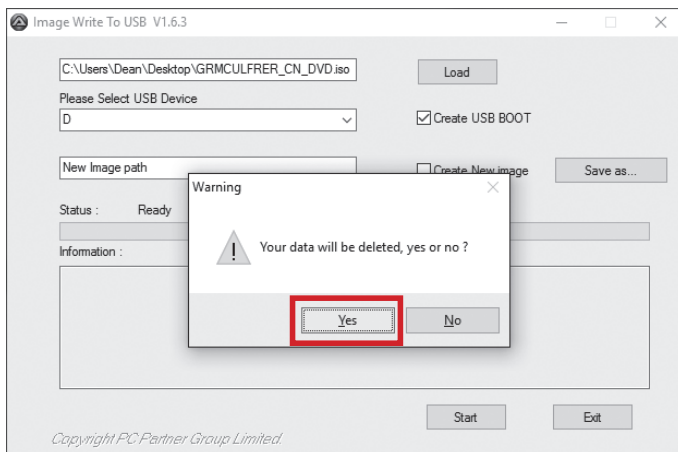
Installing Windows 7 64-bit

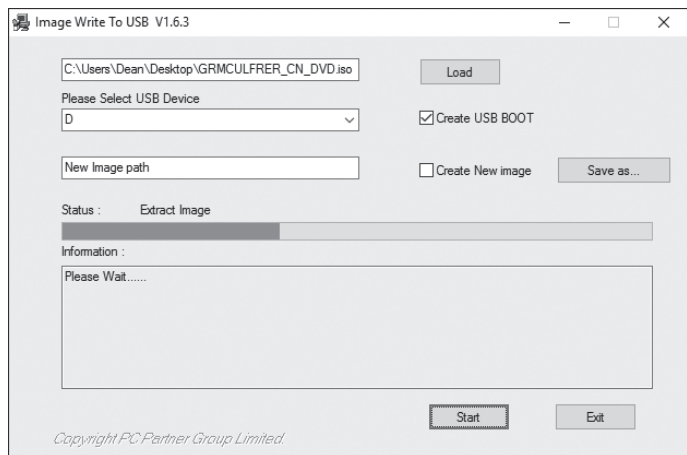
For user who want to install Windows 7 64-bit, you must run the Win 7 tool to load the image into a USB flash drive (above 4GB) before its installation. Please follow the instruction as below:

1. Convert the Windows 7 64-bit DVD into ISO image or buy the ISO from Microsoft.
2. Load the Win 7 tool at X:\Win7_Tool\Image To USB.exe (X: your driver disk letter).
Check the box before “Create USB BOOT”.

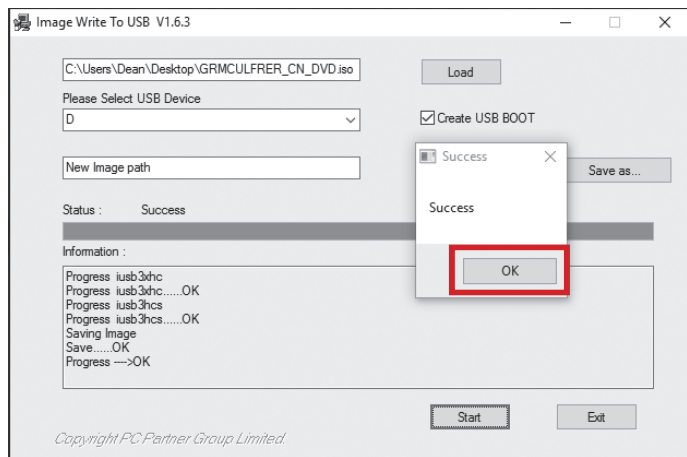


3. When the warning “Your data will be deleted, yes or no?” displays, click “Yes”.





4. When load completed, click “OK”.



5. Plug the USB flash drive into ZOTAC ZBOX, power ON and install the Win7 64-bit from it.

Users also can install Windows 7 64-bit by creating new image. Please choose new path before creating new image.

