

# ZOTAC ZBOX



*USER'S MANUAL*

# ZOTAC ZBOX

## User's Manual



No part of this manual, including the products and software described in it, may be reproduced, transmitted, transcribed, stored in a retrieval system, or translated into any language in any form or by any means, except documentation kept by the purchaser for backup purposes, without the express written permission of ZOTAC.

Products and corporate names mentioned in this manual may not be registered trademarks or copyrights of their respective companies, and are used for identification purposes only. All trademarks are the property of their respective owners.

Every effort has been made to ensure that the contents of this manual are correct and up to date. However, the manufacturer makes no guarantee regarding the accuracy of its contents, and reserves the right to make changes without prior notice.

### **CAUTION:**

Risk of explosion if the battery is replaced with an incorrect type. Batteries should be recycled where possible. Disposal of used batteries must be in accordance with local environmental regulations.

## Table of Contents

<b>Product Specifications</b>	<b>3</b>
<b>Safety information</b>	<b>4</b>
Setting up your system	4
Care during use	4
<b>Welcome</b>	<b>5</b>
Package contents	5
<b>Getting to know your ZOTAC ZBOX</b>	<b>6</b>
Front view	6
Rear view	7
<b>Installing Hardware inside ZOTAC ZBOX</b>	<b>8</b>
Installing a memory module	8
Removing the memory module	9
Installing a hard disk	10
<b>Setting up your ZOTAC ZBOX</b>	<b>11</b>
<b>Positioning your ZOTAC ZBOX</b>	<b>13</b>
Installing the stand	13
Installing your ZOTAC ZBOX to a monitor	13
<b>Installing drivers and software</b>	<b>14</b>
Installing an operating system	14
Installing system drivers	14
<b>Using your ZOTAC ZBOX</b>	<b>15</b>
Configuring a wireless connection	15
Configuring a wired connection	15
Using a static IP	15
Using a dynamic IP (PPPoE connection)	16
Configuring audio output	16

## Product Specifications

### ❑ Product Size

- ❖ 188mm x 188mm x 44mm

### ❑ Microprocessor support

- ❖ Intel® i3-4010U (Dual-core, 1.70 GHz)

### ❑ Operating systems:

- ❖ Supports Windows 7 32bit/64bit and Windows 8 32bit/64bit

### ❑ System Memory support

- ❖ Two 204-pin SO-DIMMs DDR3L-1600/1333 (1.35V)
- ❖ Up to 16 GB of memory

### ❑ USB Ports

- ❖ Four USB 3.0 ports on the back panel
- ❖ Two USB 2.0 ports (one from front, one from top)

### ❑ Onboard Serial ATA

- ❖ SATA 6.0 Gb/s transfer rates
- ❖ Supports one 2.5-inch SATA HDD or SSD (support the device with max 9.5mm height)

### ❑ Onboard LAN

- ❖ Supports 10/100/1000 Mbps operation
- ❖ Supports IEEE 802.3

### ❑ WiFi/Bluetooth support

- ❖ Compliant with IEEE802.11ac standard
- ❖ High speed wireless connection up to 433 Mbps
- ❖ Fully qualified Bluetooth v4.0

### ❑ Onboard Audio

- ❖ 2-channel High-Definition audio
- ❖ Supports Jack-Sensing function

### ❑ Green Function

- ❖ Supports ACPI (Advanced Configuration and Power Interface)


### ❑ Onboard Graphics support

- ❖ Intel® HD Graphics 4400
- ❖ HDMI 1.4a (3840x2160 @30Hz, supports 4K display)
- ❖ DVI-D (1920x1200 @60Hz)

## Safety information

Your ZOTAC ZBOX is designed and tested to meet the latest standards of safety for information technology equipment. However, to ensure your safety, it is important that you read the following safety instructions.

### Setting up your system

- ❖ Read and follow all instructions in the documentation before you operate your system.
  - ❖ Do not use this product near water or a heat source such as a radiator.
  - ❖ Set up the system on a stable surface with the provided stand. Never use the system alone without the stand.
  - ❖ Openings on the chassis are for ventilation. Do not block or cover these openings. Make sure you leave plenty of space around the system for ventilation. Never insert objects of any kind into the ventilation openings.
  - ❖ Use this product in environments with ambient temperatures between 0°C and 35°C.
-  If you use an extension cord, please use the UL listed cord and make sure that the total ampere rating of the devices plugged into the extension cord does not exceed its ampere rating.

### Care during use

- ❖ Do not walk on the power cord or allow anything to rest on it.
- ❖ Do not spill water or any other liquids on your system.
- ❖ When the system is turned off, a small amount of electrical current still flows. Always unplug all power, modem, and network cables from the power outlets before cleaning the system.
- ❖ If you encounter the following technical problems with the product, unplug the power cord and contact a qualified service technician or your retailer.
  - The power cord or plug is damaged.
  - Liquid has been spilled into the system.
  - The system does not function properly even if you follow the operating instructions.
  - The system was dropped or the cabinet is damaged.
  - The system performance changes.

## Welcome

Congratulations on your purchase of the ZOTAC ZBOX. The following illustration displays the package contents of your new ZOTAC ZBOX. If any of the below items is damaged or missed, contact your retailer.

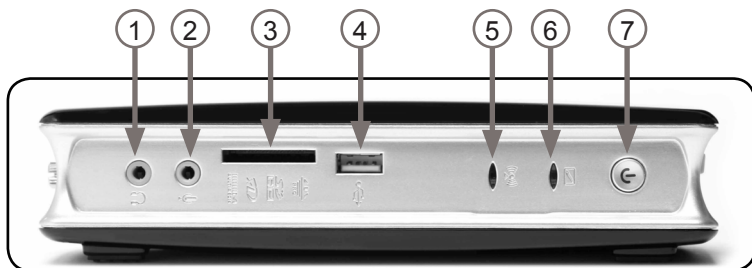
### Package contents

- 1 x ZOTAC ZBOX
- 1 x Stand
- 1 x VESA mount
- 1 x AC Adapter
- 1 x Power Cord
- 1 x WiFi Antenna
- 1 x Support DVD
- 1 x User Manual & Warranty Card
- 1 x Quick Start Guide
- 1 x USB flash drive with OS drivers (optional)



## Getting to know your ZOTAC ZBOX

### Front view



Refer to the diagram below to identify the components on this side of the system

#### 1. Headphone/Audio Out jack

The stereo headphone jack (3.5mm) is used to connect the system's audio out signal to amplified speakers or headphones.

#### 2. Microphone jack

The microphone jack is designed to connect the microphone used for video conferencing, voice narrations or simple audio recordings.

#### 3. Memory card slot

The built-in memory card reader reads MMC/SD/SDHC/MS/MS Pro/XD cards used in devices like digital cameras, MP3 players, mobile phones and PDAs.

#### 4. USB 2.0 port

The USB (Universal Serial Bus) port is compatible with USB devices such as keyboards, mice, cameras and hard disk drives.

#### 5. WiFi LED

The WiFi LED blinks when data is being transferred over WiFi.

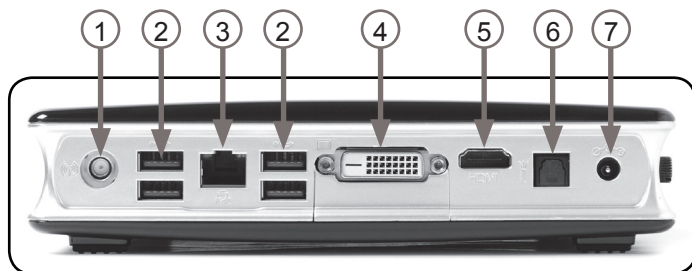
#### 6. Hard disk LED

The hard disk LED blinks when data is being written into or read from the hard disk drive.

#### 7. Power switch

The power switch allows powering ON and OFF the system

## Rear view



Refer to the diagram below to identify the components on this side of the system.

### 1. WiFi antenna connector

The WiFi antenna connector supports WiFi antenna module.

### 2. USB 3.0 ports

The USB 3.0 port supports the SuperSpeed USB 3.0 devices and is backwards compatible with USB 2.0/1.1 devices. Use this port for USB 3.0 devices for maximum performance with USB 3.0 compatible devices.

### 3. LAN port

The eight-pin RJ-45 LAN port supports standard Ethernet cable for connection to a local network.

### 4. DVI-D port

The DVI-D port supports connection to displays.

### 5. HDMI port

The HDMI (High Definition Multimedia Interface) port supports a Full-HD device such as an LCD TV or monitor to allow viewing on a larger external display.

### 6. Optical (SPDIF OUT) jack

Plug an optical cable into this jack for digital audio transfer.

### 7. Power input (DC19V)

The supplied power adapter converts AC power to DC power for use with this jack. Power supplied through this jack supplies power to the PC. To prevent damage to the PC, always use the supplied power adapter.

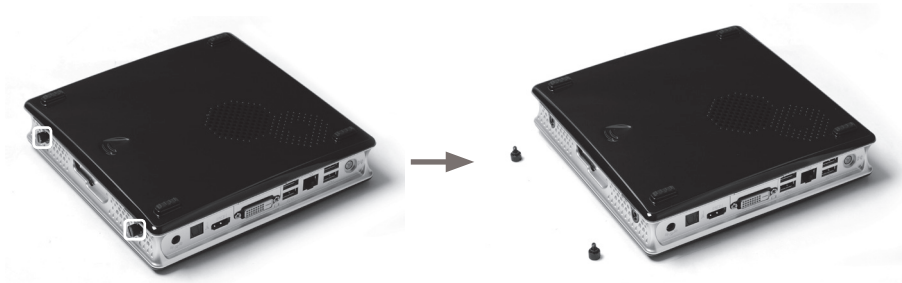
☞ The power adapter may become warm to hot when in use. Do not cover the adapter and keep it away from your body.



## Installing Hardware inside ZOTAC ZBOX

Before installing hardware, please follow the instructions below to remove the cover of your ZOTAC ZBOX.

1. Unscrew.

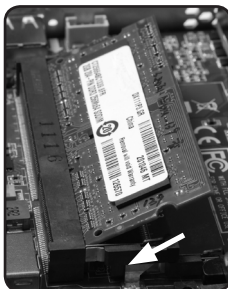


2. Gently remove the cover as the image below.



## Installing a memory module

1. Locate the SO-DIMM memory slots and insert a SO-DIMM memory module into the slot at a 45 degree angle.



Note: When installing two SO-DIMM memory modules, please insert a module into the lower slot first.

2. Gently press down on the memory module until it locks into place by the arms of the memory slot.



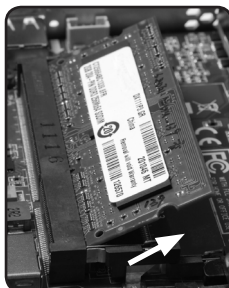
Note: This ZOTAC ZBOX accommodates two DDR3 SO-DIMM memory modules. You must install at least one module in one of the two slots.

## Removing the memory module

1. Locate the SO-DIMM memory slot and gently press the two arms securing the memory module outwards, as shown in the image below, to release the memory module.

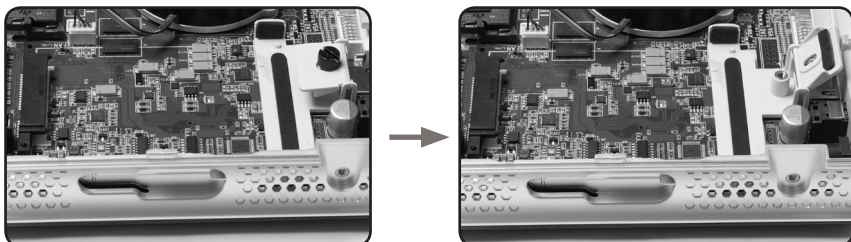


2. Remove the memory module from the slot at a 45-degree angle.



## Installing a hard disk

1. Locate the hard disk bracket and remove the thumb screw.
2. Lift up on the plastic flap.



3. Insert a 2.5-inch SATA hard disk into the bracket at a 45 degree angle and gently slide into the connector.

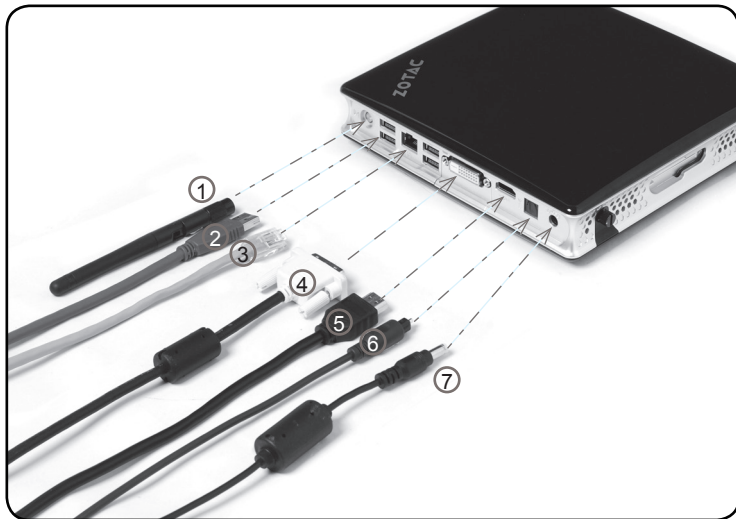


4. Lower the plastic flap and reinstall thumb screw.



## Setting up your ZOTAC ZBOX

You need to connect peripherals before using your ZOTAC ZBOX.



### 1. Connecting a WiFi antenna module

Connect a WiFi antenna module to the WiFi antenna connector.

**Note:** *When using the ZOTAC ZBOX, please be sure that the WiFi antenna module is connected to the WiFi antenna connector for the better performance of the WiFi/Bluetooth.*

### 2. Connecting to USB 3.0 devices

Connect USB 3.0 devices such as external hard drives, SSDs and flash drives to the USB 3.0 port on the system rear panel.

### 3. Connecting to a network device

Connect one end of a network cable to the LAN port on the system rear panel and the other End to a hub or switch.

### 4. Connecting to a DVI-D display

Connect one end of a DVI-D cable to an HDTV or monitor, and the other end to the DVI-D port on the system rear panel.

### **5. Connecting to an HDMI display**

Connect one end of an HDMI cable to the HDMI port on the system rear panel and the other end to a HDMI-compatible display such as an HDTV or monitor.

### **6. Connecting an optical S/PDIF output**

Connect a digital audio device via optical S/PDIF output.

### **7. Connecting the power adapter and turning on the ZBOX**

Connect the supplied AC adapter to the DC IN jack on the system rear panel and then press the power switch on the front panel to turn on the system.

- ☞ When your ZOTAC ZBOX is not in use, unplug the power adapter or switch off the AC outlet to save on power consumption.

## Positioning your ZOTAC ZBOX

- ☞ Do not position the ZOTAC ZBOX where the ventilation holes are covered. To guarantee proper use, leave 4 inches (10 cm) spacing in front of the ventilation holes.
- ☞ ZOTAC mini-PC system provide ample connectivities in tiny space, please choose connectors and cables in appropriate size to avoid interference.

## Installing the stand

Erect your ZOTAC ZBOX with the supplied stand. To do so :

1. Locate the screw hole on the bottom of the ZOTAC ZBOX.
  2. Align the stand screw to the PC screw hole and then secure the Stand to the PC with a coin.
- ☞ Do not place your ZOTAC ZBOX on the desktop without the stand.



## Installing your ZOTAC ZBOX to a monitor

You can also install your ZOTAC ZBOX to the back of a monitor. To do so:

1. Secure the VESA mount to your monitor with four screws (HNM/M4x8).
  2. Place your ZOTAC ZBOX on the VESA mount noting the correct alignment and then secure the PC to the VESA mount with a coin.
- ☞ To fasten the VESA mount, your monitor must comply with VESA75 Or VESA100 standard.
- ☞ Mechanical Loading Stability - Mounting of the equipment on the backside of the monitor should be lay this equipment on a reliable surface when install. A drop or fall could cause injury.
- ☞ If the total weight of your monitor and ZOTAC ZBOX is over 7kg, the system may be unstable.



## Installing drivers and software

### Installing an operating system

The ZOTAC ZBOX does not ship with an operating system preinstalled. The user must install the operating system before the ZOTAC ZBOX can be used. The following operating systems are supported:

- Windows 7
- Windows 8

Follow the instructions below to install an operating system:

1. Attach external DVD drive via USB port.
2. Insert disk for operating system (Windows or Linux).
3. Wait for the ZOTAC ZBOX to boot from the disk.
4. Follow the onscreen directions to install the operating system.
5. Install system drivers to gain full functionality of the ZOTAC ZBOX hardware and features.

### Installing system drivers

Before you can use the full features of the ZOTAC ZBOX, the system drivers must be installed. The following types of operating systems are supported by the ZOTAC ZBOX driver DVD and USB flash drive:

- Windows 7
- Windows 8

Follow the instructions below to install the system drivers:

1. Insert the ZOTAC ZBOX driver DVD or USB flash drive. If autorun is enabled, the driver installation main menu will show up automatically. If autorun is disabled, you may click the file Launch.EXE to bring up the driver installation main menu.
2. The following drivers are available on the DVD and USB flash drive:
  - Intel Chipset Driver
  - HDA Sound Driver
  - Intel Graphics Driver
  - Ethernet PCI-E Driver
  - USB3.0 Controller Driver
  - Intel Management Engine
  - Wireless Network Driver
  - Bluetooth Driver
  - MassStorage Driver
  - USB Charger (optional)



**Note: If you want to use USB charger for iPhone/iPad, please install the driver at X:\Utility\Software\Usb Charger\setup.exe (X: your driver disk letter).**

- ☞ Each driver must be installed individually to ensure proper operation of the ZOTAC ZBOX.
- 3. Select the driver you want to install. The driver installer should launch.
- 4. Follow the onscreen instructions to install the drivers.
- 5. Restart the system.

## Using your ZOTAC ZBOX

### Configuring a wireless connection

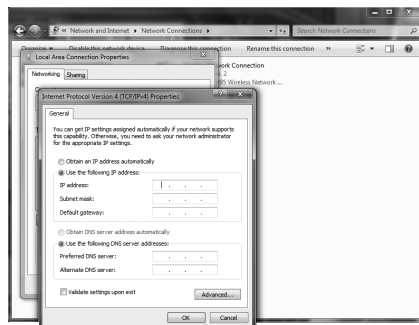
Please follow the instructions below to connect to a wireless network:

1. Double-click the wireless network icon (pic) in the notification area.
2. Select the wireless network you want to connect to from the list and click Connect.
3. After connection is established, you will see “Connected.”  
 Note 1: For security concerns, Do NOT connect to an unsecured network, otherwise, the transmitted information without encryption might be visible to others.  
 Note 2: Enter the network security key if necessary.



### Configuring a wired connection Using a static IP

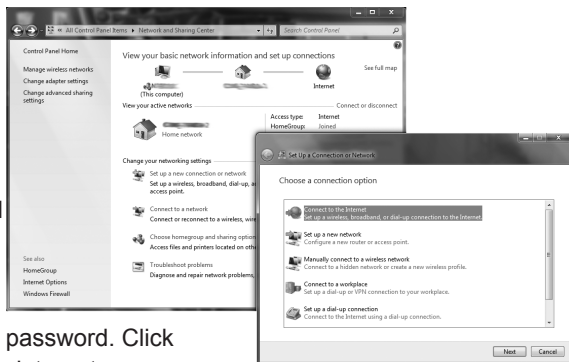
1. Right-click the network icon in the notification area and select “Open Network Connections”.
2. Right-click “Local Area Connection” and select “Properties”.
3. Highlight “Internet Protocol (TCP/IP)” and click “Properties”.
4. Select “Use the following IP address”.
5. Enter your IP address, subnet mask and Default gateway.
6. Enter the preferred DNS server address if necessary.
7. After entering all of the related values, click “OK” to finish the configuration.





## Using a dynamic IP (PPPoE connection)

1. Repeat Step 1-3 in the previous section.
2. Select "Obtain an IP address automatically" and click "OK".
3. Click "Create a new connection" to start the NEW Connection Wizard.
4. Click "Next".
5. Select "Connect to the Internet" and click "Next".
6. Select "Set up my connection manually".
7. Select your connection type and click "Next".
8. Enter your ISP Name and click "Next".
9. Enter your User name and Password. Click "Next".
10. Click "Finish" to finish the configuration.
11. Enter your user name and password. Click "Connect" to connect to the internet.

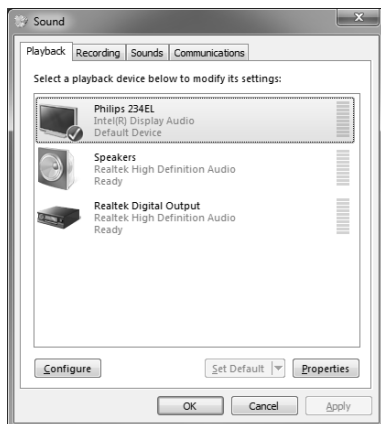


Note: Contact your internet Service Provider (ISP) if you have problems connecting to the network.

## Configuring audio output

Follow the steps below to enable audio output when connecting the ZOTAC ZBOX to a TV or receiver via HDMI.

1. Access the Sound settings via the system Control Panel.
2. Under Playback devices, click the display device that corresponds with your audio compatible display.
3. Click the "Set Default" button in the lower right hand corner.
4. Click "OK" to exit the setup.



# ZOTAC<sup>®</sup>

*It's Time to Play.*

[WWW.ZOTAC.COM](http://WWW.ZOTAC.COM)



291-MB239-02JSF