

**ZBOX**  
nano XS

MULTIMEDIA  
SERIES

# **ZOTAC ZBOX nano XS**

## **User's Manual**



No part of this manual, including the products and software described in it, may be reproduced, transmitted, transcribed, stored in a retrieval system, or translated into any language in any form or by any means, except documentation kept by the purchaser for backup purposes, without the express written permission of ZOTAC.

Products and corporate names mentioned in this manual may not be registered trademarks or copyrights of their respective companies, and are used for identification purposes only. All trademarks are the property of their respective owners.

Every effort has been made to ensure that the contents of this manual are correct and up to date. However, the manufacturer makes no guarantee regarding the accuracy of its contents, and reserves the right to make changes without prior notice.

### **CAUTION:**

Risk of explosion if the battery is replaced with an incorrect type. Batteries should be recycled where possible. Disposal of used batteries must be in accordance with local environmental regulations.

## Table of Contents

<b>Product specifications</b>	<b>3</b>
<b>Safety information</b>	<b>4</b>
Setting up your system	4
Care during use	4
<b>Welcome</b>	<b>5</b>
Package contents	5
<b>Getting to know your ZOTAC ZBOX nano XS</b>	<b>6</b>
Front view	6
Rear view	7
<b>How to disable the ring LED indicator</b>	<b>8</b>
<b>Customizing the ZOTAC ZBOX nano XS</b>	<b>9</b>
Installing a memory module	10
Installing an mSATA	11
Connecting a SPDIF cable	12
<b>Setting up the ZOTAC ZBOX nano XS</b>	<b>13</b>
<b>Positioning the ZOTAC ZBOX nano XS</b>	<b>14</b>
Mounting the ZOTAC ZBOX nano XS to an LCD monitor	14
<b>Installing drivers and software</b>	<b>16</b>
Installing an operating system	16
Installing system drivers	16
<b>Using your ZOTAC ZBOX nano XS</b>	<b>17</b>
Configuring wireless connection	17
Configuring wired connection	17
Using a static IP	17
Using a dynamic IP (PPPoE connection)	18
Configuring audio output via an HDMI device	18

## Product specifications

### Processor

- Intel Core i3-4030U Processor (dual core, 1.9GHz)

### Product Dimensions

- 106mm x 106mm x 45mm

### Onboard graphics

- Intel HD Graphics 4400
- HDMI 1.4a (max resolutions: 4096×2160 @24Hz)
- Mini DP 1.2 (max resolutions: 3840x2160 @30Hz)

### Memory support

- 2 204-pin DDR3L-1600 SO-DIMM slots
- Up to 16 GB of memory

### USB ports

- 2 USB 2.0 ports & 2 USB 3.0 ports

### Storage support

- 1 mSATA 6.0 Gb/s SSD slot

### Network support

- Gigabit (10/100/1000Mbps) LAN
- IEEE 802.3 compatible

### Wi-Fi support

- 802.11ac Wi-Fi (dual-band)
- Bluetooth 4.0

### Audio

- Digital 8 Channel Audio (LPCM/bitstream via HDMI)
- SPDIF output


### Operating System support

- Windows 7 32bit/64bit, Windows 8 32bit/64bit and Windows 8.1 32bit/64bit

## Safety information

Your ZOTAC ZBOX nano XS is designed and tested to meet the latest standards of safety for information technology equipment. However, to ensure your safety, it is important that you read the following safety instructions.

### Setting up your system

- ❖ Read and follow all instructions in the documentation before you operate your system.
- ❖ Do not use this product near water or a heat source such as a radiator.
- ❖ Set up the system on a stable surface with the provided stand. Never use the system alone without the stand.
- ❖ Openings on the chassis are for ventilation. Do not block or cover these openings. Make sure you leave plenty of space around the system for ventilation. Never insert objects of any kind into the ventilation openings.
- ❖ Use this product in environments with ambient temperatures between 0°C and 35°C.
-  If you use an extension cord, please use the UL listed cord and make sure that the total ampere rating of the devices plugged into the extension cord does not exceed its ampere rating.

### Care during use

- ❖ Do not walk on the power cord or allow anything to rest on it.
- ❖ Do not spill water or any other liquids on your system.
- ❖ When the system is turned off, a small amount of electrical current still flows. Always unplug all power, modem, and network cables from the power outlets before cleaning the system.
- ❖ If you encounter the following technical problems with the product, unplug the power cord and contact a qualified service technician or your retailer.
  - The power cord or plug is damaged.
  - Liquid has been spilled into the system.
  - The system does not function properly even if you follow the operating instructions.
  - The system was dropped or the cabinet is damaged.
  - The system performance changes.

## Welcome

Congratulations on your purchase of the ZOTAC ZBOX nano XS mini-PC. The following illustration displays the package contents of your new ZOTAC ZBOX nano XS. Please contact your retailer if any of the below items are damaged or missed.

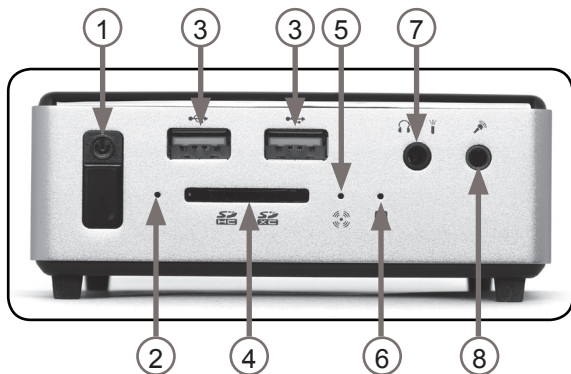
### Package contents

- 1 x ZOTAC ZBOX nano XS mini-PC
- 1 x ZOTAC VESA mount
- 4 x Mount screws
- 1 x AC Adapter
- 1 x Power Cord
- 1 x Headphone/SPDIF adapter
- 1 x WiFi antenna
- 1 x USB flash drive with OS drivers
- 1 x User Manual
- 1 x Quick Start Guide
- 1 x Support DVD



## Getting to know your ZOTAC ZBOX nano XS

### Front view



Refer to the diagram below to identify the components on this side of the system

#### 1. Power button

The power button turns the mini-PC ON and OFF.

#### 2. Power status indicator

The power LED is red when connecting the AC adapter to the mini-PC, and it is green when power is on.

#### 3. USB 2.0 ports

The USB (Universal Serial Bus) 2.0 ports are compatible with USB 2.0 devices such as keyboards, mice, cameras and hard disk drives.

#### 4. Memory card reader

The built-in memory card reader reads SD/SDHC/SDXC cards used in devices such as digital cameras, MP3 players, mobile phones and PDAs.

#### 5. Wi-Fi status indicator

The Wi-Fi LED blinks when data is being transferred over Wi-Fi.

#### 6. HDD status indicator

The hard disk LED blinks when data is being written onto or read from the hard disk drive.

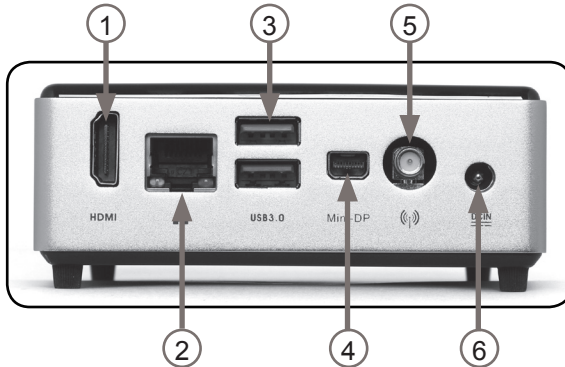
#### 7. Combo analog/mini-Optical S/PDIF output

The Combo analog/mini-Optical S/PDIF output (3.5mm) is used to connect the system's audio out signal to amplified speakers or headphones. It also supports SPDIF output with the headphone/SPDIF adapter included in the package. The optical SPDIF output enables connecting the ZBOX nano XS to digital audio receivers and speakers for crystal clear digital audio and surround sound from compatible soundtracks.

#### 8. Microphone input

The microphone input is designed to connect a microphone for video conferencing, voice narrations or simple audio recordings.

## Rear view



Refer to the diagram below to identify the components on this side of the system.

### 1. HDMI output

The HDMI (High Definition Multimedia Interface) output supports Full HD 1080p displays such as an HDTV or monitor.

### 2. Ethernet port

The eight-pin RJ-45 LAN port supports standard Ethernet cable for connection to a local area network (LAN) with speeds of 10/100/1000Mbps.

### 3. USB 3.0 ports

The USB 3.0 ports support the SuperSpeed USB 3.0 devices and are backwards compatible with USB 2.0/1.1 devices. Use the ports for USB 3.0 devices for maximum performance with USB 3.0 compatible devices.

### 4. Mini-DisplayPort output

The mini-DisplayPort outputs support displays with resolutions up to 3840x2160 @30Hz.

### 5. Wi-Fi antenna connector

The Wi-Fi antenna connector supports the included Wi-Fi antenna.

### 6. Power input (DC19V)

The supplied power adapter converts AC power to DC power for use with this jack. Power supplied through this jack supplies power to the mini-PC. To prevent damage to the mini-PC, always use the supplied power adapter.

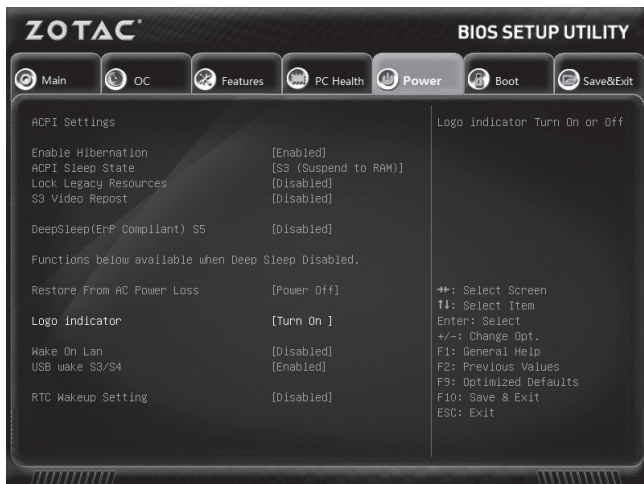
Note 1: The power adapter may become warm to hot when in use. Do not cover the adapter and keep it away from your body.

Note 2: Due to the special design for easy upgrade, some connectors are placed upside down.

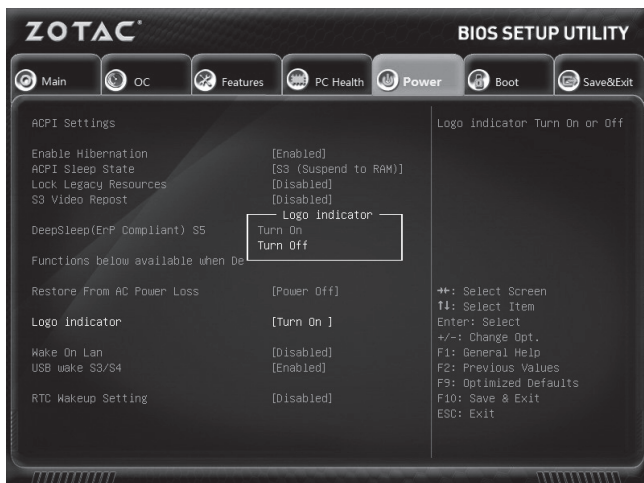


## How to disable the ring LED indicator

1. Turn on the ZBOX nano XS mini-PC, then press <Delete> to enter the BIOS SETUP UTILITY.
2. Use the arrow keys to navigate to the **Power** menu and select **Logo indicator**.



3. Press <Enter> and select **Turn off**.



4. Press F10 to save the configuration and exit.

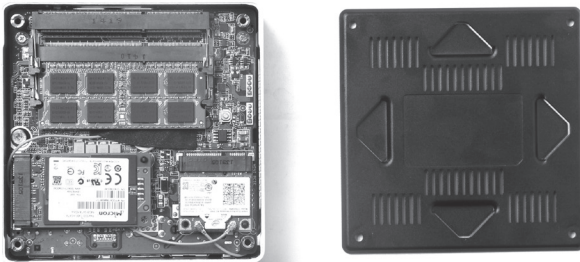
## Customizing the ZOTAC ZBOX nano XS

Please follow the instructions below to remove the cover of the ZOTAC ZBOX nano XS before customizing.

1. Loosen the 4 screws securing the bottom cover into place.

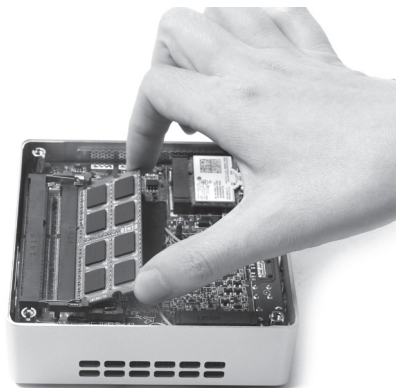


2. Gently remove the cover.

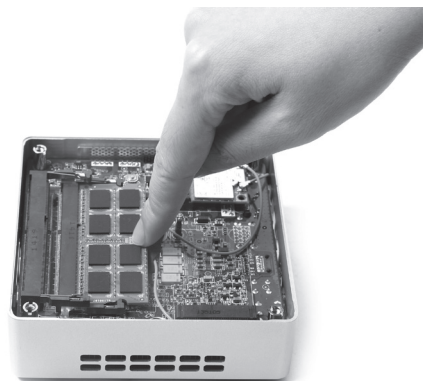


## Installing a memory module

1. Locate the SO-DIMM memory slot and insert a SO-DIMM memory module into the slot at a 45 degree angle.

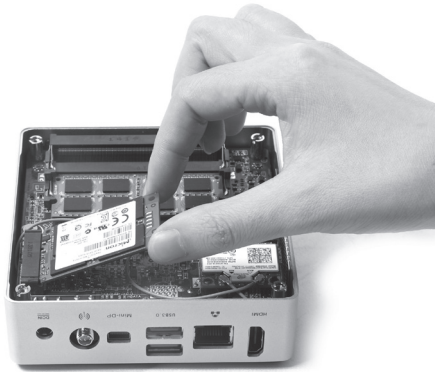


2. Gently press down on the memory module until it locks into place by the arms of the memory slot.

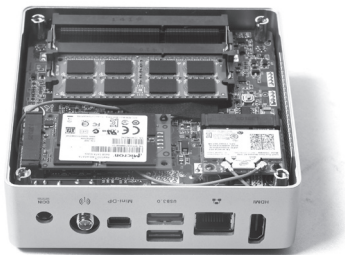


## Installing an mSATA

1. Insert the mSATA into the slot and gently slide into the connector.

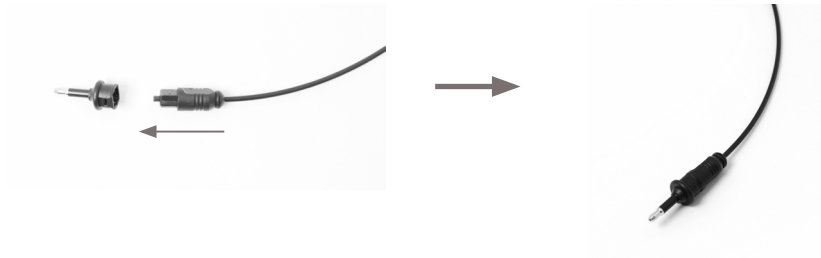


2. Gently press down on the mSATA module until it locks into place.



## Connecting a SPDIF cable

1. Connect the SPDIF cable to the headphone/SPDIF adapter correctly.

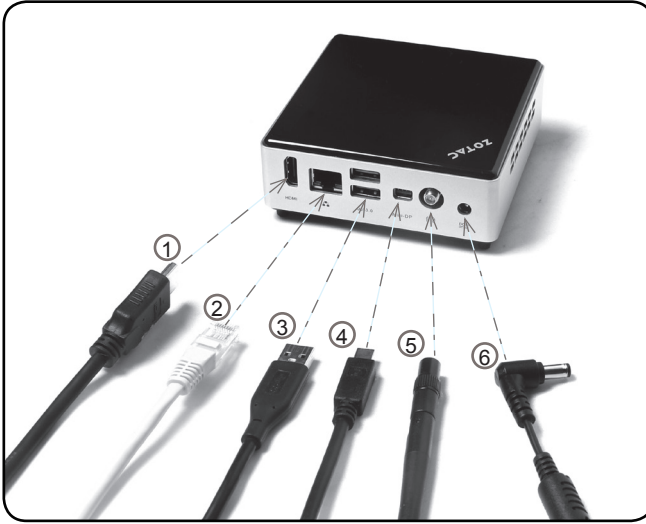


2. Locate the front panel and connect the headphone/SPDIF adapter to the headphone/SPDIF jack.



## Setting up the ZOTAC ZBOX nano XS

Please connect the peripherals before using the ZOTAC ZBOX nano XS.



### 1. Connecting to an HDMI display

Connect one end of an HDMI cable to the HDMI port on the system rear panel and the other end to an HDMI-compatible display such as an HDTV or monitor.

### 2. Connecting to a home network

Connect one end of a network cable to the LAN port on the system rear panel and the other end to a network hub, switch or router.

### 3. Connecting USB 3.0 device

Connect USB 3.0 devices such as external hard drives, SSDs and flash drives to the USB 3.0 port.

### 4. Connecting a mini-DisplayPort display

Connect the mini-DisplayPort connector to the mini-DP port of the monitor or display.

### 5. Connecting the Wi-Fi antenna

Connect the Wi-Fi antenna to the Wi-Fi antenna connector.

### 6. Connecting the power adapter and turning on the ZBOX nano XS

Connect the supplied AC adapter to the DC IN jack on the system rear panel and then press the power switch on the front panel to turn on the system.

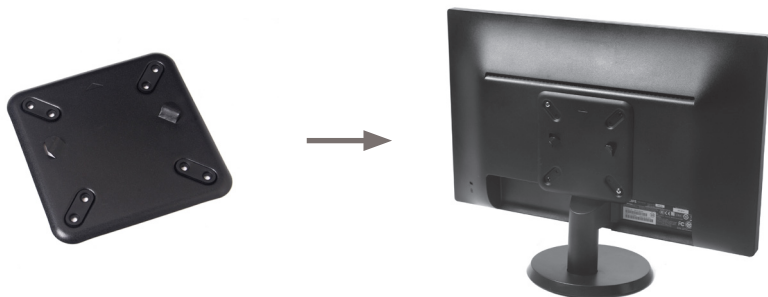
## Positioning the ZOTAC ZBOX nano XS

- Do not cover or block the ventilation holes on ZOTAC ZBOX nano XS. To ensure proper operation and reliability, leave approximately 4 inches (10 cm) of spacing in front of the ventilation holes.
- ZOTAC ZBOX nano XS mini-PC systems provide ample expansion in a miniature form factor, please use connectors and cables that are appropriate in size to avoid interference.

## Mounting the ZOTAC ZBOX nano XS to an LCD monitor

The ZOTAC ZBOX nano XS is monitor-mountable using the included VESA mount.

1. Secure the VESA mount to the LCD monitor using screws (not included).  
Disclaimer: ZOTAC cannot be held liable for damages resulting from an improper installation.



2. Align the ZOTAC ZBOX nano XS mounting holes to the VESA mount attachment pegs. Attach the ZOTAC ZBOX nano XS to the VESA mount and gently press down to secure the ZBOX nano XS to the mount.



3. Connect the ZOTAC ZBOX nano XS to your LCD monitor with an HDMI cable.





## Installing drivers and software

### Installing an operating system

The ZOTAC ZBOX nano XS does not ship with an operating system preinstalled. An operating system must be installed before the ZOTAC ZBOX nano XS can be used.

The following operating systems are supported:

- Windows 7
- Windows 8

Follow the instructions below to install an operating system:

1. Insert disk for operating system into the optical drive.
2. Wait for the ZOTAC ZBOX nano XS to boot from the disk.
3. Follow the onscreen directions to install the operating system.
4. Install system drivers to gain full functionality of the ZOTAC ZBOX nano XS hardware and features.

**Note:** *For best compatibility, please only use the eSATA or USB 2.0 ports as the OS installation source drive connection.*

### Installing system drivers

Before you can use the full features of the ZOTAC ZBOX nano XS, the system drivers must be installed. The following types of operating systems are supported by the ZOTAC ZBOX nano XS driver DVD and USB flash drive:

- Windows 7
- Windows 8

Follow the instructions below to install the system drivers:

1. Insert the ZOTAC ZBOX nano XS driver DVD or USB flash drive. If autorun is enabled, the driver installation main menu will show up automatically.

Note: If autorun is disabled, you can click the file Launch.EXE to bring up the driver installation main menu.

2. The following drivers are available on the DVD and USB flash drive:

- Intel Chipset Driver
- HDA Sound Driver
- Intel Graphics Driver
- Ethernet PCI-E Driver
- USB 3.0 Controller Driver
- Intel Management Engine
- Wireless Network Driver
- Bluetooth Driver
- MassStorage Driver
- USB Charger (optional)



**Note:** If you want to use USB charger for iPhone/iPad, please install the driver at X:\Utility\Software\Usb Charger\setup.exe (X: your driver disk letter).

- Each driver must be installed individually to ensure proper operation of the ZOTAC ZBOX.
- 3. Select the driver you want to install. The driver installer should launch.
- 4. Follow the onscreen instructions to install the drivers.
- 5. Restart the system.

## Using your ZOTAC ZBOX nano XS

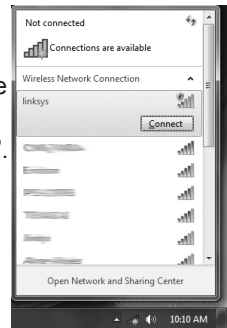
### Configuring wireless connection

Please follow the instructions below to connect to a wireless network:

1. Double-click the crossed wireless network icon (pic) in the notification area.
2. Select the wireless network you want to connect to from the list and click Connect.
3. After connection was established, you will see “Connected”.

Note 1: For security concerns, Do NOT connect to an unsecured network, otherwise, the transmitted information without encryption might be visible to others.

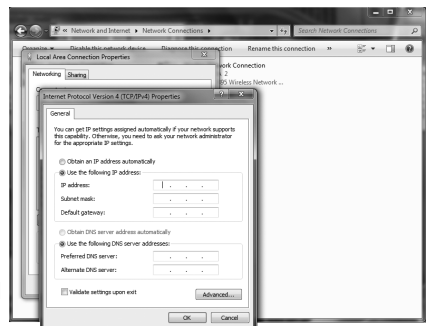
Note 2: Enter the network security key if necessary.



### Configuring wired connection

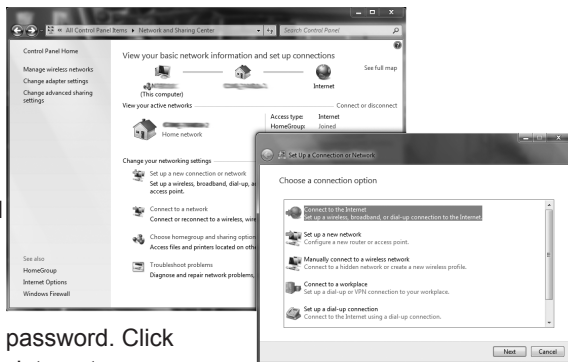
#### Using a static IP

1. Right-click the network icon in the notification area and select “Open Network Connections”.
2. Right-click “Local Area Connection” and select “Properties”.
3. Highlight “Internet Protocol (TCP/IP)” and click “Properties”.
4. Select “Use the following IP address”.
5. Enter your IP address, subnet mask and Default gateway.
6. Enter the preferred DNS server address if necessary.
7. After entering all of the related values, click “OK” to finish the configuration.



## Using a dynamic IP (PPPoE connection)

1. Repeat Step 1-3 in the previous section.
2. Select "Obtain an IP address automatically" and click "OK".
3. Click "Create a new connection" to start the NEW Connection Wizard.
4. Click "Next".
5. Select "Connect to the Internet" and click "Next".
6. Select "Set up my connection manually".
7. Select your connection type and click "Next".
8. Enter your ISP Name and click "Next".
9. Enter your User name and Password. Click "Next".
10. Click "Finish" to finish the configuration.
11. Enter your user name and password. Click "Connect" to connect to the internet.

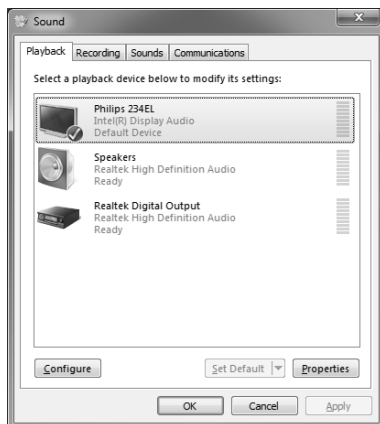


Note: Contact your internet Service Provider (ISP) if you have problems connecting to the network.

## Configuring audio output via an HDMI device

Follow the steps below to enable audio output via HDMI when connecting the ZOTAC ZBOX nano to a TV or receiver via HDMI.

1. Access the Sound settings via the system Control Panel.
2. Under Playback devices, click the display device that corresponds with your HDMI audio compatible display
3. Click the "Set Default" button in the lower right hand corner.
4. Click "OK" to exit the setup.







**ZOTAC®**  
*It's Time to Play.*

[WWW.ZOTAC.COM](http://WWW.ZOTAC.COM)



291-MB235-00K2F