




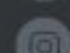
**PUSH  
YOUR  
SKILL**

GO TO →

**ZOTAC-CUP.COM**

**ZOTAC**<sup>®</sup>  
ZOTAC.COM

**LIVE TO GAME**

-  facebook.com/zotac
-  twitter.com/zotac
-  youtube.com/zotac\_official
-  vimeo.com/zotac
-  instagram.com/zotac\_official



**ZOTAC GAMING**



**USER'S  
MANUAL**

MEK1 GAMING PC

# ZOTAC GAMING MEK1 GAMING PC

## User's Manual



No part of this manual, including the products and software described in it, may be reproduced, transmitted, transcribed, stored in a retrieval system, or translated into any language in any form or by any means, except documentation kept by the purchaser for backup purposes, without the express written permission of ZOTAC.

Products and corporate names mentioned in this manual may be registered trademarks or copyrights of their respective companies, and are used for identification purposes only. All trademarks are the property of their respective owners.

Every effort has been made to ensure that the contents of this manual are correct and up to date. However, the manufacturer makes no guarantee regarding the accuracy of its contents, and reserves the right to make changes without prior notice.

### **CAUTION:**

Risk of explosion if the battery is replaced with an incorrect type. Batteries should be recycled where possible. Disposal of used batteries must be in accordance with local environmental regulations.

## Table of Contents

<b>Product specifications</b>	<b>3</b>
<b>Safety information</b>	<b>4</b>
Setting up your system	4
Care during use	4
<b>Welcome</b>	<b>5</b>
Package contents	5
<b>Getting to know your ZOTAC GAMING MEK1 Gaming PC</b>	<b>6</b>
Front view	6
Rear view	7
Side view	8
<b>Standing your ZOTAC GAMING MEK1 Gaming PC</b>	<b>9</b>
<b>Setting up your ZOTAC GAMING MEK1 Gaming PC</b>	<b>10</b>
<b>Configuring your ZOTAC GAMING MEK1 Gaming PC</b>	<b>12</b>
Configuring a wireless connection	12
Configuring a wired connection	12
Using a static IP	12
Configuring audio output	13
<b>Mouse &amp; Keyboard</b>	<b>14</b>
Standard keyboard shortcuts	14
Lighting effects	14
Macro	15

## Product specifications

- ❑ **Microprocessor support**
  - ❖ Intel Core i5-9400F (six-core 2.9 GHz, up to 4.1 GHz)
- ❑ **Onboard Graphics support**
  - ❖ ZOTAC GAMING GeForce RTX 2060 w/ 6GB GDDR6, 192-bit
  - ❖ 3 x DisplayPort 1.4, 1 x HDMI 2.0
- ❑ **Operating systems:**
  - ❖ Windows 10 Home (pre-installed)
- ❑ **System Memory support**
  - ❖ Two DDR4 DIMM slots (2x8G 2666MHz pre-installed)
- ❑ **Onboard Serial ATA**
  - ❖ Supports one 2.5-inch SATA HDD or SSD (1TB HDD pre-installed)
- ❑ **Expansion slot**
  - ❖ One M.2 PCIe x4 / SATA SSD slot (240GB NVMe SSD pre-installed)
- ❑ **USB Ports**
  - ❖ Two USB 3.0 port (Front)
  - ❖ Two USB 2.0 port (Rear)
  - ❖ Four USB 3.0 ports (Rear)
  - ❖ One USB 3.1 Type-C port (Rear)
- ❑ **Onboard Dual LAN**
  - ❖ Supports 10/100/1000 Mbps operation
  - ❖ Supports IEEE 802.3
- ❑ **WiFi/Bluetooth support**
  - ❖ Compliant with IEEE802.11ac standard
  - ❖ Bluetooth v4.2
- ❑ **Onboard Audio**
  - ❖ 7.1 audio output and Microphone input with Optical output
- ❑ **Power Management**
  - ❖ Supports ACPI (Advanced Configuration and Power Interface)
- ❑ **Product Size**
  - ❖ 418.3 x 118 x 415.2 mm (LxWxH)
- ❑ **Power Supply**
  - ❖ 450W

## Safety information

Your ZOTAC GAMING MEK1 Gaming PC is designed and tested to meet the latest standards of safety for information technology equipment. However, to ensure your safety, it is important that you read the following safety instructions.

### Setting up your system

- ❖ Read and follow all instructions in the documentation before operating your system.
  - ❖ Do not use this product near water or a heat source such as a radiator.
  - ❖ Set up the system on a stable surface.
  - ❖ Openings on the chassis are for ventilation. Do not block or cover these openings. Make sure you leave plenty of space around the system for ventilation. Never insert objects of any kind into the ventilation openings.
  - ❖ Use this product in environments with ambient temperatures between 0°C and 35°C.
- ☞ If you use an extension cord, please use the UL listed cord and make sure that the total ampere rating of the devices plugged into the extension cord does not exceed its ampere rating.

### Care during use

- ❖ Do not walk on the power cord or allow anything to rest on it.
- ❖ Do not spill water or any other liquids on your system.
- ❖ When the system is turned off, a small amount of electrical current still flows. Always unplug all power, modem, and network cables from the power outlets before cleaning the system.
- ❖ If you encounter the following technical problems with the product, unplug the power cord and contact a qualified service technician or your retailer.
  - The power cord or plug is damaged.
  - Liquid has been spilled onto the system.
  - The system does not function properly even if you follow the operating instructions.
  - The system was dropped or the cabinet is damaged.

## Welcome

Congratulations on your purchase of the ZOTAC GAMING MEK1 Gaming PC. The following illustration displays the package contents of your new MEK1 Gaming PC. If any of the below items are damaged or missing, please contact your retailer.

### Package contents

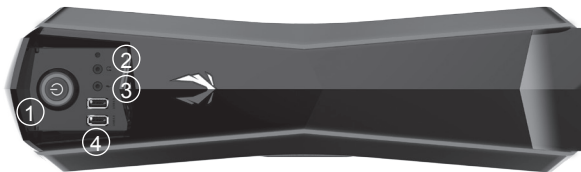
- 1 x ZOTAC GAMING MEK1 Gaming PC
- 2 x MEK1 Gaming PC Stand
- 1 or 2 x Power Cord (depends on region)
- 2 x Antenna
- 1 x Windows recovery DVD (optional; depends on region)
- 1 x USB flash drive with Windows drivers
- 1 x User Manual & Warranty Card
- 1 x Quick Start Guide
- 1 x Gaming mouse\*
- 1 x Gaming keyboard\*
- 1 x Gaming mouse pad\*

\*Only applicable on select bundles



## Getting to know your ZOTAC GAMING MEK1 Gaming PC

### Front view



Refer to the diagram below to identify the components on this side of the system

#### 1. Power switch

The power switch allows powering ON and OFF the system. The ring LED will be lit while system is On.

#### 2. Headphone/Audio Out jack

The stereo headphone jack (3.5mm) is used to connect the system's audio out signal to gaming headset.

#### 3. Microphone jack

The microphone jack is designed to connect the microphone used for easy connection with gaming headset.

#### 4. USB 3.0 ports

The USB 3.0 port supports the SuperSpeed USB 3.0 devices and is backwards compatible with USB 2.0/1.1 devices. Use this port for USB 3.0 devices for maximum performance with USB 3.0 compatible devices.

## Rear view



### 1. Power input (IEC C14, standard power cord connection)

Connected with power cord to mains for AC input.

### 2. DisplayPorts

DisplayPorts supports both external (box-to-box) and internal (laptop LCD panel) display connections.

### 3. HDMI port

The HDMI (High Definition Multimedia Interface) port supports a UHD device such as an LCD TV or monitor to allow viewing on a larger external display.

### 4. Audio ports

Use the five audio ports to connect audio devices. The pink jack is for microphone. The green jack is for front speaker out signal. The blue jack is for side speaker out signal. The orange jack is for rear speaker out signal. The black jack is for center/subwoofer signal.

### 5. Optical (SPDIF OUT) jack

The optical S/PDIF output enables connectivity with digital audio receivers and speakers for crystal clear digital audio and surround sound from compatible soundtracks.

### 6. USB 3.0 ports

The USB 3.0 port supports the SuperSpeed USB 3.0 device. Use this port for USB 3.0 devices for maximum performance with USB 3.0 compatible devices.

### 7. LAN ports

The eight-pin RJ-45 LAN ports support standard Ethernet cables for connection to a local network.

### 8. WiFi antenna connectors

The WiFi antenna connector supports WiFi antenna module.



### 9. USB 3.1 Type-C port

The type-C USB 3.1 port supports the SuperSpeed USB 3.1 devices. Use this port for USB 3.1 devices for maximum performance with USB 3.1 compatible devices.

### 10. USB 2.0 ports

The USB (Universal Serial Bus) port is compatible with USB 2.0 devices. It is recommended that you connect keyboard and mouse to the USB 2.0 ports.

☞ *Do not block ventilation outlet for warm air exhaust.*

## Side view



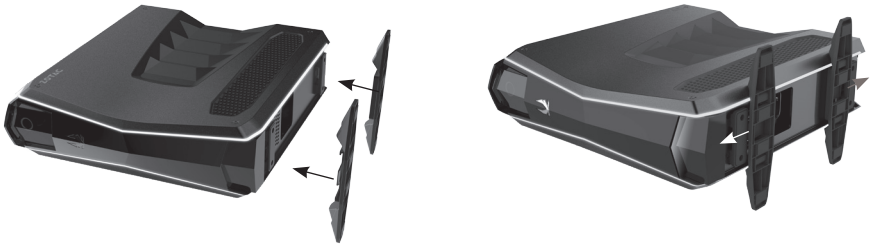
### 1. LED Strips

Lighting effects are controlled by ZOTAC GAMING Spectra software. Customize color, 5 different lighting modes, and brightness. Visit [www.zotac.com](http://www.zotac.com) website for the latest version.

☞ *Do not block the ventilation inlet / outlet. Lack of ventilation may cause system overheating.*

## Standing your ZOTAC GAMING MEK1 Gaming PC

1. Lay the MEK1 Gaming PC on its side on a flat surface.
2. Position the two MEK1 Gaming PC feet outside the edge of the flat surface.
3. Slide MEK1 Gaming PC stands on the MEK1 Gaming PC feet.



4. Lift the MEK1 Gaming PC up and position it upright.



\*Standing the MEK1 Gaming PC without installing the stand is not recommended as it may be unstable and can be easily unbalanced.

## Setting up your ZOTAC GAMING MEK1 Gaming PC

You need to connect peripherals before using your ZOTAC GAMING MEK1 Gaming PC.



### 1. Connecting to displays

Connect display to DP/HDMI if port available.

### 2. Connecting Audio devices

Connect the 7.1 Audio output or Optical output into your personal sound system, if needed.

### **3. Connecting to a network device**

Connect one end of a network cable to the LAN port on the system rear panel and the other End to a hub or switch.

### **4. Connecting to USB 3.0 devices**

Connect USB 3.0 devices such as external hard disk drives, SSDs and flash drives to the USB 3.0 ports.

### **5. Connecting WiFi antenna modules**

Connect WiFi antenna modules to the WiFi antenna connectors.

### **6. Connecting to USB 3.1 Type-C device**

Connect USB 3.1 Type-C device to the USB 3.1 Type-C port.

### **7. Connecting to USB 2.0 devices**

It is recommended that you connect keyboard and mouse to the USB 2.0 ports.

### **8. Turning on the system**

Plug the power cord into the power connector firmly and connect the other end to AC outlet. Then press the power switch on the front panel to turn on the system.

☞ When your ZOTAC GAMING MEK1 Gaming PC is not in use, unplug the power socket from AC outlet to save on power consumption.

## Configuring your ZOTAC GAMING MEK1 Gaming PC

### Configuring a wireless connection

Please follow the instructions below to connect to a wireless network:

1. Double-click the wireless network icon (pic) in the notification area.
2. Select the wireless network you want to connect to from the list and click Connect.
3. After connection is established, you will see “Connected.”

Note 1: For security concerns, Do NOT connect to an unsecured network, otherwise, the transmitted information without encryption might be visible to others.

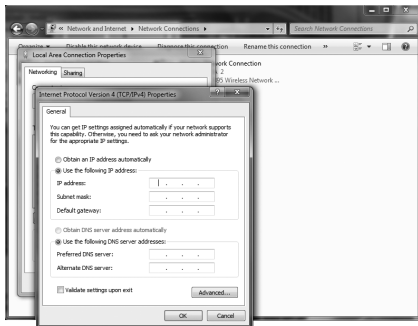
Note 2: Enter the network security key if necessary.



### Configuring a wired connection

#### Using a static IP

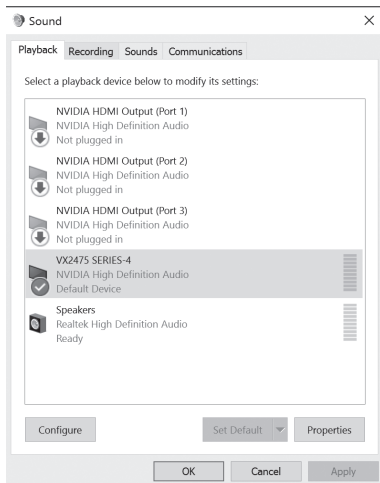
1. Connect one end of the Ethernet cable to your Internet Service Provider (ISP) modem/router.
2. Connect the other end to the Ethernet port in the rear of the MEK1 Gaming PC.
3. Highlight “Internet Protocol (TCP/IP)” and click “Properties”.
4. Select “Use the following IP address”.
5. Enter your IP address, subnet mask and Default gateway.
6. Enter the preferred DNS server address if necessary.
7. After entering all of the related values, click “OK” to finish the configuration.



## Configuring audio output

Follow the steps below to enable audio output when connecting the MEK1 Gaming PC to a TV or receiver via DP/HDMI adapter.

1. Access the Sound settings via the system Control Panel.
2. Under Playback devices, click the display device that corresponds with your audio compatible display.
3. Click the “Set Default” button in the lower right hand corner.
4. Click “OK” to exit the setup.



## Mouse & Keyboard

Mouse and Keyboard are ready to use once connected to the USB port of the MEK1 Gaming PC.

Adjust the Mouse DPI sensitivity by pressing the button behind the Scroll wheel of the Mouse. Refer to below list for Keyboard shortcut features and lighting.

### Standard keyboard shortcuts

**FN+ESC** = Turn off the backlight

**FN+F1** = Media

**FN+F2** = Play/Pause

**FN+F3** = Stop

**FN+F4** = Vol+

**FN+F5** = Vol-

**FN+F6** = Mute

**FN+WIN\_L** = WIN lock

### Lighting effects

**FN+PrtSc** (press one time to change a mode) = Twelve backlight modes:

Marquee

Wave

Ripple

Spread

Flow

Cyclone

Breathing

Normal

Trace

Gloomy

Firefly

Twinkle

**FN+↑/↓** = Five level brightness adjustment

**FN+→/←** = Five speed regulation

## Macro

**FN+PAUSE:** This mode can customize the backlight of each key LED. Enter the default 6 groups custom backlight by **FN+PAUSE**, switch one group at a time. If you want to modify the current group lighting effect; press **FN+SCL**, the indicator light will flash.

Then press any key you want to light up. After the modification is completed, press **FN+SCL** to save the changes.

**FN+Del** = Factory Reset (press and hold for 3sec.) Restore factory preset gaming mode macros.

\*Gaming Mouse and Keyboard only applicable on select bundles.



