

ZOTAC

ZBOX

nano XS

YOUR PALM-SIZED MINI-PC

E2
VISION
AMD



ZOTAC ZBOX nano XS AD13 Series
USER'S MANUAL

ZOTAC ZBOX nano XS

User's Manual



No part of this manual, including the products and software described in it, may be reproduced, transmitted, transcribed, stored in a retrieval system, or translated into any language in any form or by any means, except documentation kept by the purchaser for backup purposes, without the express written permission of ZOTAC.

Products and corporate names mentioned in this manual may not be registered trademarks or copyrights of their respective companies, and are used for identification purposes only. All trademarks are the property of their respective owners.

Every effort has been made to ensure that the contents of this manual are correct and up to date. However, the manufacturer makes no guarantee regarding the accuracy of its contents, and reserves the right to make changes without prior notice.

CAUTION:

Risk of explosion if the battery is replaced with an incorrect type. Batteries should be recycled where possible. Disposal of used batteries must be in accordance with local environmental regulations.

Table of Contents

Product specifications	3
Safety information	4
Setting up your system	4
Care during use	4
Welcome	5
Package contents	5
Getting to know your ZOTAC ZBOX nano XS	6
Front view	6
Rear view	7
BIOS settings of specific functions	8
How to disable the ring LED indicator	8
How to enable USB2.0 charge (for S3/S4/S5 status)	10
How to disable CIR controller (for internal IR receiver)	11
Customizing the ZOTAC ZBOX nano XS	12
Installing a memory module	13
Installing an mSATA	14
Connecting a SPDIF cable	15
Setting up the ZOTAC ZBOX nano XS	16
Positioning the ZOTAC ZBOX nano XS	17
Mounting the ZOTAC ZBOX nano XS to a LCD monitor	17
IR receiver	18
Remote control (optional)	19
Function keys	19
Lithium cell installation	20
Installing drivers and software	21
Installing an operating system	21
Installing system drivers	21
Using your ZOTAC ZBOX nano XS	22
Configuring wireless connection	22
Configuring wired connection	22
Using a static IP	22
Using a dynamic IP (PPPoE connection)	23
Configuring audio output via an HDMI device	23

Product specifications

Chipset

- AMD Hudson M3L

Product Dimensions

- 106mm x 106mm x 37mm

Onboard CPU

- AMD E2-1800 (dual core, 1.7GHz)

Onboard graphics

- AMD Radeon HD7340, DirectX11
- Support HDMI (1920x1200 resolution) output
- Support AMD UVD3.0

Memory support

- One 204-pin DDR3-1333 SO-DIMM slot
- Up to 8 GB of memory

USB ports

- Two USB 2.0 ports & two USB 3.0 ports

Storage support

- SATA one mSATA 6.0 Gb/s transfer rates
- One combo eSATA / USB2.0 port

Network support

- Gigabit (10/100/1000Mbps) LAN
- IEEE 802.3 compatible

WiFi support

- Compliant with IEEE802.11b/g/n standard
- High speed wireless connection up to 150 Mbps

Audio

- 2-channel high-definition audio
- Jack-sensing compatible

Operating System support

- Windows 7 32bit/64bit and Windows 8 32bit/64bit

IR receiver

- Support carrier frequencies 36k Hz
- Compliant with Windows 7

Safety information

Your ZOTAC ZBOX nano XS is designed and tested to meet the latest standards of safety for information technology equipment. However, to ensure your safety, it is important that you read the following safety instructions.

Setting up your system

- ❖ Read and follow all instructions in the documentation before you operate your system.
- ❖ Do not use this product near water or a heat source such as a radiator.
- ❖ Set up the system on a stable surface with the provided stand. Never use the system alone without the stand.
- ❖ Openings on the chassis are for ventilation. Do not block or cover these openings. Make sure you leave plenty of space around the system for ventilation. Never insert objects of any kind into the ventilation openings.
- ❖ Use this product in environments with ambient temperatures between 0°C and 35°C.
- ✂ If you use an extension cord, please use the UL listed cord and make sure that the total ampere rating of the devices plugged into the extension cord does not exceed its ampere rating.

Care during use

- ❖ Do not walk on the power cord or allow anything to rest on it.
- ❖ Do not spill water or any other liquids on your system.
- ❖ When the system is turned off, a small amount of electrical current still flows. Always unplug all power, modem, and network cables from the power outlets before cleaning the system.
- ❖ If you encounter the following technical problems with the product, unplug the power cord and contact a qualified service technician or your retailer.
 - The power cord or plug is damaged.
 - Liquid has been spilled into the system.
 - The system does not function properly even if you follow the operating instructions.
 - The system was dropped or the cabinet is damaged.
 - The system performance changes.

Welcome

Congratulations on your purchase of the ZOTAC ZBOX nano XS mini-PC. The following illustration displays the package contents of your new ZOTAC ZBOX nano XS. Please contact your retailer if any of the below items are damaged or missed.

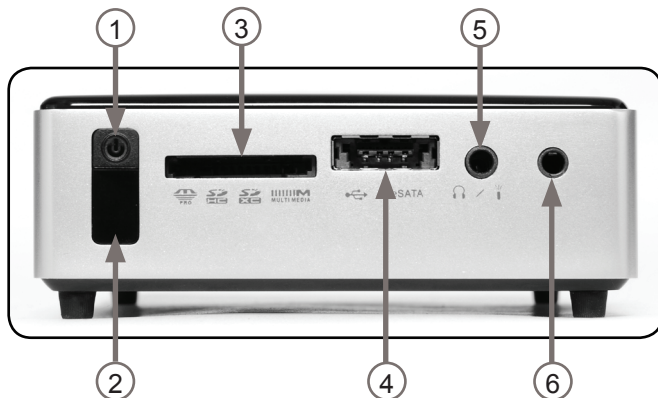
Package contents

- 1 x ZOTAC ZBOX nano XS mini-PC
- 1 x ZOTAC VESA mount
- 4 x Mount screws
- 1 x AC Adapter
- 1 x Power Cord
- 1 x External USB IR receiver
- 1 x Remote Control
- 2 x CR2032 Lithium Cells
- 1 x Headphone/SPDIF adapter
- 1 x USB WiFi module
- 1 x User Manual
- 1 x Quick Start Guide
- 1 x Support DVD



Getting to know your ZOTAC ZBOX nano XS

Front view



Refer to the diagram below to identify the components on this side of the system

1. Power switch

The power switch turns the mini-PC ON and OFF.

2. IR receiver

The IR receiver is used to receive the signal from the IR remote control.

3. Memory card slot

The built-in memory card reader reads and writes MMC/SD/SDHC/MS/MS Pro/SDXC cards used in devices such as digital cameras, MP3 players, mobile phones and PDAs.

4. Combo eSATA / USB2.0 port

The combo eSATA USB2.0 port is compatible with eSATA devices such as external hard drives and Blu-ray drives, and USB2.0 devices.

5. Headphone/SPDIF jack

The headphone/SPDIF jack (3.5mm) is used to connect the system's audio out signal to amplified speakers or headphones. It also supports SPDIF output with the headphone/SPDIF adapter included in the package. The optical SPDIF output enables connecting the ZBOX nano XS to digital audio receivers and speakers for crystal clear digital audio and surround sound from compatible soundtracks.

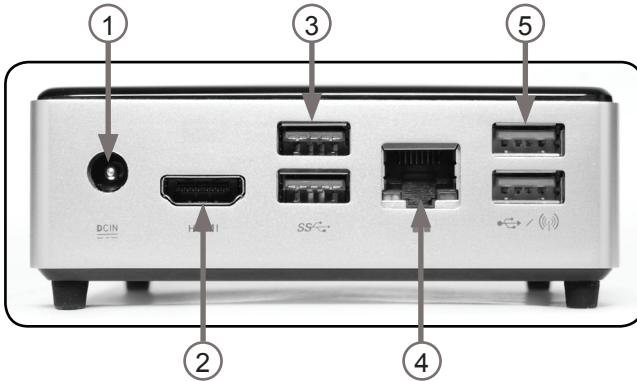
6. Microphone jack

The microphone jack is designed to connect a microphone for video conferencing, voice narrations or simple audio recordings.

Note 1: The power adapter may become warm to hot when in use. Do not cover the adapter and keep it away from your body.

Note 2: Due to the special design for easy upgrade, some connectors are placed upside down.

Rear view



Refer to the diagram below to identify the components on this side of the system.

1. Power input (DC19V)

The supplied power adapter converts AC power to DC power for use with this jack. Power supplied through this jack supplies power to the mini-PC. To prevent damage to the mini-PC, always use the supplied power adapter.

2. HDMI output

The HDMI (High Definition Multimedia Interface) output supports Full HD 1080p displays such as an HDTV or monitor.

3. USB3.0 ports

The USB3.0 ports support the SuperSpeed USB3.0 devices and are backwards compatible with USB2.0/1.1 devices. Use the ports for USB3.0 devices for maximum performance with USB3.0 compatible devices.

4. Ethernet port

The eight-pin RJ-45 LAN port supports standard Ethernet cable for connection to a local area network (LAN) with speeds of 10/100/1000Mbps.

5. USB2.0 ports

The USB (Universal Serial Bus) 2.0 ports are compatible with USB2.0 devices such as keyboards, mice, cameras and hard disk drives.

BIOS settings of specific functions

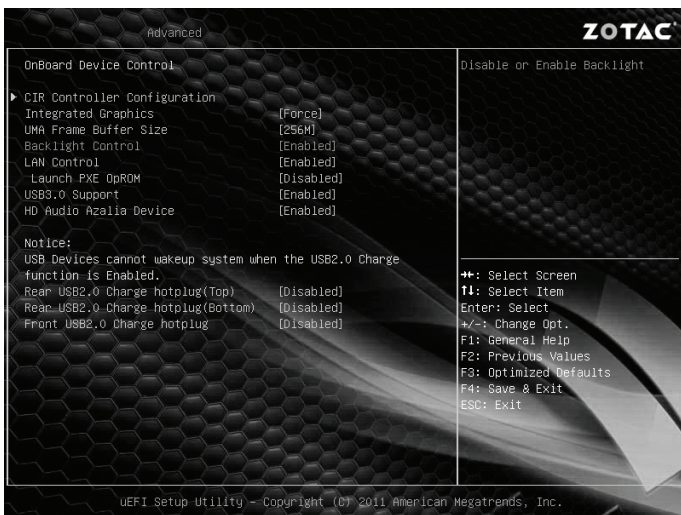
ZOTAC ZBOX nano XS has some specific functions which can be enabled or disabled in BIOS settings, such as LED indicator, USB2.0 charge and CIR controller.

How to disable the ring LED indicator

1. Turn on the ZBOX nano mini-PC, then press <Delete> to enter the BIOS SETUP UTILITY.
2. Use the arrow keys to navigate to the **Advanced** menu and select **Onboard Device Config**.



3. Press <Enter> to display the **Onboard Device Control** and navigate to **Backlight Control**.



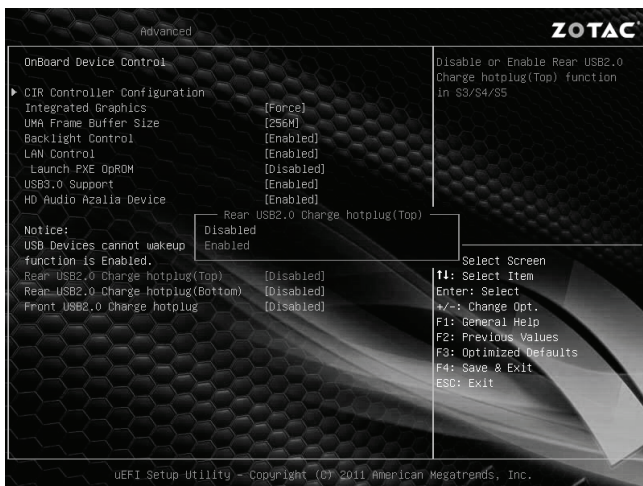
4. Press <Enter> and select **Disabled**.



5. Press F10 to save the configuration and exit.

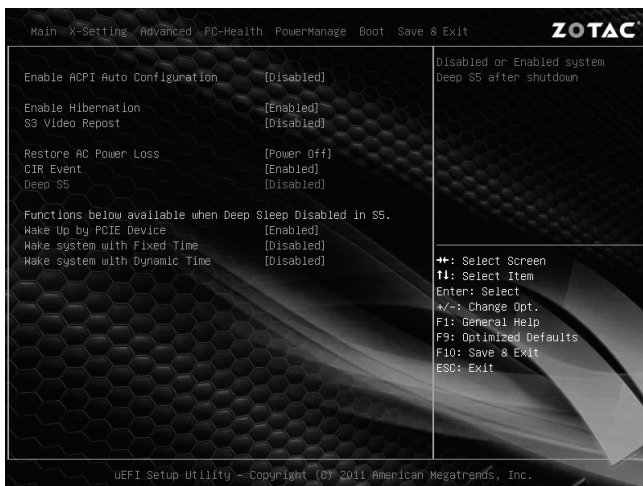
How to enable USB2.0 charge (for S3/S4 status)

1. In **Advanced** menu, select **Onboard Device Config** and press <Enter>.
2. Use the arrow keys to enter the item **Rear USB2.0 Charge hotplug(Top/ Bottom) / Front USB2.0 Charge hotplug**, and select **Enabled**.



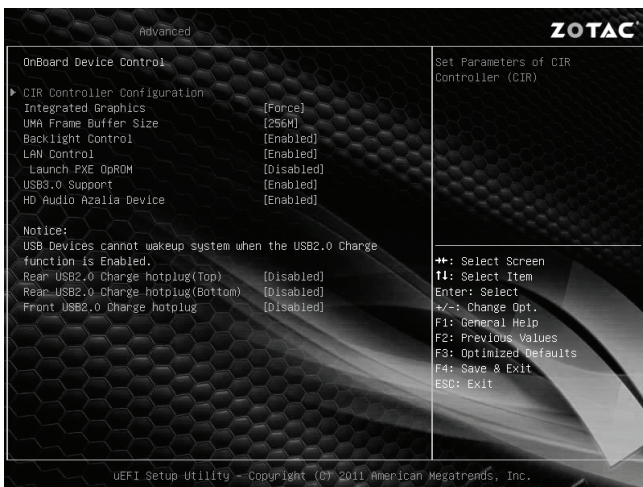
3. Press F10 to save the configuration and exit.

Note: Before charging via USB2.0 in S5 status, please make sure the Deep S5 (**Deep S5 in PowerManage** menu) is disabled.



How to disable CIR controller (for internal IR receiver)

1. Use the arrow keys to navigate to **Advanced > OnBoard Device Config > CIR Controller Configuration**.



2. Enter **CIR Controller** and select **Disabled**.



Enabled: enable the internal IR receiver (default)

Disabled: disable the internal IR receiver

3. Press **F10** to save the configuration and exit.

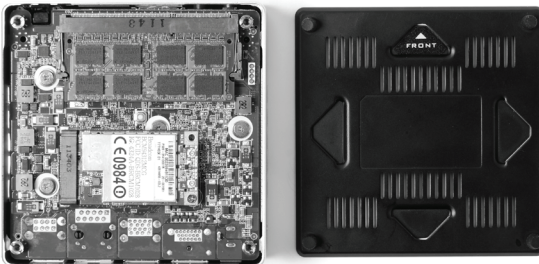
Customizing the ZOTAC ZBOX nano XS

Please follow the instructions below to remove the cover of the ZOTAC ZBOX nano XS before customizing.

1. Loosen the 4 screws securing the bottom cover into place.

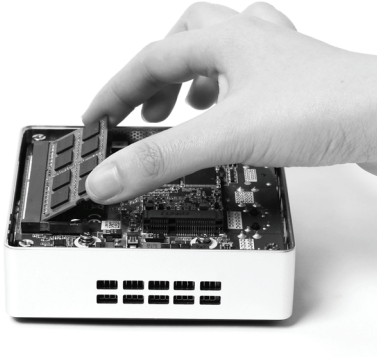


2. Gently remove the cover.

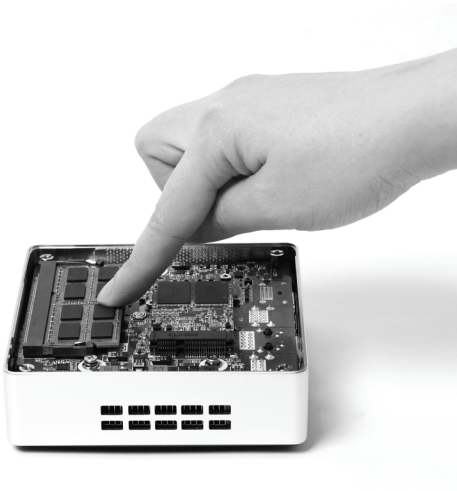


Installing a memory module

1. Locate the SO-DIMM memory slot and insert a SO-DIMM memory module into the slot at a 45 degree angle.

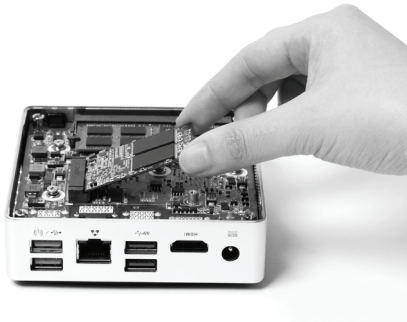


2. Gently press down on the memory module until it locks into place by the arms of the memory slot.

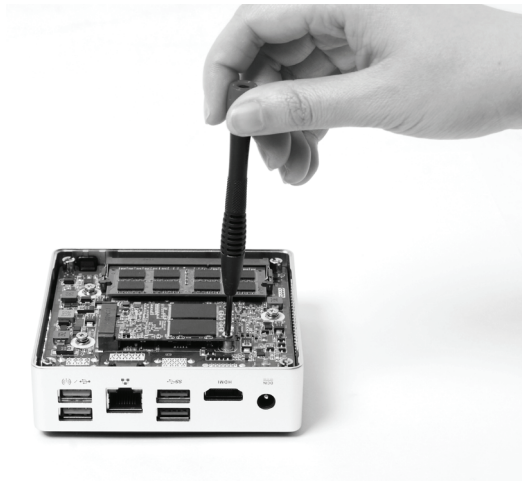


Installing an mSATA

1. Insert the mSATA into the slot and gently slide into the connector.



2. Install the screws of the mSATA.



Connecting a SPDIF cable

1. Connect the SPDIF cable to the headphone/SPDIF adapter correctly.

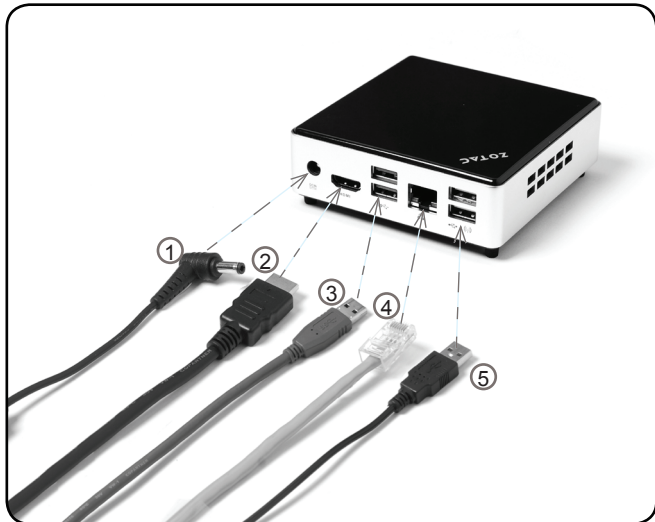


2. Locate the front panel and connect the headphone/SPDIF adapter to the headphone/SPDIF jack.



Setting up the ZOTAC ZBOX nano XS

Please connect the peripherals before using the ZOTAC ZBOX nano XS.



1. Turning on the system

Connect the supplied AC adapter to the DC IN jack on the system rear panel and then press the power switch on the front panel to turn on the system.

2. Connecting to an HDMI display

Connect one end of an HDMI cable to the HDMI port on the system rear panel and the other end to a HDMI-compatible display such as an HDTV or monitor.

3. Connecting USB3.0 device

Connect USB3.0 devices such as external hard drives, SSDs and flash drives to the USB3.0 port.

4. Connecting to a home network

Connect one end of a network cable to the LAN port on the system rear panel and the other end to a network hub, switch or router.

5. Connecting USB2.0 device

Connect USB2.0 devices like wired/wireless keyboards (varying with areas), mouse devices and printers to the USB2.0 ports.

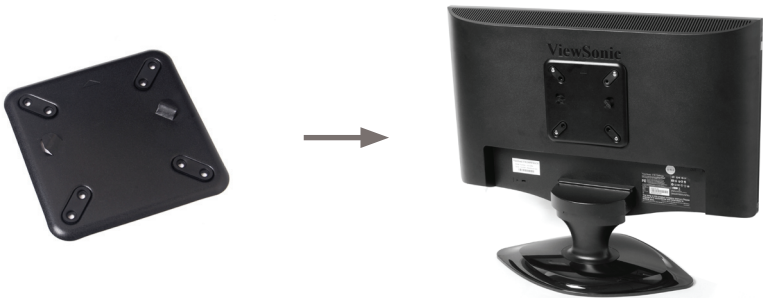
Positioning the ZOTAC ZBOX nano XS

- Do not cover or block the ventilation holes on ZOTAC ZBOX nano XS. To ensure proper operation and reliability, leave approximately 4 inches (10 cm) of spacing in front of the ventilation holes.
- ZOTAC ZBOX nano XS mini-PC systems provide ample expansion in a miniature form factor, please use connectors and cables that are appropriate in size to avoid interference.

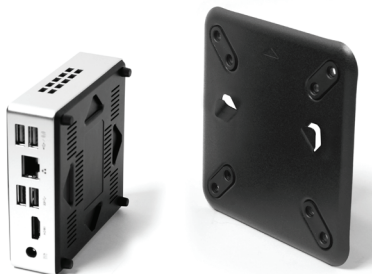
Mounting the ZOTAC ZBOX nano XS to a LCD monitor

The ZOTAC ZBOX nano XS is monitor-mountable using the included VESA mount.

1. Secure the VESA mount to the LCD monitor using screws (not included).
Disclaimer: ZOTAC cannot be held liable for damages resulting from an improper installation.



2. Align the ZOTAC ZBOX nano XS mounting holes to the VESA mount attachment pegs. Attach the ZOTAC ZBOX nano XS to the VESA mount and gently press down to secure the ZBOX nano XS to the mount.



3. Connect the ZOTAC ZBOX nano XS to your LCD monitor with an HDMI cable.



IR receiver

Users can control the ZBOX nano XS by either IR receiver or external USB IR receiver.

1. IR receiver

Note: Please install CIR driver from DVD before you use the IR receiver.



IR receiver



2. External USB IR receiver via USB 2.0 port

Note: Refer to page 11 to disable internal IR receiver before connecting external USB IR receiver.



External USB IR receiver

Remote control (optional)

ZOTAC ZBOX nano XS is shipped with a remote control. Follow the instructions below to use the remote control.

Function keys

Navigation Buttons



START



OK



BACK



INFORMATION



UP



DOWN



LEFT



RIGHT

Shortcut Buttons



GUIDE



SLEEP



WAKE

Audio and Video Buttons

VOLUME
UP / DOWN

MUTE

CHANNEL
UP / DOWN

Playback Buttons



RECORD



PAUSE



STOP



REW



PLAY



FWD



REPLAY



SKIP

Numeric Keypad

1

2

3

4

5

6

7

8

9

* .

0

#

CLEAR

ENTER

Teletext Buttons



TELETEXT



RED



GREEN




YELLOW

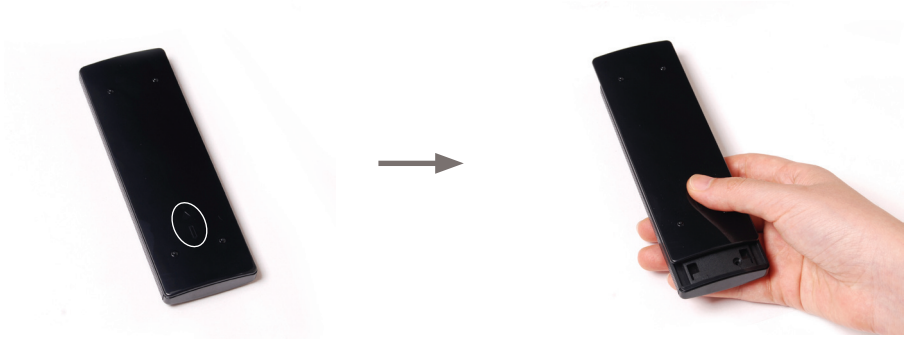


BLUE

Note: Some remote control functions listed above are only available with the relative hardware equipments. If the hardware equipments you adopt are not compatible with the system, you are unable to use these functions. The ZOTAC ZBOX nano XS is designed to meet MCE standards. The MCE remote control is compliant with Windows 7.

Lithium cell installation

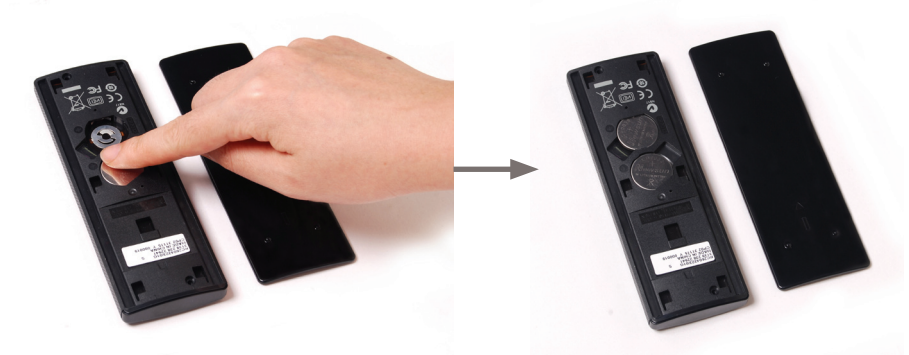
1. Locate the arrow  on the rear cover of the remote control, and push the cover as the arrow direction.



2. Remove the rear cover, and insert the CR2032 lithium cells into the battery jar at a 45 degree angle.



3. Gently press down on the CR2032 lithium cells, and reinstall the rear cover.



Installing drivers and software

Installing an operating system

The ZOTAC ZBOX nano XS does not ship with an operating system preinstalled. An operating system must be installed before the ZOTAC ZBOX nano XS can be used.

The following operating systems are supported:

- Windows 7
- Windows 8

Follow the instructions below to install an operating system:

1. Insert disk for operating system into the optical drive.
2. Wait for the ZOTAC ZBOX nano XS to boot from the disk.
3. Follow the onscreen directions to install the operating system.
4. Install system drivers to gain full functionality of the ZOTAC ZBOX nano XS hardware and features.

Note: For best compatibility, please only use the eSATA or USB 2.0 ports as the OS installation source drive connection.

Installing system drivers

Before you can use the full features of the ZOTAC ZBOX nano XS, the system drivers must be installed. The following types of operating systems are supported by the ZOTAC ZBOX nano XS driver DVD:

- Windows 7
- Windows 8

Follow the instructions below to install the system drivers:

1. Insert the ZOTAC ZBOX nano XS driver DVD. If autorun is enabled, the driver installation main menu will show up automatically.

Note: If autorun is disabled, you can click the file Launch.EXE to bring up the driver installation main menu.

2. The following drivers are available on the DVD:

- AMD Chipset Driver
- Realtek HD Audio Driver
- Realtek Network Driver
- MassStorage Driver
- CIR Driver
- USB Charger (optional)



Note: If you want to use USB charger for iPhone/iPad, please install the driver at X:\Utility\Software\Usb Charger\setup.exe (X: your driver disk letter).

Note: Each driver must be installed individually to ensure proper operation of the ZOTAC ZBOX nano XS.

3. Select the driver you want to install. The driver installer should launch.
4. Follow the onscreen instructions for the selected driver to install.
5. Restart the system.

Using your ZOTAC ZBOX nano XS

Configuring wireless connection

Please follow the instructions below to connect to a wireless network:

1. Double-click the crossed wireless network icon (pic) in the notification area.
2. Select the wireless network you want to connect to from the list and click Connect.
3. After connection was established, you will see “Connected”.

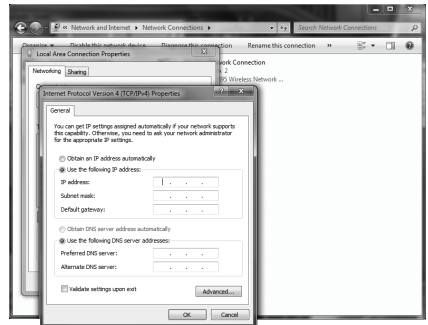
Note 1: For security concerns, Do NOT connect to an unsecured network, otherwise, the transmitted information without encryption might be visible to others.

Note 2: Enter the network security key if necessary.



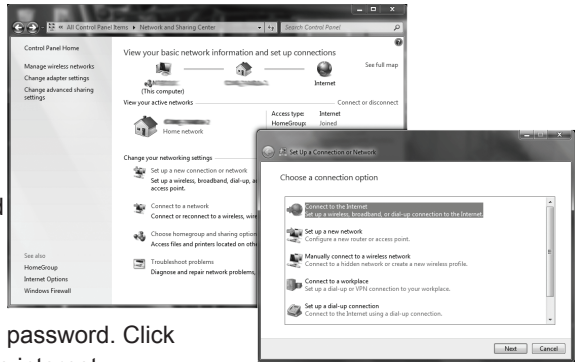
Configuring wired connection Using a static IP

1. Right-click the network icon in the notification area and select “Open Network Connections”.
2. Right-click “Local Area Connection” and select “Properties”.
3. Highlight “Internet Protocol (TCP/IP)” and click “Properties”.
4. Select “Use the following IP address”.
5. Enter your IP address, subnet mask and Default gateway.
6. Enter the preferred DNS server address if necessary.
7. After entering all of the related values, click “OK” to finish the configuration.



Using a dynamic IP (PPPoE connection)

1. Repeat Step 1-3 in the previous section.
2. Select “Obtain an IP address automatically” and click “OK”.
3. Click “Create a new connection” to start the NEW Connection Wizard.
4. Click “Next”.
5. Select “Connect to the Internet” and click “Next”.
6. Select “Set up my connection manually”.
7. Select your connection type and click “Next”.
8. Enter your ISP Name and click “Next”.
9. Enter your User name and Password. Click “Next”.
10. Click “Finish” to finish the configuration.
11. Enter your user name and password. Click “Connect” to connect to the internet.

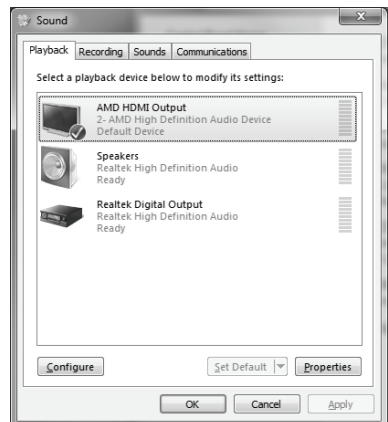


Note: Contact your internet Service Provider (ISP) if you have problems connecting to the network.

Configuring audio output via an HDMI device

Follow the steps below to enable audio output via HDMI when connecting the ZOTAC ZBOX nano XS to a TV or receiver via HDMI.

1. Access the Sound settings via the system Control Panel.
2. Under Playback devices, click “AMD HDMI Output”.
3. Click the “Set as Default” in the lower right hand corner.
4. Click “OK” to exit the setup.



ZOTAC[®]
It's Time to Play.

WWW.ZOTAC.COM



291-MA260-01G6F