

ZOTAC

# ZBOX

*Giga*



**ZOTAC ZBOX Giga ID70 PLUS**  
**USER'S MANUAL**

# ZOTAC ZBOX Giga User's Manual



No part of this manual, including the products and software described in it, may be reproduced, transmitted, transcribed, stored in a retrieval system, or translated into any language in any form or by any means, except documentation kept by the purchaser for backup purposes, without the express written permission of ZOTAC.

Products and corporate names mentioned in this manual may not be registered trademarks or copyrights of their respective companies, and are used for identification purposes only. All trademarks are the property of their respective owners.

Every effort has been made to ensure that the contents of this manual are correct and up to date. However, the manufacturer makes no guarantee regarding the accuracy of its contents, and reserves the right to make changes without prior notice.

**CAUTION:**

Risk of explosion if the battery is replaced with an incorrect type. Batteries should be recycled where possible. Disposal of used batteries must be in accordance with local environmental regulations.

---

## Table of Contents

<b>Product specifications</b>	<b>3</b>
<b>Safety information</b>	<b>4</b>
Setting up your system	4
Care during use	4
<b>Welcome</b>	<b>5</b>
Package contents	5
<b>Getting to know your ZOTAC ZBOX Giga</b>	<b>6</b>
Front view	6
Rear view	7
<b>Setting up the ZOTAC ZBOX Giga</b>	<b>9</b>
IR receiver	11
Remote control	11
Function keys	11
Lithium cell installation	12
<b>Installing drivers and software</b>	<b>13</b>
Installing an operating system	13
Installing system drivers	13
<b>Using your ZOTAC ZBOX Giga</b>	<b>14</b>
Configuring wireless connection	14
Configuring wired connection	14
Using a static IP	14
Using a dynamic IP (PPPoE connection)	15

---

## Product specifications

### Chipset

- Intel® Z68 Chipset
- Support Processor, Memory and Graphics Processor over clocking performance

### Product Dimensions

- 210mm x 210mm x 67.5mm

### Microprocessor support

- Intel® Core™ i3-2100T (3M Cache, 2.50 GHz)

### Onboard graphics

- Integrated Intel® HD Graphics 2000
- DX10.1 and OpenGL 3.0 are supported
- 3D Graphics Rendering Enhancements
- One HDMI port, one DisplayPort and two DVI-I ports output support

### Memory support

- Supports 1 GB/2 GB/4 GB DDR3 SO-DIMM devices
- Two 204-pin SO-DIMMs DDR3-1333 (4 GB DDR3 included)

### USB ports

- Two USB 2.0 ports & two USB 3.0 ports

### Storage

- Supports one 2.5-inch SATA HDD or SSD (320 GB HDD included)
- One eSATA port

### Network support

- Gigabit (10/100/1000Mbps) LAN
- IEEE 802.3 compatible

### WiFi/BT support

- Compliant with IEEE802.11b/g/n standard
- Fully qualified Bluetooth v3.0

### Audio

- 8 channel High Definition Audio (including one optical SPDIF output port)
- One SPDIF-out header on board

### Operating System support

- Microsoft Windows® XP, Windows® Vista and Windows 7
- 32-bit and 64-bit support

### Green Function

- ACPI (Advanced Configuration and Power Interface) compatible


## Bluray Combo Driver Support

- BD read compliant, max speed: 4X
- DVD read and write compliant, max speed: 8X
- CD read and write compliant, max speed: 24X
- Supports 8cm & 12cm diameter
- Supports SMART-X (Smart Monitoring & Adjusting Read-speed Technology for eXtraction) and Seamless Link® (Smart Monitoring & Adapting Recording Technology for Burning) function

## Safety information

Your ZOTAC ZBOX is designed and tested to meet the latest standards of safety for information technology equipment. However, to ensure your safety, it is important that you read the following safety instructions.

### Setting up your system

- ❖ Read and follow all instructions in the documentation before you operate your system.
  - ❖ Do not use this product near water or a heat source such as a radiator.
  - ❖ Set up the system on a stable surface with the provided stand. Never use the system alone without the stand.
  - ❖ Openings on the chassis are for ventilation. Do not block or cover these openings. Make sure you leave plenty of space around the system for ventilation. Never insert objects of any kind into the ventilation openings.
  - ❖ Use this product in environments with ambient temperatures between 0°C and 35°C.
-  If you use an extension cord, please use the UL listed cord and make sure that the total ampere rating of the devices plugged into the extension cord does not exceed its ampere rating.

### Care during use

- ❖ Do not walk on the power cord or allow anything to rest on it.
- ❖ Do not spill water or any other liquids on your system.
- ❖ When the system is turned off, a small amount of electrical current still flows. Always unplug all power, modem, and network cables from the power outlets before cleaning the system.
- ❖ If you encounter the following technical problems with the product, unplug the power cord and contact a qualified service technician or your retailer.
  - The power cord or plug is damaged.
  - Liquid has been spilled into the system.
  - The system does not function properly even if you follow the operating instructions.
  - The system was dropped or the cabinet is damaged.
  - The system performance changes.

## Welcome

Congratulations on your purchase of the ZOTAC ZBOX Giga mini-PC. The following illustration displays the package contents of your new ZOTAC ZBOX Giga. Please contact your retailer if any of the below items are damaged or missed.

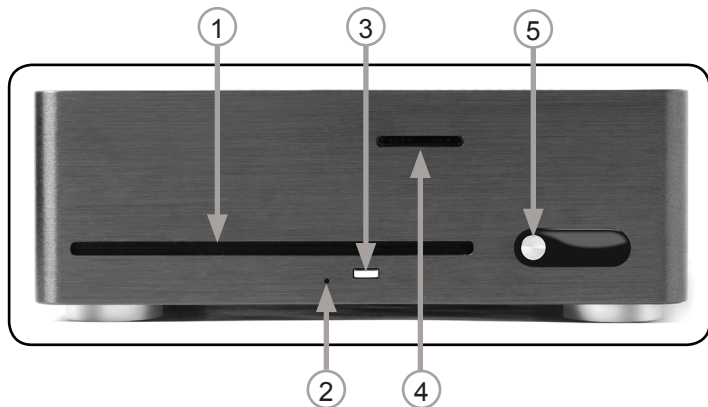
### Package contents

- 1 x ZOTAC ZBOX Giga PLUS
- 1 x AC Adapter
- 1 x DVI-to-VGA Adapter
- 1 x Power Cord
- 2 x WiFi Antennas
- 1 x Remote Control with 2 x CR2032 batteries
- 1 x USB Extended IR Receiver for Remote Control
- 1 x PowerDVD 10 Blu-ray 3D Software
- 1 x Support DVD
- 1 x User Manual & Warranty Card
- 1 x Quick Start Guide



## Getting to know your ZOTAC ZBOX Giga

### Front view



Refer to the diagram below to identify the components on this side of the system

#### 1. Optical drive

The optical drive is a slot-in type drive which supports compact discs (CD), digital video discs (DVD) and Blu-ray discs (BD).

#### 2. Blu-ray drive emergency eject

Users can use a pin to insert into the Blu-ray drive emergency eject pin-hole to manually eject disc.

#### 3. Optical drive eject button

The optical drive eject button ejects the disc from the optical drive.

#### 4. 6-in-1 Memory card slot

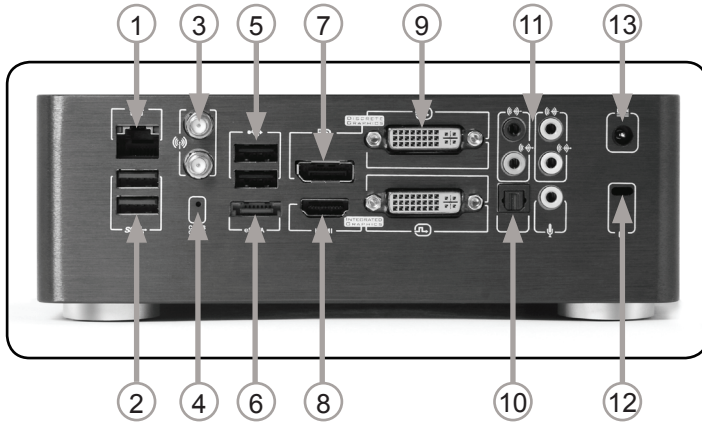
The built-in memory card reader reads and writes MMC/SD/SDHC/MS/MS Pro/xD cards used in devices such as digital cameras, MP3 players, mobile phones and PDAs.

#### 5. Power switch

The power switch turns the mini-PC ON and OFF.

Note: The power adapter may become warm to hot when in use. Do not cover the adapter and keep it away from your body.

## Rear view



Refer to the diagram below to identify the components on this side of the system.

### 1. Ethernet port

The eight-pin RJ-45 LAN port supports standard Ethernet cable for connection to a local area network (LAN) with speeds of 10/100/1000Mbps.

### 2. USB 3.0 ports

The USB 3.0 ports support the SuperSpeed USB 3.0 devices and are backwards compatible with USB 2.0/1.1 devices. Use the ports for USB 3.0 devices for maximum performance with USB 3.0 compatible devices.

### 3. WiFi antenna connector

The WiFi antenna connector supports WiFi antenna module.

### 4. Clear CMOS pin-hole

Users can use a pin to insert into the Clear CMOS pin-hole to manually clear CMOS.

### 5. USB 2.0 ports

The USB (Universal Serial Bus) ports are compatible with USB devices such as keyboards, mice, cameras and hard disk drives.

### 6. eSATA port

The external SATA port is compatible with e.SATA devices such as external hard drives and Blu-ray drives.



## **7. DisplayPort**

DisplayPort supports both external (box-to-box) and internal (laptop LCD panel) display connections.

## **8. HDMI output**

The HDMI (High Definition Multimedia Interface) output supports Full HD 1080p displays such as an HDTV or monitor.

## **9. DVI-I ports**

The DVI-I ports support DVI-I (Digital Visual Interface-I) cables.

## **10. Optical SPDIF output**

The optical SPDIF output supports optical SPDIF output cable.

## **11. Audio ports**

Use the audio ports to connect audio devices.

## **12. Safety lock**

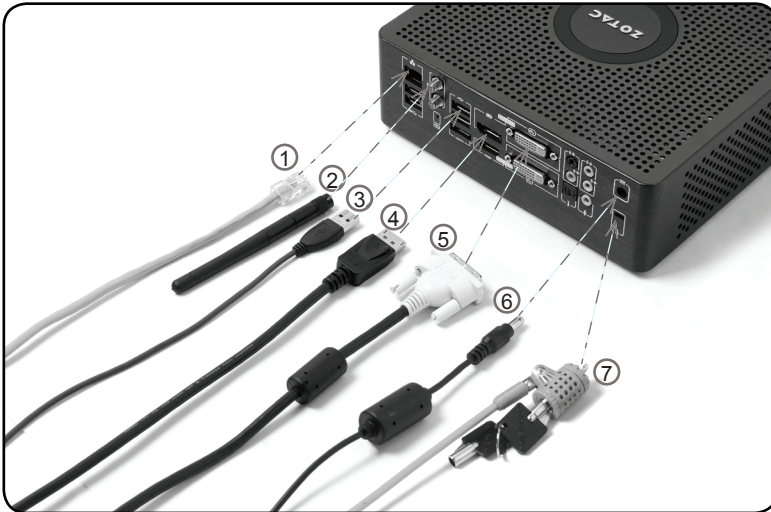
Connects to compatible Kensington Safety Lock.

## **13. Power input (DC19V)**

The supplied power adapter converts AC power to DC power for use with this jack. Power supplied through this jack supplies power to the mini-PC. To prevent damage to the mini-PC, always use the supplied power adapter.

## Setting up the ZOTAC ZBOX Giga

Please connect the peripherals before using the ZOTAC ZBOX Giga.



### 1. Connecting to a home network

Connect one end of a network cable to the LAN port on the system rear panel and the other end to a network hub, switch or router.

### 2. Connecting a WiFi antenna module

Connect a WiFi antenna module to the WiFi antenna connector.

### 3. Connecting USB 2.0 device

Connect USB 2.0 devices like wired/wireless keyboards (varying with areas), mouse devices and printers to the USB 2.0 ports.

### 4. Connecting a DisplayPort display

Connect the DisplayPort connector to the DP port.

### 5. Connecting a DVI port

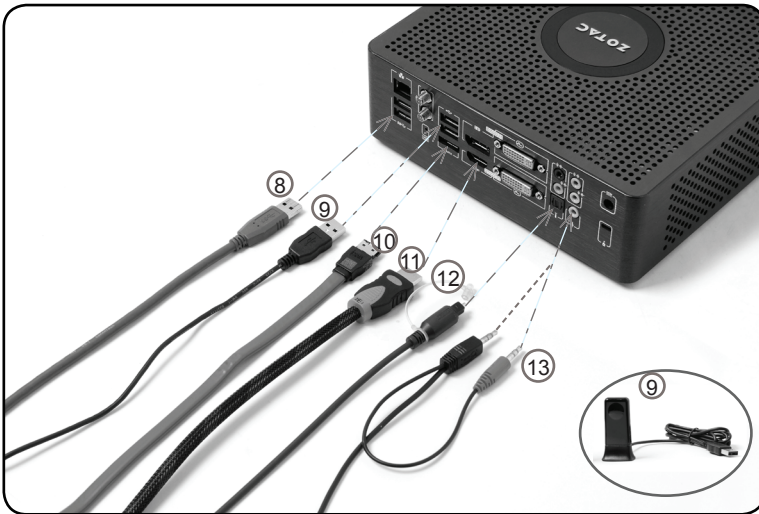
Connect the DVI connector to the DVI port.

### 6. Turning on the system

Connect the supplied AC adapter to the DC IN jack on the system rear panel and then press the power switch on the front panel to turn on the system.

### 7. Connecting to a Kensington safety lock

Connect Kensington Safety Lock to ZBOX Giga and lock.



#### **8. Connecting USB 3.0 device**

Connect USB 3.0 devices such as external hard drives, SSDs and flash drives to the USB 3.0 port.

#### **9. Connecting an external USB IR receiver**

The USB 2.0 ports also support external USB IR receiver.

#### **10. Connecting an eSATA device**

Connect one end of an eSATA device to the eSATA port.

#### **11. Connecting to an HDMI display**

Connect one end of an HDMI cable to the HDMI port on the system rear panel and the other end to a HDMI-compatible display such as an HDTV or monitor. (When both the HDMI and the DP are connected, the audio output is from HDMI by default.)

#### **12. Connecting an optical S/PDIF output**

Connect a digital audio device via optical S/PDIF output.

#### **13. Connecting audio ports**

Connect audio devices (such as microphone, back surround and side surround) to the audio ports.

Note: When your ZOTAC ZBOX Giga is not in use, unplug the power adapter or switch off the AC outlet to conserve power.

## IR receiver

Enjoy more of your favorite entertainment by MCE (Media Center Edition) remote controller with USB IR receiver.



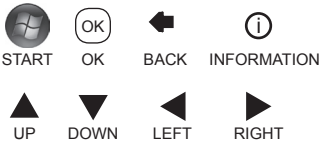
External USB IR receiver

## Remote control

ZOTAC ZBOX Giga is shipped with a remote control. Follow the instructions below to use the remote control.

## Function keys

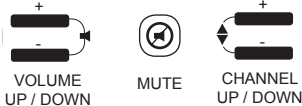
### Navigation Buttons



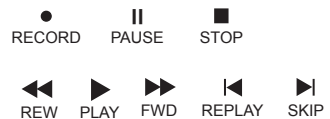
### Shortcut Buttons



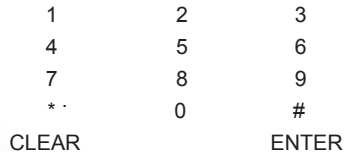
### Audio and Video Buttons



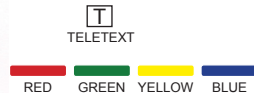
### Playback Buttons



### Numeric Keypad




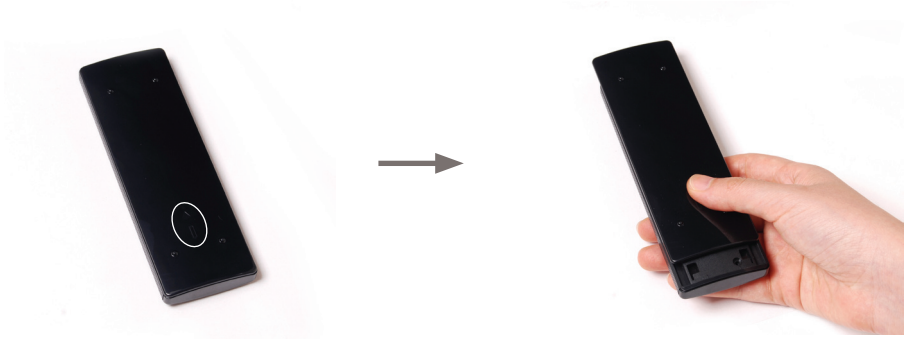
### Teletext Buttons



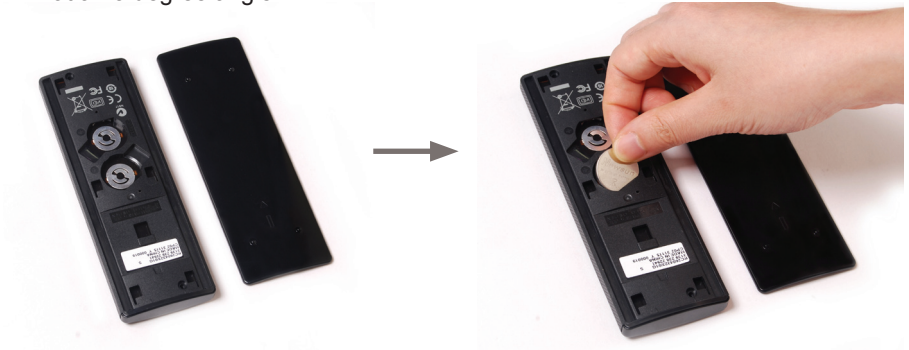
**Note:** Some remote control functions listed above are only available with the relative hardware equipments. If the hardware equipments you adopt are not compatible with the system, you are unable to use these functions. This product is designed to meet MCE standards.

## Lithium cell installation

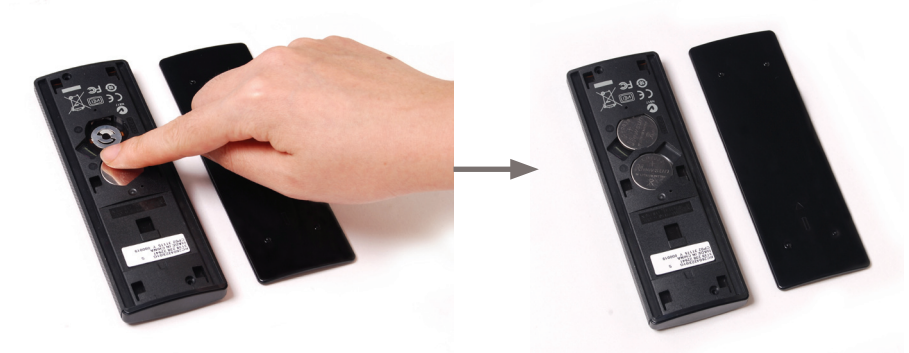
1. Locate the arrow  on the rear cover of the remote control, and push the cover as the arrow direction.



2. Remove the rear cover, and insert the CR2032 lithium cells into the battery jar at a 45 degree angle.



3. Gently press down on the CR2032 lithium cells, and reinstall the rear cover.



## Installing drivers and software

### Installing an operating system

The ZOTAC ZBOX Giga does not ship with an operating system preinstalled. An operating system must be installed before the ZOTAC ZBOX Giga can be used. The following operating systems are supported:

- Windows® XP
- Windows® Vista
- Windows® 7

Follow the instructions below to install an operating system:

1. Insert disk for operating system into the optical drive.
2. Wait for the ZOTAC ZBOX Giga to boot from the disk.
3. Follow the onscreen directions to install the operating system.
4. Install system drivers to gain full functionality of the ZOTAC ZBOX Giga hardware and features.

### Installing system drivers

Before you can use the full features of the ZOTAC ZBOX Giga, the system drivers must be installed. The following types of operating systems are supported by the ZOTAC ZBOX Giga driver DVD:

- Windows® XP
- Windows® Vista
- Windows® 7

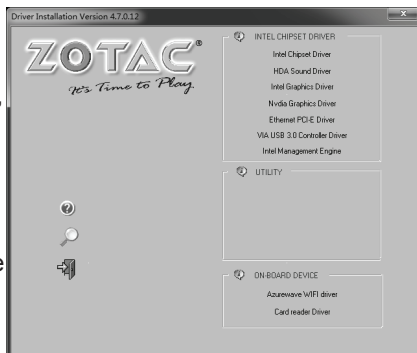
Follow the instructions below to install the system drivers:

1. Insert the ZOTAC ZBOX Giga driver DVD. If autorun is enabled, the driver installation main menu will show up automatically. Windows Vista may ask for further confirmation, please click "Allow" or "OK" to proceed.

Note: If autorun is disabled, you can click the file Launch.EXE to bring up the driver installation main menu.

2. The following drivers are available on the DVD:

- Intel Chipset Driver
- HDA Sound Driver
- Intel Graphics Driver
- Nvidia Graphics Driver
- Ethernet PCI-E Driver



- VIA USB 3.0 Controller Driver
- Intel Management Engine
- Azurewave WIFI driver
- Card reader Driver

Note: Each driver must be installed individually to ensure proper operation of the ZOTAC ZBOX Giga.

3. Select the driver you want to install. The driver installer should launch.
4. Follow the onscreen instructions for the selected driver to install.
5. Restart the system.

## Using your ZOTAC ZBOX Giga

### Configuring wireless connection

Please follow the instructions below to connect to a wireless network:

1. Double-click the crossed wireless network icon (pic) in the notification area.
2. Select the wireless network you want to connect to from the list and click Connect.
3. After connection was established, you will see “Connected”.

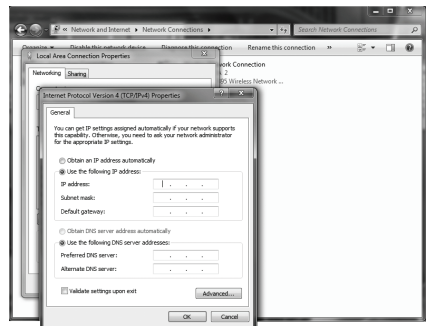
Note 1: For security concerns, Do NOT connect to an unsecured network, otherwise, the transmitted information without encryption might be visible to others.

Note 2: Enter the network security key if necessary.



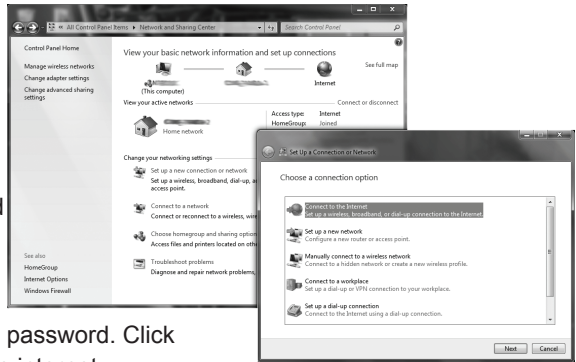
### Configuring wired connection Using a static IP

1. Right-click the network icon in the notification area and select “Open Network Connections”.
2. Right-click “Local Area Connection” and select “Properties”.
3. Highlight “Internet Protocol (TCP/IP)” and click “Properties”.
4. Select “Use the following IP address”.
5. Enter your IP address, subnet mask and Default gateway.
6. Enter the preferred DNS server address if necessary.
7. After entering all of the related values, click “OK” to finish the configuration.



## Using a dynamic IP (PPPoE connection)

1. Repeat Step 1-3 in the previous section.
2. Select “Obtain an IP address automatically” and click “OK”.
3. Click “Create a new connection” to start the NEW Connection Wizard.
4. Click “Next”.
5. Select “Connect to the Internet” and click “Next”.
6. Select “Set up my connection manually”.
7. Select your connection type and click “Next”.
8. Enter your ISP Name and click “Next”.
9. Enter your User name and Password. Click “Next”.
10. Click “Finish” to finish the configuration.
11. Enter your user name and password. Click “Connect” to connect to the internet.



Note: Contact your internet Service Provider (ISP) if you have problems connecting to the network.





**ZOTAC**<sup>®</sup>  
*It's Time to Play.*

[WWW.ZOTAC.COM](http://WWW.ZOTAC.COM)



291-MA186-01C2F