



**PUSH
YOUR
SKILL**

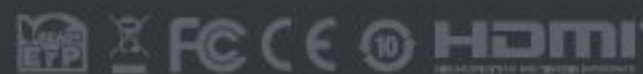
GO TO➔

ZOTAC-CUP.COM

ZOTAC®
ZOTAC.COM

LIVE TO GAME_

-  facebook.com/zotac
-  twitter.com/zotac
-  youtube.com/zotac_official
-  vimeo.com/zotac
-  instagram.com/zotac_official



 **ZOTAC GAMING**

MEK MINI
PC GAMING SYSTEM

**USER'S
MANUAL**



ZOTAC GAMING MEK MINI GAMING PC

User's Manual



No part of this manual, including the products and software described in it, may be reproduced, transmitted, transcribed, stored in a retrieval system, or translated into any language in any form or by any means, except documentation kept by the purchaser for backup purposes, without the express written permission of ZOTAC.

Products and corporate names mentioned in this manual may be registered trademarks or copyrights of their respective companies, and are used for identification purposes only. All trademarks are the property of their respective owners.

Every effort has been made to ensure that the contents of this manual are correct and up to date. However, the manufacturer makes no guarantee regarding the accuracy of its contents, and reserves the right to make changes without prior notice.

CAUTION:

Risk of explosion if the battery is replaced with an incorrect type. Batteries should be recycled where possible. Disposal of used batteries must be in accordance with local environmental regulations.

Table of Contents

Product specifications	3
Safety information	4
Setting up your system	4
Care during use	4
Welcome	5
Package contents	5
Getting to know your ZOTAC GAMING MEK MINI Gaming PC	6
Top view	6
Rear view	7
Setting up your ZOTAC GAMING MEK MINI Gaming PC	9
Configuring your ZOTAC GAMING MEK MINI Gaming PC	11
Configuring a wireless connection	11
Configuring a wired connection	11
Using a static IP	11
Configuring audio output	12
Mouse & Keyboard (Optional)	13
Combination keys	13
Backlight mode	13
Game mode and button customization	14
Configure your ZOTAC GAMING MEK MINI Gaming PC	15
Configuring a wireless connection	15
Installing Killer Control Center	15

Product specifications

For GM206SC5R0B / GM206SC5R1B

- ❑ **Microprocessor support**
 - ❖ Intel Core i5-9400F (six-core 2.9 GHz, up to 4.1 GHz)
- ❑ **Onboard Graphics support**
 - ❖ ZOTAC GAMING GeForce RTX 2060 Super w/ 8GB GDDR6
 - ❖ Three DisplayPort 1.4, one HDMI 2.0 (max 4 output)
- ❑ **System Memory support**
 - ❖ Two 8GB DDR4 2666MHz SO-DIMMs pre-installed (up to 32GB)
- ❑ **Onboard Serial ATA**
 - ❖ SATA 6.0 Gb/s transfer rates
 - ❖ Support one 2.5-inch SATA HDD or SSD (max 9.5mm height) (1TB HDD pre-installed)
- ❑ **Expansion slot**
 - ❖ One M.2 PCIe x4 / SATA SSD slot (240GB NVMe SSD pre-installed)
 - ❖ One Optane memory slot (22/42, 22/80)
- ❑ **USB Ports**
 - ❖ Four USB 3.1 ports
 - ❖ One USB 3.0 Type-A port, one USB 3.0 Type-C port
- ❑ **Onboard Dual LAN**
 - ❖ Support one 10/100/1000 Mbps Killer Ethernet
 - ❖ Support one 10/100/1000 Mbps Ethernet
 - ❖ Support IEEE 802.3
- ❑ **WiFi/Bluetooth support**
 - ❖ Compliant with IEEE802.11ac standard
 - ❖ Bluetooth 5
- ❑ **Onboard Audio**
 - ❖ Stereo analog audio output and Microphone input
- ❑ **Power Supply**
 - ❖ Two 19.5V/230W
- ❑ **Operating systems**
 - ❖ Windows 10 Home 64-bit pre-installed
- ❑ **Product Size**
 - ❖ 259mm x 139mm x 259mm

Safety information

Your ZOTAC GAMING MEK MINI Gaming PC is designed and tested to meet the latest standards of safety for information technology equipment. However, to ensure your safety, it is important that you read the following safety instructions.

Setting up your system

- ❖ Read and follow all instructions in the documentation before operating your system.
- ❖ Do not use this product near water or a heat source such as a radiator.
- ❖ Set up the system on a stable surface.
- ❖ Openings on the chassis are for ventilation. Do not block or cover these openings. Make sure you leave plenty of space around the system for ventilation. Never insert objects of any kind into the ventilation openings.
- ❖ Use this product in environments with ambient temperatures between 0°C and 35°C.

☞ If you use an extension cord, please use the UL listed cord and make sure that the total ampere rating of the devices plugged into the extension cord does not exceed its ampere rating.

Care during use

- ❖ Do not walk on the power cord or allow anything to rest on it.
- ❖ Do not spill water or any other liquids on your system.
- ❖ When the system is turned off, a small amount of electrical current still flows. Always unplug all power, modem, and network cables from the power outlets before cleaning the system.
- ❖ If you encounter the following technical problems with the product, unplug the power cord and contact a qualified service technician or your retailer.
 - The power cord or plug is damaged.
 - Liquid has been spilled onto the system.
 - The system does not function properly even if you follow the operating instructions.
 - The system was dropped or the cabinet is damaged.

Getting to know your ZOTAC GAMING MEK MINI Gaming PC Top view



1. Headphone/Audio out jack

The stereo headphone jack (3.5mm) is used to connect the system's audio out signal to gaming headset.

2. Microphone jack

The microphone jack is designed to connect the microphone used for easy connection with gaming headset.

3. USB 3.0 Type-C port

The type-C USB 3.0 port supports the SuperSpeed USB 3.0 devices. Use this port for USB 3.0 devices for maximum performance with USB 3.0 compatible devices.

4. USB 3.0 port

The USB 3.0 port supports the SuperSpeed USB 3.0 devices and is backwards compatible with USB 2.0/1.1 devices. Use this port for USB 3.0 devices for maximum performance with USB 3.0 compatible devices.

5. Memory card reader

The built-in memory card reader reads SD/SDHC/SDXC cards used in devices such as digital cameras, MP3 players, mobile phones and PDAs.

6. Power LED

The power LED is always ON when power is on.

7. WiFi LED

The WiFi LED blinks when data is being transfered over WiFi.

8. Hard disk LED

The hard disk LED blinks when data is being written into or read from the hard disk drive.

9. Power button

The power button allows powering ON and OFF the system. The ring LED will be lit while system is On.

Rear view



1. WiFi antenna connectors

The WiFi antenna connector supports WiFi antenna module.

2. USB 3.1 ports

The USB 3.1 port supports the SuperSpeed USB 3.1 device. Use this port for USB 3.1 devices for maximum performance with USB 3.1 compatible devices.

3. Side panel lock

Push the side panel lock to lock or unlock the side panel.

4. LAN ports

The eight-pin RJ-45 LAN ports support standard Ethernet cables for connection to a local network. The LAN port marked with K is for Killer Ethernet.

5. Power inputs

The supplied power adapter converts AC power to DC power for use with this power port. To prevent damage to the mini-PC, always use the supplied power adapter.

6. DisplayPorts

DisplayPort supports both external (box-to-box) and internal (laptop LCD panel) display connections.

7. HDMI port

The HDMI (High Definition Multimedia Interface) port supports a UHD device such as an LCD TV or monitor to allow viewing on a larger external display.

 ***Do not block ventilation outlet for warm air exhaust.***

Setting up your ZOTAC GAMING MEK MINI Gaming PC

You need to connect peripherals before using your ZOTAC GAMING MEK MINI Gaming PC.



1. Connecting WiFi antenna modules

Connect WiFi antenna modules to the WiFi antenna connectors.

2. Connecting to USB devices

Connect USB devices such as keyboard, mouse, speakers or headphones, and other USB devices to the USB ports on the system rear panel.

3. Connecting to network devices

Connect one end of a network cable to the LAN port on the system rear panel and the other End to a hub or switch. The LAN port marked with K is for Killer Ethernet.

4. Connecting to displays

Connect display to DP/HDMI if port available.

5. Connecting to power

Connect power to the power input.

6. Turning on the system

Plug the power cord into the power connector firmly and connect the other end to AC outlet. Then press the power switch on the top panel to turn on the system.

☞ When your ZOTAC GAMING MEK MINI Gaming PC is not in use, unplug the power socket from AC outlet to save on power consumption.

Configuring your ZOTAC GAMING MEK MINI Gaming PC

Configuring a wireless connection

Please follow the instructions below to connect to a wireless network:

1. Double-click the wireless network icon (pic) in the notification area.
2. Select the wireless network you want to connect to from the list and click Connect.
3. After connection is established, you will see “Connected.”

Note 1: For security concerns, Do NOT connect to an unsecured network, otherwise, the transmitted information without encryption might be visible to others.

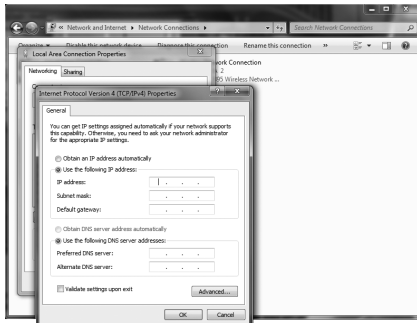
Note 2: Enter the network security key if necessary.



Configuring a wired connection

Using a static IP

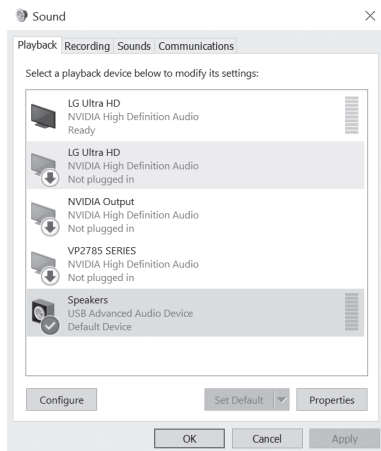
1. Connect one end of the Ethernet cable to your Internet Service Provider (ISP) modem/router.
2. Connect the other end to the Ethernet port in the rear of the MEK MINI Gaming PC.
3. Highlight “Internet Protocol (TCP/IP)” and click “Properties”.
4. Select “Use the following IP address”.
5. Enter your IP address, subnet mask and Default gateway.
6. Enter the preferred DNS server address if necessary.
7. After entering all of the related values, click “OK” to finish the configuration.



Configuring audio output

Follow the steps below to enable audio output when connecting the MEK MINI Gaming PC to a TV or receiver via HDMI/DP/DVI adapter.

1. Access the Sound settings via the system Control Panel.
2. Under Playback devices, click the display device that corresponds with your audio compatible display.
3. Click the “Set Default” button in the lower right hand corner.
4. Click “OK” to exit the setup.



Mouse & Keyboard (Optional)

Mouse and Keyboard are ready to use once connected to the USB port of the MEK MINI Gaming PC.

Adjust the Mouse DPI sensitivity by pressing the button behind the Scroll wheel of the Mouse. Refer to below list for Keyboard shortcut features and lighting.

Combination keys

FN+ESC = Turn off/on Backlight

FN+F1 = Multimedia

FN+F2 = Play / Pause

FN+F3 = Stop

FN+F4 = Volume up

FN+F5 = Volume down

FN+F6 = Volume Mute

FN+WIN_L = Lock/Un-lock Win&APP

FN+Delete = Long press 3 seconds back to default setting

Backlight mode

FN+↑ = Increased brightness

FN+↓ = Reduced brightness

FN+← = Decreased speed

FN+→ = Increased speed

FN+Prt SC = 10 kinds of lighting effects mode switch

Game mode and button customization

Combine keys and function	Highlight the keys
[Fn] + [1] (Game Mode1)	ASDW ↑↓↔→ ESC
[Fn] + [2] (Game Mode2)	ASDW Ctrl Shift Alt Space RGQEB 1-5 Tab F1-F3 Home End PgUp PgDn PrtSc Scroll lock
[Fn] + [3] (Game Mode3)	QWERTASDFGCV 1-7 Ctrl Shift
[Fn] + [4] (Game Mode4)	QWERASDGXZFKLHMNUYTP Space 1-0 Ctrl Shift Alt
[Fn] + [5] (Game Mode5)	QWER DGFBV Ctrl Alt Tab Space ~ 1-6 Esc
[Fn] + [6] (Game Mode6)	ASDWR ↑↓↔→ Ctrl Shift Alt
[Fn] + [7] (Game Mode7)	AFSWRE Ctrl Shift Alt Space ↑↓↔→ ZXCV 1234
[Fn] + [8] (Game Mode8)	QWERDFB 1-6
[Fn] + [9] (Custom mode1)	Custom LED light on or off for each button, press FN + 9 or FN + 0 to enter the button custom backlight mode, the default 2 groups custom game backlight, each press to switch a backlight effect. If you want to modify the current backlight effect, press FN +ScrLk, the indicator light flashes, then you can customize the changes, after the modification is complete, press FN + PAUSE again to save the changes.
[Fn] + [0] (Custom mode2)	
[Fn] + [PAUSE] / [Fn] + [ScrLk] (Recording key/storage key)	

Configuring your ZOTAC GAMING MEK MINI Gaming PC

Configuring a wireless connection

Please follow the instructions below to connect to a wireless network:

1. Double-click the wireless network icon (pic) in the notification area.
2. Select the wireless network you want to connect to from the list and click Connect.
3. After connection is established, you will see “Connected.”

Note 1: For security concerns, Do NOT connect to an unsecured network, otherwise, the transmitted information without encryption might be visible to others.

Note 2: Enter the network security key if necessary.



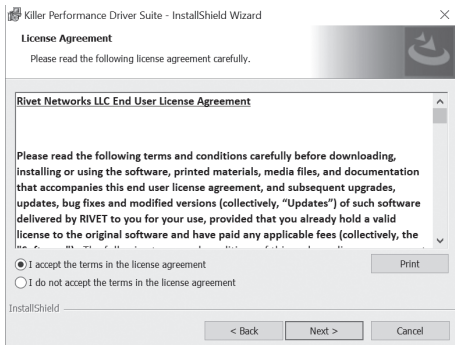
Installing Killer Control Center

Before you can use the full feature of Killer Lan, please follow the instructions below to install the Killer Control Center.

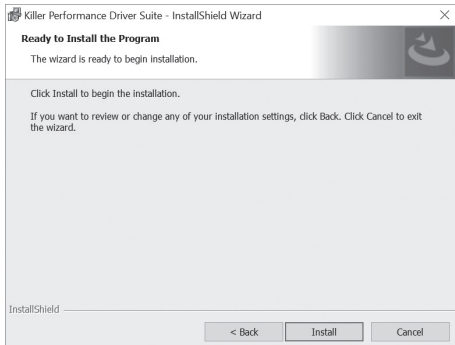
1. Run Killer Wireless Network Driver, click “Next” when the following dialog box displays.



2. Accept the License agreement.



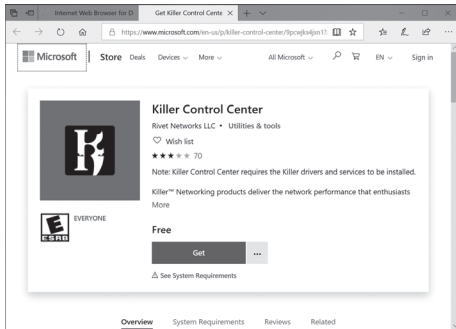
3. Click "Install" to begin the installation. (Please make sure that the network is connected before the installation)



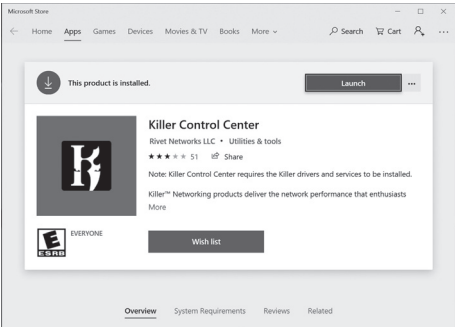
4. Check ☒ before “Download Killer Control Center”, and click “Finish”.



5. Click “Get” to download the Killer Control Center.



6. When the installation is complete, click “Launch” to run the Killer Control Center.



7. Killer Control Center displays as below.

