

+

+

+

+

+

+



+

+

+

+

+

P R O D U C T C A T A L O G

A P R I L 2 0 2 4

INTRODUCTION

Our Brand Story
The Original Mini PC

PERFORMANCE LARGER THAN ITS SIZE

Do With Less
Do With More

Compact Footprint
Versatile

Robust Connectivity
Automate Power Recovery

PRODUCT SERIES

Engineered For Many Applications

Entertainment

E Series
VR Series

Fanless Solutions

C Series
P Series

Business and Daily Computing

M Series

Creation

Q Series

Healthcare

Healthcare Series

Compare ZBOX Series
Choose your Own ZBOX
Awards
Media Reviews



INTRODUCTION



ZOTAC creates the Original Mini PC by

shrinking the desktop PC into a miniature form,



beginning the trend of space-saving PCs.

OUR BRAND STORY

**WE ARE ZOTAC, A GLOBAL MANUFACTURER OF INNOVATION,
PERFORMANCE, AND TECHNOLOGY.**

ZOTAC derives its name from the words "zone," for being distinct in the PC components and systems industry, and "tact," for our superior skill, expertise, quality, and manufacturing capabilities.

With "PUSH THE LIMIT" as our motto, we are determined to redefine the standard of graphics cards, Mini PCs, and accessories to break into new realms and connect people with

fast-moving technologies and experiences such as eSports and VR gaming.

Since our establishment in 2006 under the umbrella of PC Partner, we have put innovation at the forefront of our philosophy, and have dedicated a lot of energy to developing new technologies in order to enrich user experience.

THE ORIGINAL MINI PC

INNOVATING THE PC IN EVERY BEST MINI WAY

As the First and Original Mini PC maker, we are dedicated to making the ZBOX ever more powerful and versatile, from the palm sized ZBOX nano to the extreme smartphone-sized ZBOX pico, following the first gaming and VR-ready Mini PC and the world's premier VR backpack.

We believe there is a Mini PC for everyone and for any computing problem. Whether you are an architect with the next Hagia Sophia in mind, or simply wanting to enjoy the evening with intense gaming, we have a Mini PC that is the perfect fit.

PERFORMANCE LARGER THAN ITS SIZE

“

The small footprint design and rich
expansion capabilities make ZBOX Mini PCs
ideal for the needs of diverse projects.”



PERFORMANCE LARGER THAN ITS SIZE

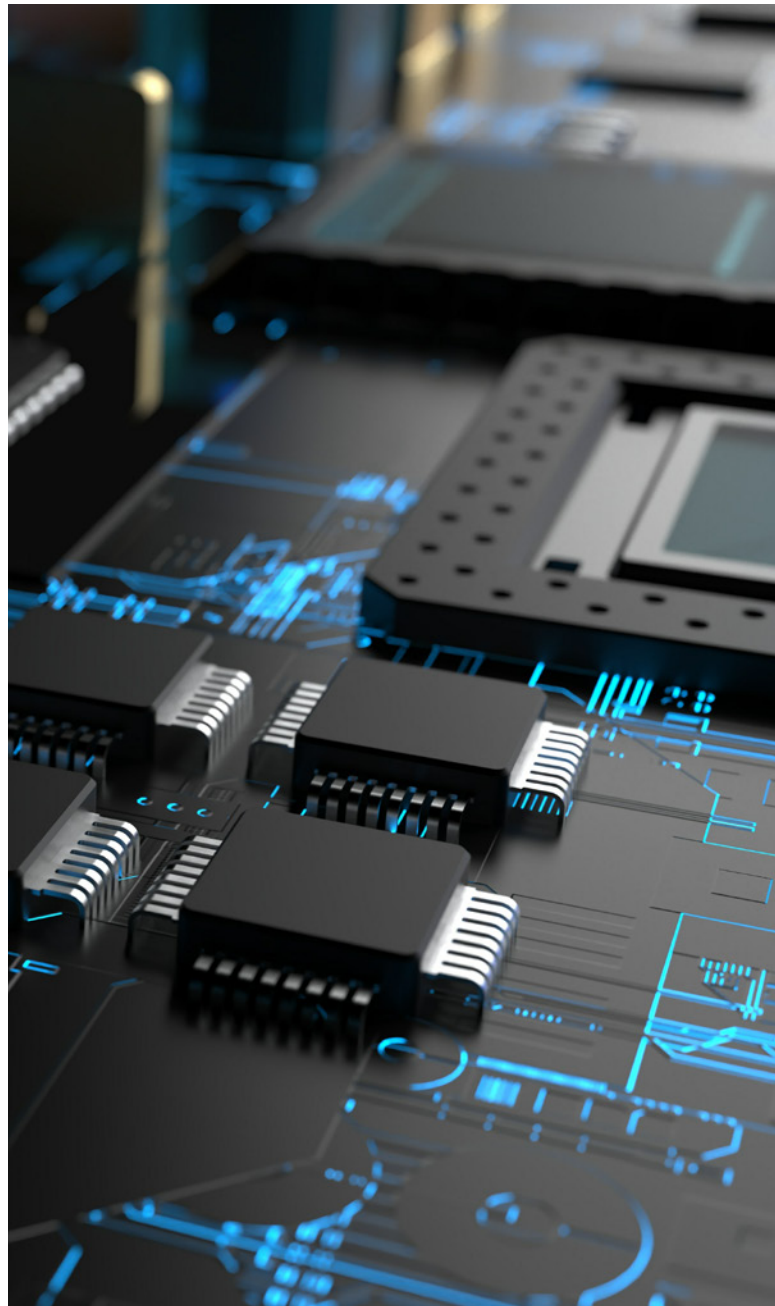
DO WITH LESS



Using less than 10 watts when idle, you'll be saving more than just on space and upfront costs - the smart investment for your bills and the planet.

*idle power use may vary by model

DO WITH MORE



With powerful multi-core processors, do what you need done faster.

PERFORMANCE LARGER THAN ITS SIZE

COMPACT FOOTPRINT



ZBOX gets things done just like a PC in a much more portable package, bringing endless usable possibilities.

VERSATILE



Choose from multiple sized solutions that are capable of powerful performance and nimble placement provided by the designed VESA mounting compatibility built in. Place the system where you want. Lay it on the desk, hide it behind a display, or hang it on the wall.

PERFORMANCE LARGER THAN ITS SIZE

ROBUST CONNECTIVITY



ZOTAC Mini PC Series offers a wide array of ports, featuring USB Type-C and 3.1, (Killer) Wi-Fi, Bluetooth, (Killer) Ethernet, SD card slot, headphone and microphone, HDMI, DisplayPort, VGA and more.

AUTOMATE POWER RECOVERY



With an available Power Recovery feature, the ZOTAC Mini PC can automatically power itself back on and get going when power is restored after a sudden power loss. It can even return to its last state of power or simply stay off when power is restored after a sudden power loss. Set applications to load at start up in combination with this Power Recovery feature and you have a powerful Mini PC that can continue to operate.

PRODUCT SERIES



Game and stream. Work and manage.

Surf and create. Watch and chill. Show and

market. ZBOX has a strong purposeful

line-up, each designed for general, unique,

or powerful needs to push the capabilities



and experiences beyond.

ENGINEERED FOR MANY APPLICATIONS

ENGINEERED FOR MANY APPLICATIONS

THE SMALL FOOTPRINT DESIGN AND RICH EXPANSION CAPABILITIES MAKE ZBOX MINI PCS IDEAL FOR THE NEEDS OF DIVERSE PROJECTS.



ENTERTAINMENT

ZBOX Mini PCs feature the latest processors from Intel and powerful graphics performance for a memorable experience in gaming, casino, virtual reality, servers, and more. Our VR ready systems have been deployed in theme parks, exhibitions and movie screenings to create a more engaging user experience.



FANLESS SOLUTIONS

We offer completely fanless designs that bring silent performance, longevity, and unrivaled features with an energy sipping power and efficient cooling hardware.



HEALTHCARE SERIES

A minimally discrete and durable exterior design with powerful hardware to enable the future of Healthcare centers and services. With a mountable design, rounded corners, and EN60601-1 compliance for medical electrical equipment, enable more efficient healthcare services and solutions with more powerful and smarter capabilities.



BUSINESS AND DAILY COMPUTING

ZBOX Mini PCs are designed to meet all your business and everyday PC needs. Throughout the years we have developed partnerships with world-leading providers, implementing our ZBOX Mini PCs powering digital signage, cloud solutions and networkable appliances.



CREATION

Miniature but powerful workstation solutions can pave way for more productivity. Manage your creative workflow with more efficiency, and enjoy the best possible performance for demanding creative, scientific or financial computing projects.





SERIES



FOR HARDWARE ENTHUSIASTS

**THE ZBOX "MAGNUS" E SERIES HOUSES DESKTOP
CHALLENGING PERFORMANCE TO EMPOWER GAMERS,
CREATORS AND ENTHUSIASTS. WITH POWERFUL
MULTI-CORE PROCESSORS AND EASILY EXPANDABLE
STORAGE AND MEMORY, THE ZBOX MAGNUS ALLOWS
GAMERS TO PLAY BIG WITH POWER ON PAR WITH
DESKTOP SYSTEMS MANY TIMES ITS SIZE AND WEIGHT.**

DEDICATED GRAPHICS

Take advantage of abundant graphics horsepower with a dedicated NVIDIA® GeForce® GPU for creative workflows and GPU accelerate for demanding graphic intensive needs.

GAME READY

With a powerful CPU and GPU processor and support for high-speed memory and high performance storage, MAGNUS is ready to take on today's AAA PC game titles and beyond.

DELUXE ENTERTAINMENT

Stream your gameplay or game on the largest display in the household for an at-home cinematic experience.

SEAMLESS CONNECTIVITY

Fast networking lets you lose the lag and enables downloading and uploading content with premium connectivity.

EASILY UPGRADEABLE

Designed with quick access to memory and storage of your choice. Upgrading has never been easier.

DIGITAL SIGNAGE

Show more with up to 4 simultaneous 4K displays with a compact system that can easily be tucked away behind the scenes.



MAGNUS ONE ERP74070SC

Empower your desktop with the versatile and super powered compact PC. The all-new MAGNUS ONE retains the 8.3 liter chassis of its predecessor, but the internals have been thoroughly upgraded with cutting-edge hardware, including a 14th gen Intel® Core™ i7 processor for faster processing, a ZOTAC GAMING GeForce RTX™ 4070 SUPER graphics card for high-fidelity ray-traced graphics and AI-accelerated features such as DLSS3, and other upgrades such as a UHS-II card reader for faster file transfers from SD cards. Pair those with upgradable memory and storage, a full-range of connectivity options and you have a capable machine that can deliver the best experience for daily tasks, gaming, entertainment, content creation and business in its size.

SPECIFICATIONS

- Compact 8.3 liter size
- 14th Gen Intel Core i7-14700 processor
- ZOTAC GAMING GeForce RTX 4070 SUPER 12GB GDDR6X
- Up to 64GB DDR5-5600/5200 SO-DIMM Memory support
- 2 x M.2 SSD slots, 1 x 2.5-inch SATAIII HDD/SSD bay
- 1 x HDMI 2.1a, 3 x DisplayPort 1.4a, 1 x HDMI 1.4 (integrated)
- 4 x USB 3.1, 4 x USB 3.0 (1 Type-C)
- 1 x Thunderbolt 4, 1 x UHS-II SDHC/SDXC Card Reader
- WiFi 6, Gigabit and 2.5Gbps Ethernet
- 500W 80+ Platinum power supply
- Creator Ready / 4K Ready / Gaming Ready / VR Ready
- Windows 11 ready



Windows 11



reddot winner 2021





MAGNUS EN474070C

The all-new MAGNUS EN474070C upgraded with a 14th gen Intel Core i7 mobile processor and NVIDIA GeForce RTX 4070 Laptop GPU, is a formidable tailor-made machine for creative hobbyists and professionals alike. With a discrete yet powerful cooling solution, a comprehensive array of connectivity options, and as well as an extremely compact form-factor, the MAGNUS EN474070C fits a wide variety of creative workstation and studio needs, delivering impressive performance to help content creators and their masterpieces take form.

SPECIFICATIONS

- Compact 2.65 liter size
- 14th Gen Intel Core i7-14700HX processor
- NVIDIA GeForce RTX 4070 Laptop GPU 8GB GDDR6
- Up to 64GB DDR5-5600/5200 SO-DIMM Memory support
- 2 x M.2 SSD slots
- 1 x HDMI 2.1, 2 x DisplayPort 1.4a
- 1 x Thunderbolt 4, 1 x UHS-II SDHC/SDXC Card Reader, 5 x USB 3.1
- WiFi 6, 2 x 2.5Gbps Ethernet
- Creator Ready / 4K Ready / Gaming Ready / VR Ready
- Windows 11 ready



Windows 11

HDMI®
HIGH-DEFINITION MULTIMEDIA INTERFACE



VIEW ALL
MODELS



MODEL	MAGNUS ONE ERP74070SC	MAGNUS ONE ERP74070SW	MAGNUS ONE ERP74070C
CPU	Intel Core i7-14700	Intel Core i7-14700	Intel Core i7-13700
GPU	GeForce RTX 4070 SUPER	GeForce RTX 4070 SUPER	GeForce RTX 4070
MEMORY	Dual SO-DIMM DDR5	Dual SO-DIMM DDR5	Dual SO-DIMM DDR5
STORAGE	2 x M.2 + 1 x 2.5" slot	2 x M.2 + 1 x 2.5" slot	2 x M.2 + 1 x 2.5" slot
HDMI	x 1	x 1	x 1
DISPLAYPORT	x 3	x 3	x 3
THUNDERBOLT 4	x 1	x 1	x 1
USB 3.1	x 4	x 4	x 4
USB 3.0	x 3	x 3	x 3
USB 3.0 TYPE-C	x 1	x 1	x 1
WIFI	WiFi 6	WiFi 6	WiFi 6
LAN	Gigabit LAN + 2.5GLAN	Gigabit LAN + 2.5GLAN	Gigabit LAN + 2.5GLAN
BLUETOOTH	5.2	5.2	5.2
DIMENSIONS	265.5mm x 126mm x 249mm (10.45in x 4.96in x 9.8in)	265.5mm x 126mm x 249mm (10.45in x 4.96in x 9.8in)	265.5mm x 126mm x 249mm (10.45in x 4.96in x 9.8in)

FOR HARDWARE
ENTHUSIASTS

VIEW ALL
MODELS



MODEL	MAGNUS ONE ERP74070W	MAGNUS EN474070C	MAGNUS EN474070W
CPU	Intel Core i7-13700	Intel Core i7-14700HX	Intel Core i7-14700HX
GPU	GeForce RTX 4070	GeForce RTX 4070 Laptop	GeForce RTX 4070 Laptop
MEMORY	Dual SO-DIMM DDR5	Dual SO-DIMM DDR5	Dual SO-DIMM DDR5
STORAGE	2 x M.2 + 1 x 2.5" slot	2 x M.2	2 x M.2
HDMI	x 1	x 1	x 1
DISPLAYPORT	x 3	x 2	x 2
THUNDERBOLT 4	x 1	x 1	x 1
USB 3.1	x 4	x 5	x 5
USB 3.0	x 3		
USB 3.0 TYPE-C	x 1		
WIFI	WiFi 6	WiFi 6	WiFi 6
LAN	Gigabit LAN + 2.5GLAN	Dual 2.5GLAN	Dual 2.5GLAN
BLUETOOTH	5.2	5.2	5.2
DIMENSIONS	265.5mm x 126mm x 249mm (10.45in x 4.96in x 9.8in)	210mm x 203mm x 62.2mm (8.27in x 7.99in x 2.45in)	210mm x 203mm x 62.2mm (8.27in x 7.99in x 2.45in)

FOR HARDWARE
ENTHUSIASTS

VIEW ALL
MODELS



MODEL	MAGNUS EN374070C	MAGNUS EN374070W
CPU	Intel Core i7-13700HX	Intel Core i7-13700HX
GPU	GeForce RTX 4070 Laptop	GeForce RTX 4070 Laptop
MEMORY	Dual SO-DIMM DDR5	Dual SO-DIMM DDR5
STORAGE	2 x M.2	2 x M.2
HDMI	x 1	x 1
DISPLAYPORT	x 2	x 2
THUNDERBOLT 4	x 1	x 1
USB 3.1	x 5	x 5
USB 3.0		
USB 3.0 TYPE-C		
WIFI	Killer WiFi 6	Killer WiFi 6
LAN	Dual Killer 2.5GLAN	Dual Killer 2.5GLAN
BLUETOOTH	5.2	5.2
DIMENSIONS	210mm x 203mm x 62.2mm (8.27in x 7.99in x 2.45in)	210mm x 203mm x 62.2mm (8.27in x 7.99in x 2.45in)

FOR HARDWARE
ENTHUSIASTS



VR
SERIES

BREAK FREE ACCELERATE YOUR CREATIVITY

THE ZOTAC VR GO BACKPACK PC IS DESIGNED FOR UNLOCKING THE POTENTIAL OF VR ACROSS INDUSTRIES AND BUSINESSES IN ENTERTAINMENT, PRODUCT DEVELOPMENT, MEDICAL PRACTICE, DESIGN, EDUCATION, CUSTOMER SERVICE, ESPORTS, AND MUCH MORE. INTEGRATING MOBILITY AND HIGH-PERFORMANCE HARDWARE, THE BACKPACK SOLUTION EMPOWERS LIFE-LIKE IMMERSION WITH ZERO COMPROMISES TO LATENCY AND REDUCTION IN VISUAL QUALITY WITH TODAY'S LEADING VR HEADSETS.

CONTINUOUS COMFORT

The VR GO backpack PC system is designed to be worn for continuous action with an even weight distribution, added foam padding on the back support and shoulder straps, and an extended length back support.

DEDICATED GRAPHICS

Immerse in incredible realism and performance with the powerful NVIDIA RTX™ graphics hardware.

POWERFUL PERFORMANCE

Take performance to the next-level with a powerful multi-threaded Intel® Core™ processor.

HOT-SWAPPABLE

Rechargeable and swappable external Li-ion batteries enable near limitless playtime.

POWER NOTIFICATIONS

See with easy visibility the power status of each battery and hear with precision when power is low.

IDENTIFICATION

With SPECTRA 2.0 RGB lighting, assign an individual's backpack or a team of backpacks a specific color for easy visual location and identification.

MORE THAN VR READY

Detach the VR GO system from the backpack accessory and use it as a standalone powerful system powered by batteries or connected to a wired power source.



ZOTAC VR GO 4.0 A4500

Creating and playing are all part of the fun with the all-new ZOTAC VR GO 4.0 A4500 Backpack PC. Experience full immersion in the virtual reality and Metaverse with unprecedented freedom of movement and the most reliable connectivity that no wireless VR device can provide. Strap the industry leading wearable

PC on your back and put on the latest Virtual Reality (VR), Augmented Reality (AR), or Mixed Reality (MR) headset* to create with an unparalleled sense of depth and proximity, simulate on-site training in the virtual, visualize and interact in brilliantly rendered architectural spaces, reimagine location experiences in arts and entertainment, and so much more.

SPECIFICATIONS

- Intel® Core™ i7-11800H processor
(8-core, 2.3 GHz, up to 4.6 GHz)
- NVIDIA RTX™ A4500 16GB GDDR6
- 16GB DDR4 Memory, 512GB M.2 SSD, Windows 11 Pro** pre-installed
- 2.5-inch SATA 6.0 Gbps HDD/SSD bay
- 1 x HDMI 2.1, 2 x DisplayPort 1.4
- 1 x USB 3.1 Type-C, 4 x USB 3.1, 2 x USB 3.0

- Gigabit Ethernet (RJ45), WiFi 6, Bluetooth 5.2
- SPECTRA 2.0 RGB Lighting
- Up to 50 minutes run time***

*Sold separately

**Europe regions have Microsoft Windows 11 Pro N

***Extendable run time with hot-swappable batteries.

Both batteries required for maximum performance



VIEW ALL
MODELS



MODEL	VR GO 4.0 A4500	VR GO 4.0 A2000
OS	Windows 11 Pro	Windows 11 Pro
CPU	Intel Core i7	Intel Core i7
GPU	NVIDIA RTX A4500	NVIDIA RTX A2000
MEMORY	Dual SO-DIMM DDR4	Dual SO-DIMM DDR4
STORAGE	1 x M.2 + 1 x 2.5" slot	1 x M.2 + 1 x 2.5" slot
HDMI	x 1	x 1
DISPLAYPORT	x 2	x 2
USB 3.1 TYPE-C	x 1	x 1
USB 3.1	x 4	x 4
USB 3.0	x 2	x 2
WIFI	WiFi 6	WiFi 6
LAN	Gigabit LAN	Gigabit LAN
BLUETOOTH	5.2	5.2
DIMENSIONS	347.5mm x 280.4mm x 87.1mm (13.68in x 11.04in x 3.43in)	347.5mm x 280.4mm x 87.1mm (13.68in x 11.04in x 3.43in)

BREAK FREE
ACCELERATE YOUR CREATIVITY



C
SERIES



POWERFUL SILENCE

**DESIGNED AND ENGINEERED TO BE FAN-LESS FOR
SILENT PERFORMANCE. THE POTENTIAL TO PERFORM,
THE RESILIENCE OF HARDWARE, AND ONE OF THE
SMALLEST OF FORM FACTOR OPEN UP A VASTNESS
OF OPPORTUNITY AND FLEXIBILITY WHERE ONLY THE
ZBOX C SERIES IS A SOLUTION.**

SILENT PERFORMANCE

Built for silent performance, the ZBOX C Series is wrapped in a pattern of one of nature's strongest natural structure, the honeycomb. With up to 90% of open ventilation, it enables maximum breathability for strong sustained performance.

NO MOVING PARTS

With a powerful fan-less cooling solution paired with a fast SSD*, it's a combination making for a powerful silent system, and with no moving parts, enables it to continue performing silently.

*barebone models do not come equipped with storage

NIMBLE PLACEMENT

Nimble versatility and mobility is provided by the designed VESA mounting compatibility built in. Place the system where you want. Lay it on the desk, hide it behind a display, or hang it on the wall.

EASY ACCESS

Loosen just four screws, which also double as feet for the system to allow airflow to move below the system, and remove the cover to get quick and easy access to upgrade storage and memory.



ZBOX CI671 NANO

The ZOTAC ZBOX C Series CI671 nano instills silence in ever more powerful computing hardware with an Intel Core Ultra 7 155U 12-core 14-thread processor, as well as smarter capabilities with an integrated Neural Processing Unit (NPU) to offload AI workloads for improved power and processing efficiencies. A compact 1.79 liter footprint and modern design with a

two-tone color scheme provide a timeless feel to captivate Offices and Workspaces with a silent and capable computer experience. With a bundled ZOTAC AI Express toolkit to leverage the Intel AI Boost NPU processor, users new to AI can explore its potential with an easy to use interface.

SPECIFICATIONS

- Compact 1.79 liter size
- Fanless, Passive Cooled design
- Silent Computing Performance
- Intel Core Ultra 7 155U processor
- Intel Graphics (integrated)
- Intel AI Boost
- ZOTAC AI Express toolkit
- Up to 64GB DDR5-5600/5200 SO-DIMM memory
- 1 x M.2 NVMe PCIe 4.0 x4 SSD slot (2280)
- 1 x M.2 NVMe PCIe 4.0 x4 / SATA SSD slot (2280)
- Triple Display ready with HDMI 2.1, 2 x DisplayPort 1.4
- Gigabit LAN, WiFi 6 connectivity, Bluetooth 5.2
- 5 x USB 3.2 (1 Type-C), 1 x USB 2.0
- VESA Mount ready
- Windows 11 ready



Windows 11





ZBOX EDGE CI343

The ZBOX edge CI343 features passive cooling in an ultra-thin design. The ZBOX edge CI343 is a robust, low-profile machine with no moving components, while maintaining a wide range of I/O connectivity. From edge computing, 4K multi-display

digital signage applications to every day computing needs, the ZBOX CI343 is a silent and capable operator.

SPECIFICATIONS

- Compact 0.70 liter design
- Thin low-profile 32.1mm / 1.26in height
- Silent Computing Performance
- Power efficient Intel Processor N100
- Up to 16GB DDR5-4800 SO-DIMM Memory
- 1 x M.2 NVMe PCIe 3.0 x4 / SATA SSD slot (2242/2280)
- Triple display ready with HDMI 2.0b, DisplayPort 1.4, and DP via USB-C
- Dual Gigabit LAN, WiFi 6 connectivity, and Bluetooth 5.2
- 3 x USB 3.1 ports (1 Type-C)
- VESA Mount ready
- Windows 11 ready



Windows 11





ZBOX CI337 NANO

The ZBOX CI337 nano features a power-efficient next-generation Intel N-Series processor to give you a silent experience in a compact PC. A robust, passive cooled design with no moving components brings high reliability and extended durability. The signature honeycomb vents throughout the chassis enhances exhaust flow, backed by a large aluminum

heatsink that maximizes heat transfer from the CPU to keep the system operating with continued performance.

SPECIFICATIONS

- Tiny 0.92 liter compact size
- Passively cooled silent computing performance
- Intel Processor N100 (Formerly Alder Lake-N)
- 1 x M.2 PCIe 3.0 x1 / SATA SSD slot (2242),
1 x 2.5-inch HDD/SSD bay
- Up to 16GB DDR5-4800 SO-DIMM memory support
- 4K@60 Hz ready, Triple display support with HDMI 2.0, DisplayPort 1.4 and DisplayPort via USB-C
- 4 x USB 3.2 ports (1 Type-C)
- Dual Gigabit Ethernet, Wi-Fi 6, and Bluetooth 5.2
- VESA Mount ready
- Windows 11 ready



Windows 11





MODEL	ZBOX CI671 nano	ZBOX CI651 nano
CPU	Intel Core Ultra 7 155U	Intel Core Ultra 5 125U
GPU	Intel Graphics	Intel Graphics
MEMORY	Dual SO-DIMM DDR5	Dual SO-DIMM DDR5
STORAGE	2 x M.2 slots	2 x M.2 slots
HDMI	x 1	x 1
DISPLAYPORT	x 2	x 2
THUNDERBOLT 4		
USB 3.2	x 5	x 5
USB 3.1		
USB 2.0	x 1	x 1
WIFI	WIFI 6	WIFI 6
LAN	Gigabit LAN	Gigabit LAN
BLUETOOTH	5.2	5.2
DIMENSIONS	204mm x 129mm x 68mm (8.03in x 5.08in x 2.68in)	204mm x 129mm x 68mm (8.03in x 5.08in x 2.68in)

POWERFUL
SILENCE



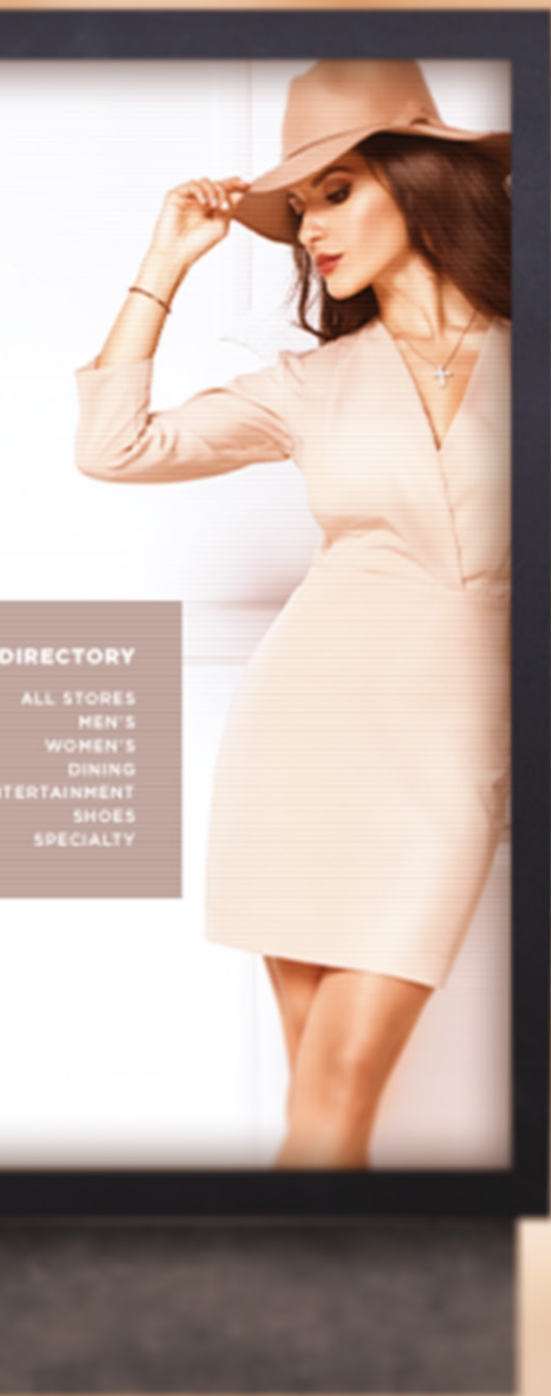
MODEL	ZBOX CI669 nano	ZBOX CI649 nano	ZBOX CI629 nano
CPU	Intel Core i7-1355U	Intel Core i5-1335U	Intel Core i3-1315U
GPU	Intel Iris Xe Graphics	Intel Iris Xe Graphics	Intel UHD Graphics
MEMORY	Dual SO-DIMM DDR5	Dual SO-DIMM DDR5	Dual SO-DIMM DDR5
STORAGE	1 x M.2 + 1 x 2.5" slot	1 x M.2 + 1 x 2.5" slot	1 x M.2 + 1 x 2.5" slot
HDMI	x 1	x 1	x 1
DISPLAYPORT	x 1	x 1	x 1
THUNDERBOLT 4	x 1	x 1	x 1
USB 3.1	x 4	x 4	x 4
USB 2.0	x 1	x 1	x 1
WIFI	WIFI 6	WIFI 6	WIFI 6
LAN	Gigabit LAN + 2.5GLAN	Gigabit LAN + 2.5GLAN	Gigabit LAN + 2.5GLAN
BLUETOOTH	5.2	5.2	5.2
DIMENSIONS	204mm x 129mm x 68mm (8.03in x 5.08in x 2.68in)	204mm x 129mm x 68mm (8.03in x 5.08in x 2.68in)	204mm x 129mm x 68mm (8.03in x 5.08in x 2.68in)

POWERFUL
SILENCE



MODEL	ZBOX CI337 nano	ZBOX edge CI343
CPU	Intel Processor N100	Intel Processor N100
GPU	Intel UHD Graphics	Intel UHD Graphics
MEMORY	1 x SODIMM DDR5	1 x SODIMM DDR5
STORAGE	1 x M.2 + 1 x 2.5" slot	1 x M.2
HDMI	x 2	x 1
DISPLAYPORT	x 1	x 1
USB 3.2 TYPE-C	x 1	
USB 3.2	x 3	
USB 3.1 TYPE-C		x 1
USB 3.1		x 2
WIFI	WiFi 6	WiFi 6
LAN	Dual GLAN	Dual GLAN
BLUETOOTH	5.2	5.2
DIMENSIONS	127.8mm x 126.8mm x 56.8mm (5.03in x 4.99in x 2.24in)	147.2mm x 147.2mm x 32.1mm (5.80in x 5.80in x 1.26in)

POWERFUL
SILENCE



DIRECTORY

- ALL STORES
- MEN'S
- WOMEN'S
- DINING
- ENTERTAINMENT
- SHOES
- SPECIALTY



SERIES

P SERIES

MINI MORE POSSIBILITIES

**HIGHLY ENERGY EFFICIENT, POWERFULLY SILENT,
AND AMAZINGLY POCKETABLE. WITH THE ZBOX P
SERIES, THE USABLE POSSIBILITIES SEEM ALMOST
ENDLESS.**

SMALL AS POSSIBLE

A computer as small as a portable storage device while still capable of running a full desktop Microsoft Windows OS. One of the many questions asked is “Where’s the computer?” and a regular reaction commonly received is “That’s a computer?” This is the ZBOX P Series line of Mini PC where P stands for pico, pocketable, power sipping, and sometimes impossible.

SILENT PERFORMANCE

Excluding the need for active cooling components, the systems are designed with a ribbed metal exterior allowing the shell to double as a heatsink, increasing the surface area to dissipate even more system heat.

EXTENDED LONGEVITY

With a fan-less cooling solution paired with onboard solid storage, it’s a combination making for an efficient silent system with no moving parts.

NIMBLE PLACEMENT

Nimble versatility and mobility is provided by the included bracket enabling mounting compatibility. Place the system where you want. Lay it on the desk, hide it behind a display, or hang it on the wall.

SMALL CARBON FOOTPRINT

With a power sipping energy efficiency, save more than just space and upfront costs.



ZBOX PICO PI430AJ WITH AIRJET

The ZBOX pico PI430AJ with AirJet is the world's first mini PC to incorporate Frore Systems' AirJet Solid State Active Cooling chip, which generates rapid airflow without fans. The more robust cooling hardware allows the PI430AJ to be equipped with more capable hardware such as an Intel Core i3 CPU, 8GB LPDDR5 fast memory, and a full-fledged M.2

NVMe SSD, all while impressively staying the size of a deck of playing cards.

SPECIFICATIONS

- The world's first Mini PC with a revolutionary solid-state active-cooling
- Compact 0.21 liter design
- Silent cooling performance
- Intel Core i3-N300 processor (8-core / 8-thread, 0.8GHz, up to 3.8 GHz)
- 8GB LPDDR5 onboard memory
- Intel UHD Graphics
- 1 x M.2 NVMe PCIe 3.0 x4 / SATA SSD slot (2230/2242/2280)
- Triple Display ready with HDMI 2.0, DisplayPort 1.4, DP via USB-C
- 3 x USB 3.2 ports (1 Type-C)
- Gigabit LAN, WiFi 6 connectivity, and Bluetooth 5.2
- VESA Mount ready
- Windows 11 ready



Windows 11



GOOD DESIGN
AWARD 2023





MODEL	ZBOX pico PI430AJ with AirJet
CPU	Intel Core i3-N300
GPU	Intel UHD Graphics
MEMORY	8GB LPDDR5 onboard
STORAGE	1 x M.2
HDMI	x 1
DISPLAYPORT	x 1
USB 3.2 TYPE-C	x 1
USB 3.2	x 2
WIFI	WiFi 6
LAN	Gigabit LAN
BLUETOOTH	5.2
DIMENSIONS	114.8mm x 76mm x 23.8mm (4.52in x 2.99in x 0.94in)

MINI
MORE POSSIBILITIES



SERIES

M SERIES

FUTURE FAST

**ZBOX M SERIES IS BUILT FOR SPEEDING
PERFORMANCE, NIMBLE VERSATILITY, AND
ENCOMPASSES FUTURE FAST TECHNOLOGIES INTO A
TINY PACKAGE OF MANY POSSIBILITIES.**

THE ALL-ROUNDER

Good for a single task, great at multi-functioning, and amazing for many needs. It's the home computer, the office workstation, the digital powerhouse behind the large single or multi-display digital billboard, the perfect thin client, the brains behind the casino or pinball machine, the living room entertainment, the server host, and the list of uses goes on and on.

SMALL AND SMALLER

Choose from multiple sized solutions that are all capable of powerful performance.

LAY IT, HIDE IT, HANG IT

Nimble versatility and mobility is provided by the designed VESA mounting compatibility built in or included stand accessory. Place the system where you want. Lay it on the desk, hide it behind a display, or hang it on the wall.

UPGRADEABLE

Easily get quick access to the internals to upgrade memory and storage with just the removal of a few screws.



ZBOX EDGE MI672

The ZBOX edge MI672 boasts an award winning design, and features an ultra-thin enclosure powered by an Intel Core Ultra 7 155H processor, more capable Intel Arc Graphics, and smarter capabilities with Intel AI Boost, an integrated Neural Processing Unit (NPU) to offload AI workloads for improved power and processing efficiencies. With efficient thermal design, power management, and plenty of open ventilation,

the ZBOX edge MI672 still maintains a remarkably low-profile design and a full set of I/O connectivity. An excellent gateway for efficient edge computing or everyday computing tasks in business, office, or home settings. With a bundled ZOTAC AI Express toolkit to leverage the Intel AI Boost NPU processor, users new to AI can explore its potential with an easy to use interface.

SPECIFICATIONS

- Compact 0.64 liter design
- Thin low-profile 28.5mm / 1.12in height
- Intel Core Ultra 7 155H processor
(16-core / 22-thread, 2.5 GHz, up to 4.8 GHz)
- Intel Arc Graphics
- Intel AI Boost
- ZOTAC AI Express toolkit
- Up to 64GB DDR5-5600/5200 SO-DIMM Memory
- 1 x M.2 NVMe PCIe 4.0 x4 SSD slot (2230/2242)
- 1 x M.2 NVMe PCIe 4.0 x4 / SATA SSD slot (2280)
- Dual display ready with HDMI 2.1, DisplayPort 1.4
- Gigabit LAN, WiFi 6 connectivity, and Bluetooth 5.2
- 6 x USB 3.2 ports (1 Type-C)
- VESA Mount ready
- Windows 11 ready



reddot winner 2020



VIEW ALL
MODELS



MODEL	ZBOX edge MA762	ZBOX edge MI672	ZBOX edge MI652
CPU	AMD Ryzen 7 7840HS	Intel Core Ultra 7 155H	Intel Core Ultra 5 125H
GPU	AMD Radeon 780M Graphics	Intel Arc Graphics	Intel Arc Graphics
MEMORY	Dual SO-DIMM DDR5	Dual SO-DIMM DDR5	Dual SO-DIMM DDR5
STORAGE	1 x M.2 slot	2 x M.2 slots	2 x M.2 slots
HDMI	x 1	x 1	x 1
DISPLAYPORT	x 1	x 1	x 1
THUNDERBOLT 4			
USB4	x 1		
USB 3.2	x 3	x 6	x 6
USB 3.1			
WIFI	WIFI 6E	WIFI 6	WIFI 6
LAN	Dual Gigabit LAN	Gigabit LAN	Gigabit LAN
BLUETOOTH	5.2	5.2	5.2
DIMENSIONS	149.5mm x 149.5mm x 28.5mm 5.89in x 5.89in x 1.12in	149.5mm x 149.5mm x 28.5mm 5.89in x 5.89in x 1.12in	149.5mm x 149.5mm x 28.5mm 5.89in x 5.89in x 1.12in



MODEL	ZBOX edge MI668	ZBOX edge MI648
CPU	Intel Core i7-1360P	Intel Core i5-1340P
GPU	Intel Iris Xe Graphics	Intel Iris Xe Graphics
MEMORY	Dual SO-DIMM DDR5	Dual SO-DIMM DDR5
STORAGE	2 x M.2	2 x M.2
HDMI	x 1	x 1
DISPLAYPORT	x 1	x 1
THUNDERBOLT 4	x 1	x 1
USB 3.1	x 3	x 3
WIFI	WiFi 6	WiFi 6
LAN	Dual Gigabit LAN	Dual Gigabit LAN
BLUETOOTH	5.2	5.2
DIMENSIONS	149.5mm x 149.5mm x 28.5mm (5.89in x 5.89in x 1.12in)	149.5mm x 149.5mm x 28.5mm (5.89in x 5.89in x 1.12in)



SERIES



ACCELERATE WITH AI

ZBOX Q SERIES PROVIDES WORKSTATION CAPABILITIES, INTEGRATING PURE COMPUTATIONAL POWER INTO AN ULTRA-SMALL FORM FACTOR THAT RESONATE BIG AND POWERFUL.

NVIDIA RTX PROFESSIONAL GPUs

NVIDIA RTX™ professional laptop GPUs fuse speed, portability, large memory capacity, enterprise-grade reliability, and the latest RTX technology—including real-time ray tracing, advanced graphics, and accelerated AI.

ROBUST CONNECTIVITY

Connect as fast as possible. Featuring up to WiFi 6 connectivity, Dual 2.5Gbps LAN wired connectivity, UHS-II SDXC card reader, and Thunderbolt 4 for blazing data transfers of up to 40Gbps.

NEXT-LEVEL PERFORMANCE

With up to a 13th Gen Intel Core i7-13700HX processor with up to 16-cores and 24-threads, the ZBOX Q Series is designed to deliver blistering computing performance.



ZBOX QRP7N3500

The new ZOTAC ZBOX Q Series Mini PC accelerates creative and professional workflows. Featuring an NVIDIA RTX 3500 GPU based on the powerful Ada Lovelace architecture and 13th Gen Intel Core i7 CPU, this mini but mighty workstation system integrates powerful technologies into an ultra-small

form factor design and provides unrivaled performance and power efficiency for industrial or deployment scenarios.

SPECIFICATIONS

- NVIDIA RTX 3500 12GB GDDR6 Ada Generation Laptop GPU
- Compact 2.65 liter design
- Low-profile 62.2mm / 2.45in height
- Intel Core i7-13700HX processor
(16-core / 24-thread, 2.1 GHz, up to 5.0 GHz)
- Up to 64GB DDR5-4800 SO-DIMM Memory
- 1 x M.2 NVMe PCIe 4.0 x4 SSD slot (2230/2242/2280/22110)
- 1 x M.2 NVMe PCIe 4.0 x4 / SATA SSD slot
(2230/2242/2280/22110)
- Quad display ready with 2 x HDMI 2.1, 2 x DisplayPort 1.4
- Dual 2.5Gbps LAN, WiFi 6 connectivity, and Bluetooth 5.2
- 5 x USB 3.1 ports
- Windows 11 ready



VIEW ALL
MODELS



MODEL	ZBOX QRP7N3500	ZBOX QRP7N2000	ZBOX QTG7A4500
CPU	Intel Core i7-13700HX	Intel Core i7-13700HX	Intel Core i7-11800H
GPU	NVIDIA RTX 3500 Ada Gen	NVIDIA RTX 2000 Ada Gen	NVIDIA RTX A4500
MEMORY	Dual SO-DIMM DDR5	Dual SO-DIMM DDR5	Dual SO-DIMM DDR4
STORAGE	2 x M.2	2 x M.2	2 x M.2 + 1 x 2.5" slot
HDMI	x 2	x 1	x 2
DISPLAYPORT	x 2	x 2	x2
THUNDERBOLT 4	x 1	x 1	x 1
USB 3.1	x 5	x 5	x 5
WIFI	WiFi 6	WiFi 6	WiFi 6
LAN	Dual 2.5GLAN	Dual 2.5GLAN	Dual 2.5GLAN
BLUETOOTH	5.2	5.2	5
DIMENSIONS	210mm x 203mm x 62.2mm (8.27in x 7.99in x 2.45in)	210mm x 203mm x 62.2mm (8.27in x 7.99in x 2.45in)	210mm x 203mm x 62.2mm (8.27in x 7.99in x 2.45in)

PEERLESS INNOVATION,
LIMITLESS CREATION



H
SERIES

FOR MEDICAL AND HEALTHCARE SOLUTIONS
- HEALTHCARE SERIES



FOR MEDICAL AND HEALTHCARE SOLUTIONS

THE ZBOX HEALTHCARE SERIES ARE SYSTEMS DESIGNED TO FACILITATE THE NEEDS OF MEDICAL AND HEALTHCARE FACILITIES OF TODAY AND ENABLE SMARTER, MORE POWERFUL CAPABILITIES TO MEET THE DEMANDS OF FUTURE APPLICATIONS. FEATURING A SUBTLE COMPACT DESIGN WITH ROUNDED EDGES, WHITE EXTERIOR, COMPLIANCE TO EN60601-1 MEDICAL ELECTRICAL EQUIPMENT CERTIFICATIONS, AND EQUIPPED WITH A POWERFUL 13TH GEN INTEL CORE PROCESSOR AND DISCRETE PROFESSIONAL-GRADE NVIDIA RTX ADA GENERATION GPU FOR DEMANDING MEDICAL APPLICATIONS SUCH AS DEPLOYING AI DIAGNOSTIC ALGORITHMS, MEDICAL IMAGING, RENDERING, 3D SLICING, AND MORE.

EN60601-1 COMPLIANT

IEC 60601-1 is a technical standard that medical electrical equipment and devices must meet to be considered safe and effective before they go to market. It's required for FDA approval, and devices must meet the standard to be sold in various markets.

ACCELERATED BY NVIDIA RTX

With a powerful embedded professional grade GPU inside each ZBOX Healthcare Series Mini PC, the NVIDIA RTX Ada Generation GPUs are capable of graphical and AI workloads like never before, making it the prime candidate for 3D image slicing, medical imaging, as well as running cutting-edge AI diagnostic algorithms and surgical implementations, and much more.

ALL-WHITE DESIGN

The all-white chassis of ZBOX Healthcare Series models are designed to be placed within a Healthcare context. Whether it is in a clinic, hospital, or embedded into healthcare equipment, it will look the part.

DESIGNED FOR SAFETY

Made with strong metal, the exterior shell is more durable and features rounded edges to reduce accidental injuries from impact.



ZBOX H39R5000W

The ZBOX H39R5000W is a mini PC designed to facilitate the needs of medical and healthcare facilities of today and enable smarter, more powerful capabilities to meet the demands of future applications. Featuring a subtle compact design with rounded edges, white exterior, compliance to EN60601-1 medical electrical equipment certifications, and equipped with

a powerful 13th gen Intel Core i9 processor and discrete professional-grade NVIDIA RTX 5000 Ada Generation GPU for demanding medical applications such as deploying AI diagnostic algorithms, medical imaging, rendering, 3D slicing, and more.

SPECIFICATIONS

- EN60601-1 compliant
- NVIDIA RTX 5000 Ada Generation Laptop GPU 16GB GDDR6 256-bit
- Intel Core i9-13900HX processor (24-core / 32-thread, up to 5.4 GHz)
- Compact 2.86 liter design
- Low-profile 67.5mm / 2.66in height
- Durable metal exterior with wall mountable design and rounded edges
- Up to 64GB DDR5-5600 SO-DIMM Memory
- 1 x M.2 NVMe PCIe 4.0 x4 SSD slot (2230/2242/2280/22110)
- 1 x M.2 NVMe PCIe 4.0 x4 / SATA SSD slot (2230/2242/2280/22110)
- Quad display ready with 2 x HDMI 2.1, 2 x DisplayPort 1.4
- Dual 2.5Gbps LAN, WiFi 6 connectivity, and Bluetooth 5.2
- 1 x Thunderbolt 4, 5 x USB 3.2 ports
- Windows 11 ready





MODEL	ZBOX H39R5000W	ZBOX H37R3500W
CPU	Intel Core i9-13900HX	Intel Core i7-13700HX
GPU	NVIDIA RTX 5000 Ada Gen	NVIDIA RTX 3500 Ada Gen
MEMORY	Dual SO-DIMM DDR5	Dual SO-DIMM DDR5
STORAGE	2 x M.2	2 x M.2
HDMI	x 2	x 2
DISPLAYPORT	x 2	x 2
THUNDERBOLT 4	x 1	x 1
USB 3.2	x 5	x 5
WIFI	WiFi 6	WiFi 6
LAN	Dual 2.5GLAN	Dual 2.5GLAN
BLUETOOTH	5.2	5.2
DIMENSIONS	209.8mm x 202.3mm x 67.5mm 8.25in x 7.96in x 2.66in	209.8mm x 202.3mm x 67.5mm 8.25in x 7.96in x 2.66in

COMPARE

ZBOX SERIES

	VR SERIES	Q SERIES	H SERIES	E SERIES	M SERIES	C SERIES	P SERIES
4K	◆	◆	◆	◆	◆	◆	◆
DISCRETE GRAPHICS	◆	◆	◆	◆			
VR READY	◆	◆*	◆	◆*			
FANLESS						◆	◆*
M.2 SSD SUPPORT	◆	◆	◆	◆	◆*	◆*	◆*
2.5-INCH STORAGE BAY	◆	◆*		◆*	◆*	◆*	
THUNDERBOLT 4		◆*	◆	◆*	◆*	◆*	
THUNDERBOLT 3		◆*			◆*		
USB4					◆*		
USB 3.2			◆		◆*	◆*	
USB 3.1	◆	◆		◆	◆	◆	◆
HDMI	◆	◆	◆	◆	◆	◆	◆
DISPLAYPORT	◆	◆	◆	◆	◆	◆	◆
MOUNTABLE			◆		◆	◆	◆
POWER RECOVERY	◆	◆	◆	◆	◆	◆	◆
SD/SDHC/SDXC CARD READER	◆	◆	◆	◆	◆*	◆*	
MICRO SD/SDHC/SDXC CARD READER					◆*	◆*	◆*
LAN PORT	◆	◆	◆	◆	◆	◆	◆
DUAL LAN		◆	◆	◆	◆*	◆*	
WIFI	◆	◆	◆	◆	◆	◆	◆
BLUETOOTH	◆	◆	◆	◆	◆	◆	◆

*SELECT MODELS

CHOOSE YOUR OWN ZBOX

CHOOSE
YOUR
OWN
ZBOX



BAREBONE

FOR THE D.I.Y USERS

With our barebones ZBOX Mini PCs, install memory and storage you need and your desired OS. Make it YOUR OWN ZBOX Mini PC.

WINDOWS

THE COMPLETE SYSTEM

Select ZBOX Mini PCs come pre-installed with memory, storage, and operating system. Simply connect your keyboard, mouse, and display of your choice and power on the system. You'll be ready to go within minutes.

AWARDS



Good Design Award 2023

ZBOX pico PI430AJ with AirJet



COMPUTEX d&i Special awards 2021

ZBOX MAGNUS ONE



reddot winner 2021

Red Dot Design Award 2021

ZBOX MAGNUS ONE



reddot winner 2020

Red Dot Design Award 2020

ZBOX M Series edge



iF Design Award 2019

ZOTAC VR GO 2.0



COMPUTEX d&i awards 2018

ZBOX CI660 nano

ZOTAC VR GO 2.0



iF Design Award 2018

ZBOX PI225 pico



European Hardware Awards 2017

ZBOX MAGNUS EN1060



COMPUTEX d&i awards 2017

ZOTAC VR GO



COMPUTEX d&i awards 2016

ZBOX PI221 pico

ZBOX MI545 nano

MEDIA REVIEWS

"The ZBOX nano has a high build quality and surprisingly good performance."

PC Perspective

"Small powerhouse! When it comes to small PCs, ZOTAC is well known to many."

NOTEBOOKCHECK

"ZOTAC's small-form-factor machine gets plenty right, starting with its diminutive size and sensible design – it's small enough to fit into tiny spaces, and the included stand and VESA mount add versatility."

Techradar

"ZOTAC may be known for their graphics cards and we've found them to be quite the performers here on the site, but they're also pretty big on the small form factor PCs as well."

Wccftech

"A true example of 'good things come in small packages.'"

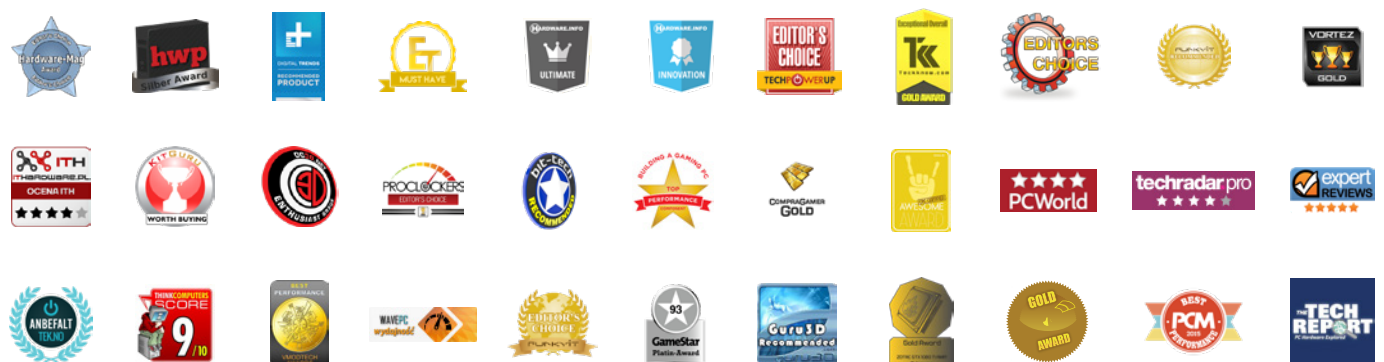
XSReviews

"ZOTAC definitely has my attention now, and I'm fascinated to see how this march of the mini-PC progresses."

Forbes

"It could easily hold on its own against desktop AIOs and even powerful gaming notebooks."

Hardwarezone



INNOVATING THE PC IN EVERY BEST MINI WAY

If you need more information or have question about our product, please write to marketing@zotac.com

FACEBOOK /ZOTAC

X /ZOTAC

INSTAGRAM /ZOTAC_OFFICIAL

YOUTUBE /ZOTAC_OFFICIAL

VIMEO /ZOTAC

ZOTAC.COM

@ ZOTAC TECHNOLOGY LIMITED. ALL RIGHTS RESERVED.



- ZOTAC reserves the right to change the terms and conditions without advance notice.
- Images shown are for illustrative purposes only and may differ from the actual product. All features, functionality and other product specifications are subject to change without notice or obligation.
- The terms HDMI, HDMI High-Definition Multimedia Interface, HDMI Trade dress and the HDMI Logos are trademarks or registered trademarks of HDMI Licensing Administrator, Inc.